

**Product Range
International
2013**

**Double Containment System
CONTAIN-IT Plus
metric**



More than 50 Years of Application Know How



Our long experience in plastic piping systems applications is also for your security. Approvals and third party controls are guarantee for continuously

high quality. Many of our products have the necessary approvals of the relevant institutes and thanks to the batch identification they are traceable.

Fields of applications

Our specialists are proving their wide material knowledge and their application experience day by day in various industries:

- Water treatment
- Galvanics
- Automotive industry
- Cellulose and paper industry
- Textile industry
- Museums/Archives
- Waste water technical asset, with pollutant ingredients
- Waste water systems in water protection areas
- Battery production
- Chemical industry
- Semiconductor industrie/printed circuit board production
- Waste water treatment/waste combustion
- Generating plant
- Metal processing/betterment
- Disposal drainage
- Life Science

Do you miss your application in the above list? No problem. Please call us, and we will find a solution according to your specifications.

Quality Products with Advantages



Advantage of Wide Product Ranges

Fittings
Hand Operated Valves
Pipes
Joining Systems
Actuated Valves
Measure and Control Technology
Machines and Tools
available in ISO/DIN



Advantage of Quality

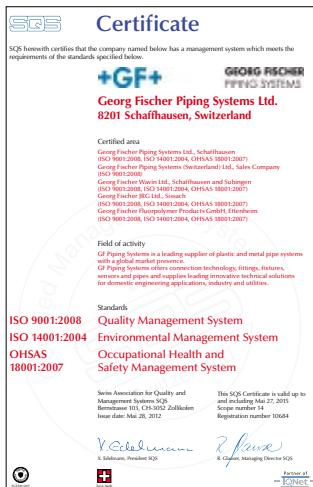
Compound
Our own compound and strict quality controls for each raw material delivery form the basis for GF Piping Systems high quality products.

Production Know-How
Due to know-how gathered over 50 years we are able to produce our products to exceptionally high tolerances.



Advantage of Ecology

In the line with the ISO 14001 certification the environmental risks get systematically analysed and if necessary arrangements get discharged to minimise them. Modern large concerns demand analysis of the deliverers and GF Piping Systems supports that actively. Most of our companies are already successfully certificated or the process of certification is in progress.



Quality management system certified according to ISO 9001/ISO 14001 and OHSAS 18001



Advantage of Production Quality Control Tests

The double containment system consists of standard single components, which come under different component scrutiny.

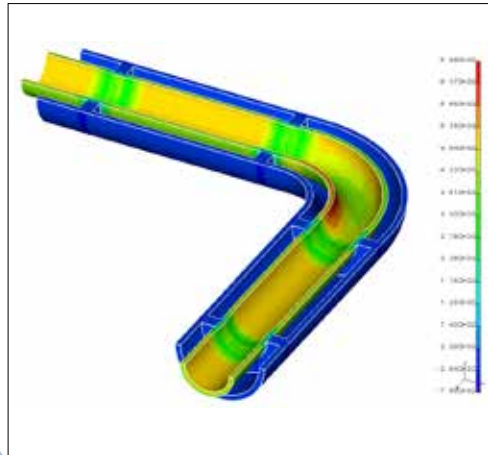
- Pressure Pulsation Testing 100 h Test
- Chemical Resistance
- Functions
- Temperature Cycling Test
- Cyclic Bending Test

Accredited laboratory for components of plastic piping systems according to SN EN ISO 45001

for Professional Users

Advantage in Planning

Many customers prefer to purchase the complete piping system from one supplier. Because only systems that are designed to complement each other guarantee easy planning, installing and efficient functioning of the piping system. The calculation of the piping system will be made with the most modern calculation program.



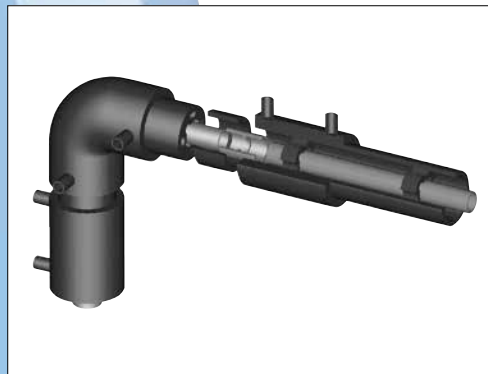
Advantage of Choosing the Right Material

For maximum safety and optimal durability of a piping system the choice of raw material and pressure class of the pipe parts is highly important. The raw material's suitability to the medium can be checked with the help of our chemical resistance list.



Advantage of Jointing Technology

The patented Double Containment jointing technology enables to connect the double pipeline to be joined similarly to a single pipeline with stringent adherence to DVS guidelines. Thereby "blind fusions" are avoided. This kind of connection allows a pressure control on the inner pipe.



Advantage of Support

Training
GF Piping Systems offers training possibilities at our regional sales companies, in our own training center in Schaffhausen or at your premises.

Worldwide Distribution
Sales companies, representatives and dealers from GF Piping Systems can supply you with complete technical advice, punctual distribution and fast service in almost every corner of the world.



Double Containment System – Contain-IT Plus

Hazardous media leaking from a piping system could cause damage to people, the environment or to machinery.

Therefore, double containment piping systems from Georg Fischer are excellent for safely transporting hazardous media.

Georg Fischer offers PVC-U, PVC-C, PP-H, PE and PVDF for the inner pipe, allowing for an optimal pipe material selection.

The outer pipe is available in either PE100 or PVC-U (transparent or grey).

To connect the PE100 pipe with the double containment fitting, ELGEF Plus electrofusion couplers have to be used. To connect the PVC-U pipe and the double containment fitting, EPDM couplers have to be used.

The following criteria are important for a safe process:

Separate joints of inner and outer pipe, guaranteeing a visible control of each fusion or cement joint according to DVS fusion regulations and KRV cementing guidelines.

The inner pipe can be pressure tested before connecting the outer pipe. This means that any leakage from the inner pipe would immediately be visible.

By using termination fittings the outer pipe can be partitioned into leak containment sections, facilitating leak detection.

Optimised diameter difference between inner and outer pipe. This means smaller outer pipe, smaller ELGEF Plus coupler, smaller pipe clips, less space needed, less jointing and installation time.

The inner pipe is pushed into the outer pipe after the spacers have been clamped onto the inner pipe. This means that there is no prefabricated double containment pipe, and the inner pipe can also be used as single pipe.

For most fusion joints standard fusion machines from Georg Fischer can be used.

Comparatively easy installation in difficult areas, such as shafts and along ceilings, by using cement jointing of PVC-U inner piping.

Georg Fischer recommends restrained installation. Therefore, Georg Fischer can calculate the resulting forces and tension, if required. These values are important for determining the correct locations for the fixing points. The fixing points for the inner pipe are given by the spacers in each double containment fitting. The working conditions, such as working pressure, working temperature and medium transported have to be documented in the "Questionnaire for Static Evidence of Secondary Containment Systems". Should the calculated tensions for a specific process be too high, the process parameters would have to be changed.

Calculation chart

Calculation of socket equal / snap ring / ELGEF Plus electrofusion socket or EPDM couplers

Needed number of pieces → /per	Socket equal	Snap ring	ELGEF Plus electrofusion socket for pressure-resistant outer pipe	EPDM rubber coupler for splash proof
Socket fusion/Solvent				
Elbow 90°	1	2	2	2
Elbow 45°	1	2	2	2
T 90°	2	3	3	3
Endfitting	0 (1**)	1 (2**)	1 (2**)	1 (2**)
Butt fusion				
Elbow 90°	0	2	2	2
Elbow 45°	0	2	2	2
T 90°	0	3	3	3
Endfitting	0 (1**)	1 (2**)	1 (2**)	1 (2**)
Inner pipe	*	0	0	0
Outer pipe	0	0	*	*

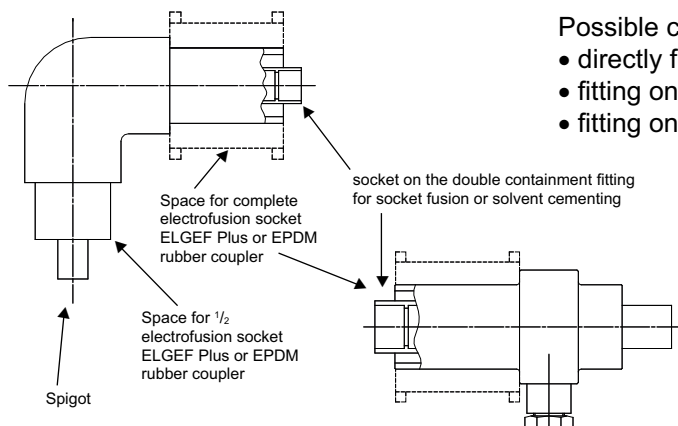
* 1 piece per manufactured pipe

** for segmentation of pipeline into leak detection sections

Fitting types for solvent cementing and socket fusion

Fitting type: CONTAIN-IT Plus

Solvent cementing and socket fusion



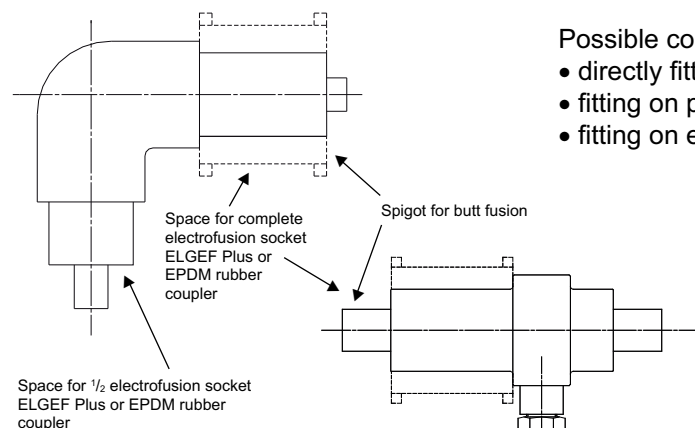
Possible connection:

- directly fitting on fitting
- fitting on pipe intermediate piece
- fitting on endfitting

Fitting types for butt fusion

Fitting type: CONTAIN-IT Plus

Butt fusion



Possible connection:

- directly fitting on fitting
- fitting on pipe intermediate piece
- fitting on endfitting

Questionnaire for Static Evidence of Secondary Containment Systems

General project information	
Project / Object = File name	_____
Order placed by / Customer	_____
Bid / Order number	_____

Materials selection for outer pipe*	PE 80	PE 100	PVC-U
	<input type="checkbox"/>	<input type="checkbox"/>	<input type="checkbox"/>

Leak detection information Type of monitoring*	optical	N ₂	Cable	Other
	<input type="checkbox"/>	<input type="checkbox"/>	<input type="checkbox"/>	
Overpressure difference [bar]				
Underpressure [mbar]				
No pressure*	<input type="checkbox"/>			

Additional system data*	Installation location 1		Installation location 2	
	Above ground <input type="checkbox"/>	In the ground <input type="checkbox"/>	In buildings <input type="checkbox"/>	Outdoors <input type="checkbox"/>
Time period for temperature change:	_____		_____	
Ambient temperature:	Max. _____ Min. _____	Max. _____ Min. _____		
Installation temperature:	Max. _____ Min. _____	Max. _____ Min. _____		

Selection of Secondary Containment components				
Type of fittings required*	<input type="checkbox"/> 90° elbow	<input type="checkbox"/> 45° elbow	<input type="checkbox"/> T-equal	<input type="checkbox"/> T-red
Inner pipe:			Outer pipe:	
Material	_____		Material	
Nominal diameter	DN	_____	Nominal diameter	DN
Outer diameter	d	_____	Outer diameter	d
Wall thickness	e	_____	Wall thickness	e
Nominal pressure rating	PN	_____	Nominal pressure rating	PN
Standard dimension ratio	SDR	_____	Standard dimension ratio	SDR

Joining technology	BF	SF	IR	CT	EF	EC	BF = Butt fusion IR = Infrared EF = Electrofusion	SF = Socket fusion CT = Cementing EC = EPDM coupler
	Inner pipe*	<input type="checkbox"/>	<input type="checkbox"/>	<input type="checkbox"/>	<input type="checkbox"/>			
Outer pipe*					<input type="checkbox"/>	<input type="checkbox"/>		

Operating Conditions	
Flow media / Concentration	_____ Density: _____ g/cm ³
Maximum working temperature _____ °C	In percent _____ %
Minimum working temperature _____ °C	In percent _____ %
Maximum working pressure _____ bar	In percent _____ %
Minimum working pressure _____ bar	In percent _____ %
Required service life * (years)	10 <input type="checkbox"/> 25 <input type="checkbox"/> 50 <input type="checkbox"/>

* Please mark if applicable

CONTAIN-IT Plus

References



CONTAIN-IT Plus – Special Parts

We have kept the contain-It Plus range deliberately slim; to complement this, we have on offer a large range of special parts made to order for customer specific requirements.



Valves

Ball valve to d63/110 mm as part of the standard products range, larger dimensions as well as diaphragm and ball check valves available as special parts.



Tees

Tee 90° equal as part of the standard products range, reduced Tees and Tees 45° available as special parts.



Assembly groups / Sections

Special parts are available for cramped condition applications or as bespoke solutions with premanufactured combinations of fittings and reduced lengths.



Fittings

Elbows 90° and 45° are part of the standard products range, elbows with differing angles (e.g. 15° or 30°) are available as special parts. Reductions and dimension converters are available as special parts. Fittings can also be manufactured as termination fittings.

Overview Product Range

Dimension d x D	Inner pipe										
	Solvent cementing				Socket fusion			Butt-/IR-fusion			
	PVC-U Tangjit	PVC-U Dytex	PVC-C Tangjit	PVC-C Dytex	PP-H	PE 80	PVDF Standard	PP-H ISO S5 SDR 11	PE 100 ISO S5 SDR 11	PVDF Standard PN 16	PVDF Standard PN 10
20 x 50	▲	▲	▲	▲	▲	▲	▲	☀	☀	☀	
25 x 50	▲	▲	▲	▲	▲	▲	▲	☀	☀	☀	
32 x 63	▲	▲	▲	▲	▲	▲	▲	☀	☀	☀	
40 x 75	▲	▲	▲	▲	▲	▲	▲	▲	▲	▲	
50 x 90	▲	▲	▲	▲	▲	▲	▲	▲	▲	▲	
63 x 110	▲	▲	▲	▲	▲	▲	▲	☀	☀	☀	
75 x 125	▲	▲	▲	▲	▲	▲		☀	☀	☀	
90 x 140	▲	▲	▲	▲	▲	▲		☀	☀	☀	
110 x 160	▲	▲	▲	▲	▲	▲		☀	☀	☀	
125 x 180	▲							▲	▲		▲
140 x 200	▲							▲	▲		▲
160 x 225	▲							▲	▲		▲
200 x 280	▲							▲	▲		▲
225 x 315	▲							▲	▲		▲

☀ = Butt- and Infrared-(IR-Plus®) compatible

The designation «Nominal Pressure» (PN) on its own is not sufficient any more!

The PN classification generally used all over the world is confusing where butt fusion is concerned. In the case of thermoplastic piping systems the established practice is to use pressure-neutral descriptions for pipes and fittings of the same pressure capacity. This should eliminate the wrong selection of piping components for different applications or working conditions.

According to ISO 4065 pipes are classified into series (S), whereby pipes of the same series allow for the same working pressure, as is also the case with the nominal pressure levels. The series are denoted by the letter S. S is a dimensionless quantity.

As an example, for 110 x 10 mm PP pipe:
 $S = 5 = (110-10) / (2 * 10)$

Furthermore, SDR (Standard Dimension Ration) is also used. SDR is the ratio between the pipe outside diameter (d) and the pipe wall thickness (e).

$$SDR = \frac{d}{e}$$

Series and SDR are connected by the formula:

$$SDR = 2 * S + 1$$

In the case of the example above:

$$SDR = 110/10 = 11 = 2 * 5 + 1$$

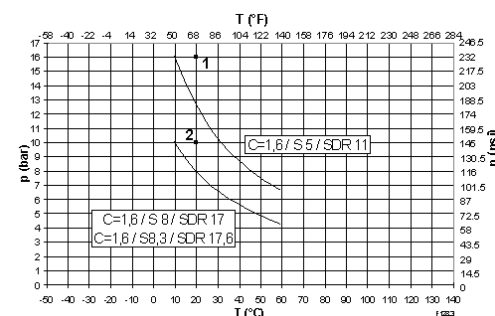
All three designations, PN, S and SDR are currently used by the market. Therefore, we recommend always giving the pipe dimension, wall thickness, as well as the pipe series S or SDR.

The following pressure-temperature-diagrams are based on an operating life of 25 years.

Safety factors at variance with these and modified operational lifetime necessitate separate calculations.

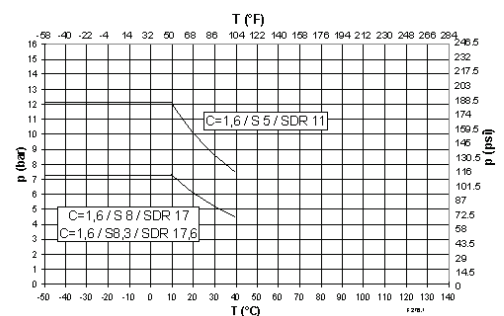
Pressure/Temperature Diagram

Application Limits of Pipes and Fittings made of PE100 (Eltex TUB121[®], CRP 100[®])
 (25 years operation with design-factor = 1,6 or 1,25 incorporated; water or similar media)



- 1 Design Factor C=1,25 / S 5 / SDR 11 for 20 °C water / 50 years
- 2 Design Factor C=1,25 / S 8,3 / SDR 17,6 and S 8 / SDR 17 for 20 °C water / 50 years
- T Temperature in °C / °F
- p permissible pressure in bar / psi

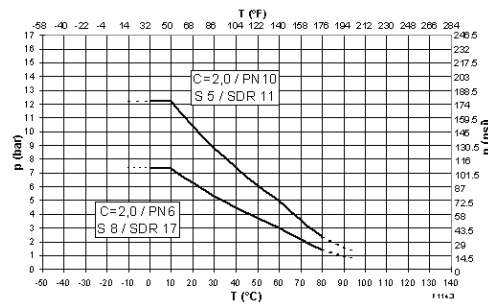
Application Limits of Pipes and Fittings made of PE80
 (25 years operation with design-factor = 1,6)



- P permissible pressure in bar / psi
- T Temperature in °C / °F

Application Limits of Pipes and Fittings made of PP-H

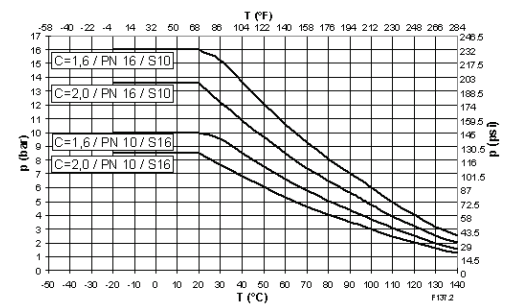
(25 years operation with design-factor = 2,0 incorporated; water or similar media)



T Temperature in °C / °F
p permissible pressure in bar / psi

Application Limits of Pipes and Fittings made of PVDF

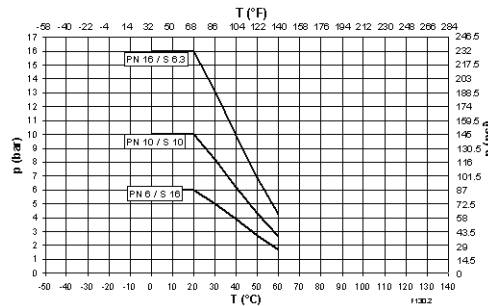
(water or similar media)



T Temperature in °C / °F
p permissible pressure in bar / psi

Application Limits of Pipes and Fittings made of PVC-U

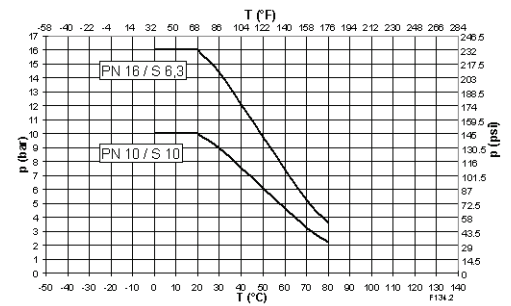
(25 years operation with design-factor = 2,5 incorporated; water or similar media)



T Temperature in °C / °F
p permissible pressure in bar / psi

Application limits of pipes and fittings made of PVC-C

(25 years operation with design-factor incorporated; water or similar media)



T Temperature in °C / °F
p permissible pressure in bar / psi

The pressure-temperature-diagrams mentioned above for pipes and fittings are designed to have a useful life of 25 years. Digressing design factors or a changed useful life make an individual calculation necessary.

List of abbreviations

ANSI	American National Standard Institute	DN	Nominal diameter
ASTM	American Society for Testing and Materials	PN	Nominal pressure
BS	British Standard	kg	Weight in kilograms
DIN	Deutsche Industrie Normen	g	Weight in grams
ISO	International Standardization Organisation	SP	Standard pack. The figure given indicates the quantity fittings contained in a standard pack
ABS	Acrylonitrile-Butadien-Styrene	GP	Gross pack. The figure given indicates the quantity of fittings contained in a gross pack
PVC-U	Polyvinyl Chloride	G	Pipe thread
PVC-C	Polyvinyl Chloride chlorinated	NPT	Taper male thread pressure tight in the thread to ANSI B 1.20.1
PP	Polypropylene, heat stabilised	R	Taper male thread, pressure tight in the thread to ISO 7/DIN 2999/1
PE	Polyethylene	Rc	Taper female thread, pressure tight in the thread to ISO 7/1
PVDF	Polyvinylidene fluoride	Rp	Parallel female thread, pressure tight in the thread to ISO 7/DIN 2999/1
EPDM	Ethylene-Propylene-Rubber	Tr	Trapezoid thread
FPM	Fluoric-Rubber e.g. Viton®	SC	Size of hexagon bolts
NBR	Nitrile-Rubber	s	A/F
PTFE	Polytetrafluorethylene, e.g. Teflon®	e	Wall thickness
PBTP	Polybutylene terephthalate	AL	Number of bolt holes
UP-GF	Unsaturated polyester resin glassfibre reinforced	®	Registered trade-mark
St	Steel		
d	Pipe outside diameter		
HD	Heated tool socket fusion		
HS	Heated tool butt fusion		
SDR	Wall thickness relation		
S	Pipe category		
SM	Fusion method		

CONTAIN-IT Plus

		Page
	Outer pipe and accessories for all inner pipes	9
	Leak detection	18
	PVC-U/PE100 Connection of inner pipe by solvent cementing	20
	Inner pipe and connection elements PVC-U	26
	PVC-C/PE100 Connection of inner pipe by solvent cementing	28
	Inner pipe and connection elements PVC-C	32
	PP-H/PE100 Connection of inner pipe by socket fusion	34
	Fitting PP-H/PE100 Connection of inner pipe by butt fusion	37
	Inner pipe and connection elements PP-H	40
	PE/PE100 Connection of inner pipe by socket fusion	43
	PE/PE100 Connection of inner pipe by butt fusion	47
	Inner pipe and connection elements PE	51
	PVDF/PE100 Connection of inner pipe by socket fusion	55



PVDF/PE100
Connection of inner pipe by butt fusion

57



Inner pipe and connection elements PVDF

60



PFA/PE100

63



Pneumatic rotary actuators PA

65



Welding tools

68



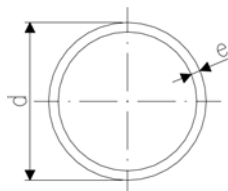
Solvent Cements

73

CONTAIN-IT Plus

Outer pipe and accessories for all inner pipes

Containment pipe PE100 S5/SDR11

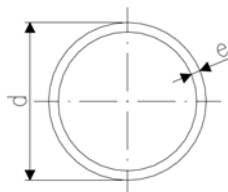


Model:

- Material: PE 100, Polyethylene
- Colour: RAL 9011 graphite black
- Dimension: DIN 8074
- Pipe length: 5m, with plain ends

d [mm]	PN	Code	CFM	kg	e [mm]
50	16	193 017 160	253 98 71	0.673	4,6
63	16	193 017 161	253 98 72	1.060	5,8
75	16	193 017 162	253 98 73	1.480	6,8

Containment pipes, PE100 S8/SDR17,8

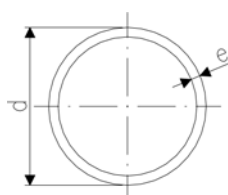


Model:

- Material: PE 100, Polyethylene
- Colour: RAL 9011 graphite black
- Dimension: DIN 8074
- Pipe length: 5m, with plain ends

d [mm]	PN	Code	CFM	kg	e [mm]
90	10	193 017 113	253 98 54	1.400	5,1
110	10	193 017 114	253 98 55	2.100	6,3
125	10	193 017 115	253 98 56	2.690	7,1
140	10	193 017 116	253 98 57	3.370	8,0
160	10	193 017 117	253 98 58	4.400	9,1
180	10	193 017 118	253 98 59	5.540	10,2
200	10	193 017 119	253 98 61	6.860	11,4
225	10	193 017 120	253 98 62	8.640	12,8
280	10	193 017 122	253 98 64	13.300	15,9
315	10	193 017 123	253 98 65	16.900	17,9

Containment pipes, PVC-U



Model:

- Material: PVC-U, Polyvinylchloride unplasticised DIN 8061
- Colour: RAL 7011 - dark-grey
- Dimension: acc. DIN 8062
- Pipe length: 5m, with plain ends

Attention:

- Pressure rating for containment pipe. For using the EPDM coupler the pressure rating for containment pipe is only 1 bar.

d [mm]	PN	Code	CFM	kg	e [mm]
50	16	161 017 110	239 80 37	0.809	3.7
63	16	161 017 111	239 80 38	1.290	4.7
75	10	161 017 087	239 80 11	1.220	3.6
90	10	161 017 088	239 80 12	1.750	4.3
110	10	161 017 089	239 80 13	2.610	5.3
125	6	161 017 065		2.130	3.7

CONTAIN-IT Plus

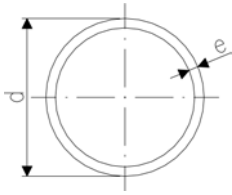
Containment pipe PVC-U transparent

Model:

- Material: PVC-U, Polyvinylchloride unplasticised DIN 8061
- Colour: transparent
- Dimension: acc. DIN 8062
- Pipe length: 5m, with plain ends

Attention:

- Pressure rating for containment pipe. For using the EPDM coupler the pressure rating for containment pipe is only 1 bar.



d [mm]	PN	Code	CFM	kg	e [mm]	Description	
50	16	192 017 110	239 81 07	0.809	3.7		
63	16	192 017 111	239 81 08	1.290	4.7		
75	10	192 017 087	239 80 87	1.220	3.6		
90	10	192 017 088	239 80 88	1.750	4.3		
110	10	192 017 089	239 80 89	2.610	5.3		

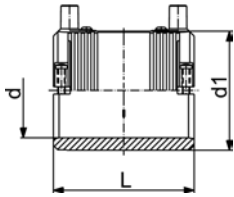
Overview Outer pipe / spacer

Dimension Inner Pipe	Suitable Containment pipe (Outer pipe)									
	PE100			PVC-U			PVC-U transparent			
	S5/SDR11		S8,3/SDR17,6							
20	50x4,6	193.017.160		50x3,7	PN16	161.017.110	50x3,7	PN16	192.017.110	
25	50x4,6	193.017.160		50x3,7	PN16	161.017.110	50x3,7	PN16	192.017.110	
32	63x5,8	193.017.161		63x4,7	PN16	161.017.111	63x4,7	PN16	192.017.111	
40	75x6,8	193.017.162		75x3,6	PN10	161.017.087	75x3,6	PN10	192.017.087	
50			90x5,1	193.017.113	90x4,3	PN10	161.017.088	90x4,3	PN10	192.017.088
63			110x6,3	193.017.114	110x5,3	PN10	161.017.089	110x5,3	PN10	192.017.089
75			125x7,1	193.017.115	125x3,7	PN6	161.017.065	125x3,7	PN6	
90			140x8,0	193.017.116	140x4,1	PN6	161.017.066	140x4,1	PN6	
110			160x9,1	193.017.117	160x4,7	PN6	161.017.067	160x4,7	PN6	
125			180x10,2	193.017.118	180x5,3	PN6	161.017.068	180x5,3	PN6	
140			200x11,4	193.017.119	200x5,9	PN6	161.017.069	200x5,9	PN6	On Request
160			225x12,8	193.017.120	225x6,6	PN6	161.017.070	225x6,6	PN6	
200			280x15,9	193.017.122	280x5,5	PN4	On Request	280x5,5	PN4	
225			315x17,9	193.017.123	315x6,2	PN4	Request	315x6,2	PN4	

Dimension Spacer	Suitable Containment pipe (Outer pipe)									
	PE100			PVC-U			PVC-U transparent			
	S5/SDR11		S8,3/SDR17,6							
700.238.060 d20	50x4,6	193.017.160		50x3,7	PN16	161.017.110	50x3,7	PN16	192.017.110	
700.238.061 d25	50x4,6	193.017.160		50x3,7	PN16	161.017.110	50x3,7	PN16	192.017.110	
700.238.062 d32	63x5,8	193.017.161		63x4,7	PN16	161.017.111	63x4,7	PN16	192.017.111	
700.238.043 d40	75x6,8	193.017.162		75x3,6	PN10	161.017.087	75x3,6	PN10	192.017.087	
700.238.064 d50			90x5,1	193.017.113	90x4,3	PN10	161.017.088	90x4,3	PN10	192.017.088
700.238.065 d63			110x6,3	193.017.114	110x5,3	PN10	161.017.089	110x5,3	PN10	192.017.089
700.238.046 d75			125x7,1	193.017.115	125x3,7	PN6	161.017.065	125x3,7	PN6	
700.238.047 d90			140x8,0	193.017.116	140x4,1	PN6	161.017.066	140x4,1	PN6	
700.238.068 d110			160x9,1	193.017.117	160x4,7	PN6	161.017.067	160x4,7	PN6	
700.238.049 d125			180x10,2	193.017.118	180x5,3	PN6	161.017.068	180x5,3	PN6	
700.238.070 d140			200x11,4	193.017.119	200x5,9	PN6	161.017.069	200x5,9	PN6	On Request
700.238.071 d160			225x12,8	193.017.120	225x6,6	PN6	161.017.070	225x6,6	PN6	
700.238.053 d200			280x15,9	193.017.122	280x5,5	PN4	On Request	280x5,5	PN4	
700.238.054 d225			315x17,9	193.017.123	315x6,2	PN4	Request	315x6,2	PN4	

CONTAIN-IT Plus

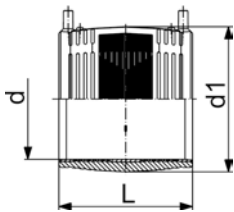
Coupler with integral pipe fixation



- PE 100 SDR 11 (ISO S5)
- 10 bar Gas / 16 bar Water
- 4 mm pin connectors
- Limited path fusion indicators
- Removable centre stop

d [mm]	Code	CFM	kg	d1 [mm]	L [mm]
50	753 911 610	246 20 12	0.131	66	88
63	753 911 611	246 20 14	0.194	81	96

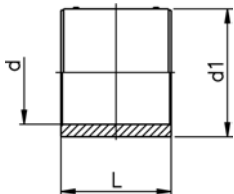
Coupler



- PE 100 SDR 11 (ISO S5)
- 10 bar Gas / 16 bar Water
- 4 mm pin connectors
- Limited path fusion indicators
- Removable centre stop up to d160

d [mm]	Code	CFM	kg	d1 [mm]	L [mm]
75	753 911 612	183 32 78	0.282	96	110
90	753 911 613	183 32 79	0.406	113	125
110	753 911 614	183 32 80	0.692	138	145
125	753 911 615	183 32 81	0.718	154	156
140	753 911 616	183 32 82	0.945	172	166

Coupler

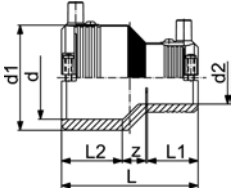


- PE 100 SDR 17 (ISO S8)
- 5 bar Gas / 10 bar Water
- 4 mm pin connectors
- Limited path fusion indicators
- d160 with removable centre stop

d [mm]	Code	CFM	kg	d1 [mm]	L [mm]
160	753 911 817	183 32 94	1.017	186	180
180	753 911 818	183 32 95	1.434	213	192
200	753 911 819	183 32 96	1.726	233	206
225	753 911 820	183 32 97	2.545	261	225
250	753 911 821	183 32 98	4.616	304	248
280	753 911 822	183 32 99	5.606	304	252
315	753 911 823	183 33 00	8.186	382	267

CONTAIN-IT Plus

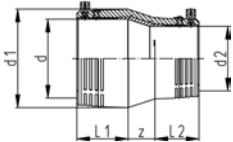
Reducer With integral pipe fixation



- PE 100 SDR 11 (ISO S5)
- 10 bar Gas / 16 bar Water
- 4 mm pin connectors
- Limited path fusion indicators

d [mm]	d2 [mm]	Code	CFM	kg	d1 [mm]	L [mm]	L1 [mm]	L2 [mm]	z [mm]
63	50	753 901 658	246 22 26	0.176	81	105	43	48	15

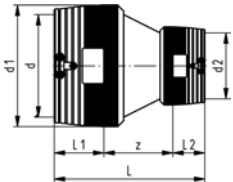
Reducer



- PE 100 SDR 11 (ISO S5)
- 10 bar Gas / 16 bar Water
- 4 mm pin connectors
- Limited path fusion indicators

d [mm]	d2 [mm]	Code	CFM	kg	d1 [mm]	L [mm]	L1 [mm]	L2 [mm]	z [mm]
90	63	753 901 831	246 22 46	0.385	113	146	63	47	36
110	90	753 901 833	246 22 49	0.700	138	173	73	63	38
125	90	753 901 836	246 22 51	0.891	152	180	79	61	40
160	110	753 901 834	246 22 53	1.641	196	226	91	70	65
180	125	753 901 835	246 22 54	1.962	220	247	97	70	80

Reducer



- PE 100 SDR 11 (ISO S5)
- 10 bar Gas / 16 bar Water
- 4 mm pin connectors
- Limited path fusion indicators
- Two separate fusion zones

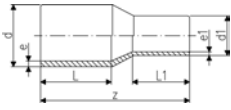
d [mm]	d2 [mm]	Code	CFM	kg	d1 [mm]	L [mm]	L1 [mm]	L2 [mm]	z [mm]
200	160	753 901 837	246 22 55	5.098	250	365	104	90	171
225	160	753 901 838	246 22 56	6.000	280	385	112	90	183

CONTAIN-IT Plus

Reducer PE100 SDR11



- Long spigot version
- 10 bar Gas / 16 bar Water

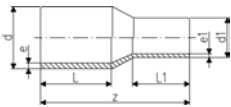


d [mm]	d1 [mm]	Code	CFM	kg	z [mm]	L [mm]	L1 [mm]	e [mm]	e1 [mm]	PF
75	50	753 901 064	254 07 18	0.188	170	72	63	6,8	4,6	2 51 301 001
75	63	753 901 065	254 07 19	0.209	170	72	65	6,8	5,8	2 51 301 001
90	50	753 901 072	254 07 26	0.289	190	81	63	8,2	4,6	2 51 301 001

Reducer PE100 SDR17/17,6



- Long spigot version
- 5 bar Gas / 10 bar Water

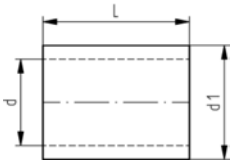


d [mm]	d1 [mm]	Code	CFM	kg	z [mm]	L [mm]	L1 [mm]	e [mm]	e1 [mm]	PF
90	63	753 900 872	183 39 17	0.224	182	79	70	5,4	3,8	2 51 301 001
90	75	753 900 870	254 06 59	0.234	185	79	70	5,4	4,5	2 51 301 001
110	63	753 900 877	183 39 22	0.326	185	82	63	6,6	3,8	2 51 301 001
110	90	753 900 876	254 06 65	0.333	205	85	80	6,6	5,4	2 51 301 001
125	63	753 900 882	183 39 25	0.610	200	87	63	7,4	3,8	2 51 301 001
125	90	753 900 881	254 06 68	0.461	215	90	80	7,4	5,4	2 51 301 001
125	110	753 900 880	254 06 67	0.507	215	90	85	7,4	6,6	2 51 301 001
140	75	753 900 886	254 07 93	0.560	230	112	70	8,3	4,5	2 51 301 001
140	90	753 900 887	254 06 73	0.642	230	112	79	8,3	5,4	2 51 301 001
140	110	753 900 884	254 06 71	0.715	230	112	82	8,3	6,6	2 51 301 001
140	125	753 900 885	254 06 72	0.754	235	115	87	8,3	7,4	2 51 301 001
160	90	753 900 888	254 06 74	0.752	248	120	85	9,5	5,4	2 51 301 001
160	110	753 900 890	254 06 76	0.930	245	100	85	9,5	6,6	2 51 301 001
160	125	753 900 889	254 06 75	0.930	245	100	90	9,5	7,4	2 51 301 001
160	140	753 900 831	254 06 54	0.995	260	120	110	9,5	8,3	2 51 301 001
180	90	753 900 873	254 06 62	1.010	237	105	79	10,7	5,4	2 51 301 001
180	110	753 900 874	254 06 63	1.600	270	120	92	10,7	6,6	2 51 301 001
180	125	753 900 891	254 06 77	1.165	255	105	90	10,7	7,4	2 51 301 001
180	140	753 900 875	254 06 64	1.720	270	120	110	10,7	8,3	2 51 301 001
180	160	753 900 832	254 06 55	2.100	255	105	100	10,7	9,5	2 51 301 001
200	140	753 900 866	254 06 56	1.800	275	120	110	11,9	8,3	2 51 301 001
200	160	753 900 892	254 06 78	1.664	265	115	100	11,9	9,5	2 51 301 001
200	180	753 900 893	254 06 79	2.580	265	115	105	11,9	10,7	2 51 301 001
225	140	753 900 867	254 06 57	2.021	280	120	100	13,4	8,3	2 51 301 001
225	160	753 900 896	254 06 83	2.020	280	120	100	13,4	9,5	2 51 301 001
225	180	753 900 895	254 06 82	2.240	280	120	105	13,4	10,7	2 51 301 001
225	200	753 900 894	254 06 81	2.237	280	120	115	13,4	11,9	2 51 301 001
280	200	753 900 898	254 06 84	3.800	333	140	112	16,6	11,9	2 51 301 002
280	225	753 900 899	254 06 85	4.100	335	140	120	16,6	13,4	2 51 301 002
315	200	753 900 804	254 06 43	5.390	380	180	134	18,7	11,9	2 51 301 002
315	225	753 900 807	254 06 46	6.200	365	150	120	18,7	13,4	2 51 301 002
315	280	753 900 806	254 06 45	5.940	365	150	140	18,7	16,6	2 51 301 002

CONTAIN-IT Plus

Coupler EPDM

- Connection for outer pipe
- leak tight up to 1 bar
- Not to be applied when there are axial forces

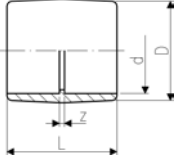


d [mm]	PN	Code	kg	d1 [mm]	L [mm]
50	1	700 238 444	0.217	66	85
63	1	700 238 445	0.260	80	85
75	1	700 238 446	0.307	93	85
90	1	700 238 447	0.352	110	85
110	1	700 238 448	0.829	130	125
125	1	700 238 449	0.948	145	125
140	1	700 238 450	1.042	160	125
160	1	700 238 451	1.132	180	125
180	1	700 238 452	1.215	200	125
200	1	700 238 453	1.387	220	125
225	1	700 238 454	1.490	245	125
280	1	700 238 456	2.250	300	150
315	1	700 238 457	2.462	335	150

CONTAIN-IT Plus

Socket equal PVC-U metric

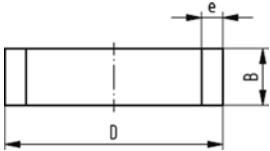
¹ Socket d355 and d400 fabricated from pipe



d [mm]	d [inch]	PN	Code	CFM	kg	z [mm]	D [mm]	L [mm]
50		16	721 910 110	239 87 77	0.064	3	58	65
63		16	721 910 111	239 87 78	0.118	3	73	79
75	2 ½	16	721 910 112	239 87 79	0.188	4	87	92
90		16	721 910 113	239 87 81	0.328	5	105	107
110		16	721 910 114	239 87 82	0.554	6	128	128
125		16	721 910 115	239 87 83	0.825	7	142	145
140	5	16	721 910 116	239 87 84	1.118	7	162	159
160		16	721 910 117	239 87 85	1.540	8	183	180
200		10	721 910 119	239 87 86	2.559	9	221	221
225		10	721 910 120	239 87 87	3.519	10	253	248
280		10	721 910 122	239 87 89	8.312	16	321	314
315		6	721 910 123	239 87 91	10.388	16	356	348

Snap ring PE

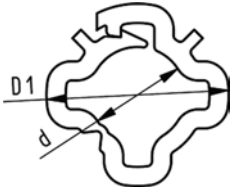
• For closing the gap in the outer pipe



d [mm]	Code	kg	e [mm]	B [mm]
50	700 238 424	0.021	4.6	30
63	700 238 425	0.030	5.8	30
75	700 238 426	0.038	6.9	30
90	700 238 427	0.040	5.1	30
110	700 238 428	0.062	6.3	30
125	700 238 429	0.079	7.1	30
140	700 238 430	0.101	8.0	30
160	700 238 431	0.129	9.1	30
180	700 238 432	0.161	10.2	30
200	700 238 433	0.204	11.4	30
225	700 238 434	0.251	12.8	30
280	700 238 436	0.396	15.9	30
315	700 238 437	0.498	17.9	30

CONTAIN-IT Plus

Spacer PP-H



- To center the medium pipe within the outer pipe
- To clamp upon the medium pipe

d [mm]	D1 [mm]	Code	kg	B [mm]
20	38	700 238 060	0.006	15
25	38	700 238 061	0.008	20
32	48	700 238 062	0.011	20
40	57	700 238 043	0.019	25
50	76	700 238 064	0.025	25
63	94	700 238 065	0.037	25
75	104	700 238 046	0.047	30
90	118	700 238 047	0.059	30
110	138	700 238 068	0.080	35
125	152	700 238 049	0.100	35
140	173	700 238 070	0.125	35
160	195	700 238 071	0.141	35
200	238	700 238 053	0.255	40
225	267	700 238 054	0.258	40



Foil roll PE

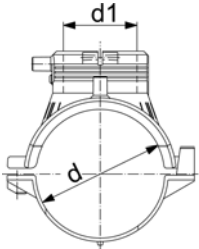
- To fix and seal of pre-assembled ELGEF Coupler

	Code	kg
Roll of PE-stretch foil	799 198 041	0.341

CONTAIN-IT Plus

Leak detection

Electrofusion saddle



L = length / Länge

- PE 100 SDR 11 (ISO S5)
- 10 bar Gas / 16 bar Water
- Complete with lower part
- ***Complete with moulded-on lower part
- 4 mm pin connectors
- Limited path fusion indicators

*not suitable for all tapping-tees, tapping-valves and spigots with cutter of the modular systems

** = not suitable for all tapping-tees, tapping-valves and spigots with cutter of the modular systems / delivery without lower part for assembling as Top load with tool 799.350.475

d [mm]	d1 [mm]	Code	CFM	kg	L [mm]
63	63	193 131 037	246 24 56	0.325	165
75	63	193 131 047	246 24 59	0.455	165
90	63	193 131 057	246 24 63	0.412	165
*** 110	63	193 133 067	183 40 24	0.422	182
125	63	193 131 077	246 24 69	0.502	165
140	63	193 131 087	246 24 73	0.523	165
*** 160	63	193 133 097	183 40 25	0.543	182
180	63	193 131 107	246 24 79	0.600	165
200	63	193 131 117	246 24 83	0.634	165
225	63	193 131 127	246 24 86	0.618	165
** 280	63	193 131 147	246 28 21	0.359	165
** 315 - 355	63	193 131 157	246 28 22	0.373	165

Adapter for branch saddle

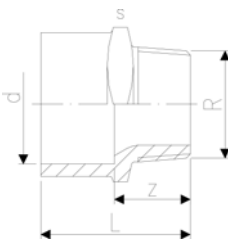


d [mm]	Rp [inch]	Code	kg
63	½	193 281 617	0.060

Adaptor bush equal PVC-U metric R

Model:

- With solvent cement socket metric and taper male thread R
- Do not use thread sealing pastes that are harmful to PVC-U
- Install with low mechanical stress and avoid large cyclic temperature changes



d [mm]	R [inch]	PN	d [inch]	Code	CFM	kg	z [mm]	L [mm]	s [mm]
20	½	16	½	721 910 706	239 88 11	0.018	24	40	32

CONTAIN-IT Plus

Ball valve type 546 PVC-U With solvent cement spigots metric



DN10/15 - 50



Model:

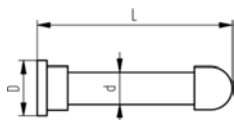
- For easy installation and removal
- Ball seals PTFE
- Without mounting inserts
- z-dimension, valve end and union nut are **not compatible** with type 346 (DN10/15-50) resp. type 370 (DN65-100)

Option:

- Individual configuration of the valve (see diagram)
- Multifunctional module with integrated limit switches
- Pneumatic or electric actuators from +GF+

d [mm]	DN [mm]	PN	kv-value ($\Delta p=1$ bar) [l/min]	EPDM Code	kg
20	15	16	185	161 546 042	0.155

d [mm]	D [mm]	H [mm]	H1 [mm]	L [mm]	L1 [mm]	L2 [mm]	L3 [mm]	L4 [mm]	L5 [mm]	L6 [mm]	closest inch
20	50	57	27	124	77	56	130	25	32	45	1/2



Monitoring pipe PVC-U, transparent

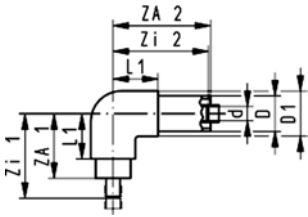
d [mm]	Code	kg	L [mm]	D [mm]
20	700 244 652	0.033	110	38

CONTAIN-IT Plus

PVC-U/PE100

Connection of inner pipe by solvent cementing

Elbow 90° PVC-U/PE100

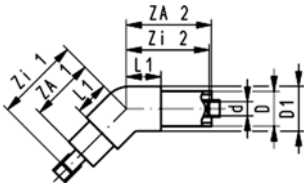


d [mm]	D [mm]	PN [bar]	PVC-U Tangit / PE Code	PVC-U Dytex / PE Code
20	50	16 / 16	721 104 106	721 104 156
25	50	16 / 16	721 104 107	721 104 157
32	63	16 / 16	721 104 108	721 104 158
40	75	16 / 16	721 104 109	721 104 159
50	90	16 / 10	721 104 110	721 104 160
63	110	16 / 10	721 104 111	721 104 161
75	125	16 / 10	721 104 112	721 104 162
90	140	16 / 10	721 104 113	721 104 163
110	160	16 / 10	721 104 114	721 104 164
125	180	16 / 10	721 104 115	
140	200	16 / 10	721 104 116	
160	225	16 / 10	721 104 117	
200	280	10 / 10	721 104 119	
225	315	10 / 10	721 104 120	

d [mm]	ZA 1 [mm]	ZA 2 [mm]	L1 [mm]	Zi 1 [mm]	Zi 2 [mm]	D1 [mm]
20	105	175	71	139	174	66
25	105	175	71	142	171	66
32	120	190	81	160	183	81
40	145	225	94	189	214	97
50	170	260	110	219	244	113
63	210	310	132	266	287	136
75	225	330	142	288	301	151
90	250	360	178	321	324	196
110	260	375	178	342	329	196
125	280	400	195	371	346	219
140	285	405	170	383	344	250
160	335	460	205	444	389	280
200	370	500	220	501	409	315
225	350	500	220	494	396	315

CONTAIN-IT Plus

Elbow 45° PVC-U/PE100



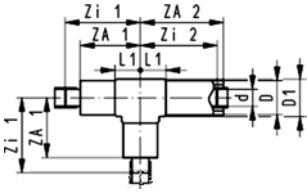
d [mm]	D [mm]	PN [bar]	PVC-U Tangit / PE Code	PVC-U Dytex / PE Code
20	50	16 / 16	721 154 106	721 154 156
25	50	16 / 16	721 154 107	721 154 157
32	63	16 / 16	721 154 108	721 154 158
40	75	16 / 16	721 154 109	721 154 159
50	90	16 / 10	721 154 110	721 154 160
63	110	16 / 10	721 154 111	721 154 161
75	125	16 / 10	721 154 112	721 154 162
90	140	16 / 10	721 154 113	721 154 163
110	160	16 / 10	721 154 114	721 154 164
125	180	16 / 10	721 154 115	
140	200	16 / 10	721 154 116	
160	225	16 / 10	721 154 117	
200	280	10 / 10	721 154 119	
225	315	10 / 10	721 154 120	

d [mm]	ZA 1 [mm]	ZA 2 [mm]	L1 [mm]	Zi 1 [mm]	Zi 2 [mm]	D1 [mm]
20	105	175	56	139	174	66
25	105	175	56	142	171	66
32	120	190	63	160	183	81
40	145	225	71	189	214	97
50	170	260	52	219	244	112
63	210	310	103	266	287	136
75	225	330	107	288	301	151
90	250	360	134	321	324	196
110	260	375	134	342	329	196
125	280	400	142	371	346	217
140	285	405	170	383	344	250
160	335	460	205	444	389	280
200	370	500	220	501	409	315
225	350	500	220	494	396	315

CONTAIN-IT Plus

T90° equal PVC-U/PE100

- T 45° on request



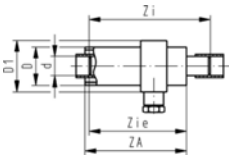
d [mm]	D [mm]	PN [bar]	PVC-U Tangit / PE Code	PVC-U Dytex / PE Code
20	50	16 / 16	721 204 106	721 204 156
25	50	16 / 16	721 204 107	721 204 157
32	63	16 / 16	721 204 108	721 204 158
40	75	16 / 16	721 204 109	721 204 159
50	90	16 / 10	721 204 110	721 204 160
63	110	16 / 10	721 204 111	721 204 161
75	125	16 / 10	721 204 112	721 204 162
90	140	16 / 10	721 204 113	721 204 163
110	160	16 / 10	721 204 114	721 204 164
125	180	16 / 10	721 204 115	
140	200	16 / 10	721 204 116	
160	225	16 / 10	721 204 117	
200	280	10 / 10	721 204 119	
225	315	10 / 10	721 204 120	

d [mm]	ZA 1 [mm]	ZA 2 [mm]	L1 [mm]	Zi 1 [mm]	Zi 2 [mm]	D1 [mm]
20	105	175	43	139	174	54
25	105	175	43	142	171	54
32	120	190	50	160	183	67
40	145	225	61	189	214	79
50	170	260	71	219	244	101
63	210	310	80	266	287	119
75	225	330	91	288	301	134
90	250	360	108	321	324	170
110	260	375	108	342	329	170
125	280	400	157	371	346	190
140	285	405	170	383	344	270
160	335	460	205	444	389	300
200	370	500	220	501	409	325
225	350	500	220	494	396	325

CONTAIN-IT Plus

Termination fitting PVC-U/PE100

- Sealing in body EPDM

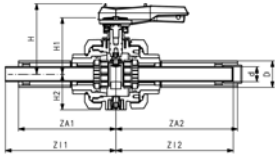


d [mm]	D [mm]	PN [bar]	PVC-U Tangit / PE Code	PVC-U Dytex / PE Code	Za [mm]	Zi [mm]	Zie [mm]	D1 [mm]
20	50	16 / 16	721 964 106	721 964 156	175	208	174	70
25	50	16 / 16	721 964 107	721 964 157	175	208	171	70
32	63	16 / 16	721 964 108	721 964 158	185	218	178	80
40	75	16 / 16	721 964 109	721 964 159	205	238	194	90
50	90	16 / 10	721 964 110	721 964 160	250	283	234	110
63	110	16 / 10	721 964 111	721 964 161	270	303	247	130
75	125	16 / 10	721 964 112	721 964 162	290	324	261	140
90	140	16 / 10	721 964 113	721 964 163	310	345	274	160
110	160	16 / 10	721 964 114	721 964 164	330	366	284	170
125	180	16 / 10	721 964 115		345	282	291	190
140	200	16 / 10	721 964 116		360	397	299	210
160	225	16 / 10	721 964 117		390	428	319	230
200	280	10 / 10	721 964 119		375	415	283	280
225	315	10 / 10	721 964 120		430	470	326	315

CONTAIN-IT Plus

Ball valve type 546 PVC-U/PE100

Connections for solvent cementing with Tangit



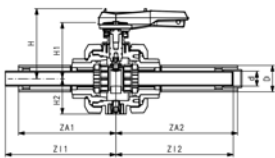
Model:

- Manual operated
- Manual override with ratchet setting
- Pneumatic or electric actuator available separately
- Protective housing PVC-U PN6 / sealing according to inner pipe
- For easy installation and removal

d [mm]	D [mm]	PN [bar]	EPDM Code	FPM Code	ZA 1 [mm]	ZA 2 [mm]	Zi 1 [mm]	Zi 2 [mm]	H [mm]	H1 [mm]	H2 [mm]
20	50	16 / 6	721 239 106	721 239 126	255	330	286	329	222	182	85
25	50	16 / 6	721 239 107	721 239 127	255	330	289	326	222	182	85
32	63	16 / 6	721 239 108	721 239 128	275	355	312	348	234	194	105
40	75	16 / 6	721 239 109	721 239 129	325	410	366	399	244	210	123
50	90	16 / 6	721 239 110	721 239 130	340	425	386	409	244	210	123
63	110	16 / 6	721 239 111	721 239 131	350	480	403	457	244	210	123

Ball valve type 546 PVC-U/PE100

Connections for solvent cementing with Dytex



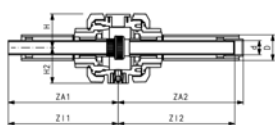
Model:

- Manual operated
- Manual override with ratchet setting
- Pneumatic or electric actuator available separately
- Protective housing PVC-U PN6 / sealing according to inner pipe
- For easy installation and removal

d [mm]	D [mm]	PN [bar]	EPDM Code	FPM Code	ZA 1 [mm]	ZA 2 [mm]	Zi 1 [mm]	Zi 2 [mm]	H [mm]	H1 [mm]	H2 [mm]
20	50	16 / 6	721 239 156	721 239 176	255	330	286	329	222	182	85
25	50	16 / 6	721 239 157	721 239 177	255	330	289	326	222	182	85
32	63	16 / 6	721 239 158	721 239 178	275	355	312	348	234	194	105
40	75	16 / 6	721 239 159	721 239 179	325	410	366	399	244	210	123
50	90	16 / 6	721 239 160	721 239 180	340	425	386	409	244	210	123
63	110	16 / 6	721 239 161	721 239 181	350	480	403	457	244	210	123

Mechanical joint PVC-U/PE100

Connections for solvent cementing with Tangit



Model:

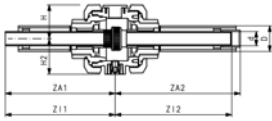
- Protective housing PVC-U PN6 / sealing according to inner pipe
- With union PVC-U
- For easy installation and removal

d [mm]	D [mm]	PN [bar]	EPDM Code	FPM Code	ZA 1 [mm]	ZA 2 [mm]	Zi 1 [mm]	Zi 2 [mm]	H [mm]	H2 [mm]
20	50	16 / 6	721 240 106	721 240 126	255	330	286	329	92	85
25	50	16 / 6	721 240 107	721 240 127	255	330	289	326	92	85
32	63	16 / 6	721 240 108	721 240 128	275	355	312	348	104	105
40	75	16 / 6	721 240 109	721 240 129	325	410	366	399	119	123
50	90	16 / 6	721 240 110	721 240 130	340	425	386	409	119	123
63	110	16 / 6	721 240 111	721 240 131	350	480	403	457	119	123

CONTAIN-IT Plus

Mechanical joint PVC-U/PE100

Connections for solvent cementing with Dytex



Model:

- Protective housing PVC-U PN6 / sealing according to inner pipe
- With union PVC-U
- For easy installation and removal

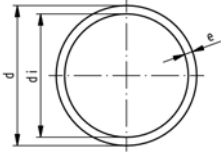
d [mm]	D [mm]	PN [bar]	EPDM Code	FPM Code	ZA 1 [mm]	ZA 2 [mm]	Zi 1 [mm]	Zi 2 [mm]	H [mm]	H2 [mm]
20	50	16 / 6	721 240 156	721 240 176	255	330	286	329	92	85
25	50	16 / 6	721 240 157	721 240 177	255	330	289	326	92	85
32	63	16 / 6	721 240 158	721 240 178	275	355	312	348	104	105
40	75	16 / 6	721 240 159	721 240 179	325	410	366	399	119	123
50	90	16 / 6	721 240 160	721 240 180	340	425	386	409	119	123
63	110	16 / 6	721 240 161	721 240 181	350	480	403	457	119	123

CONTAIN-IT Plus

Inner pipe and connection elements PVC-U

Pipe PVC-U grey

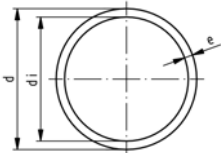
Series S6.3 SDR13.6 nominal pressure PN16



Model:

- Material: PVC-U, Polyvinylchloride unplasticised DIN 8061
- Colour: RAL 7011 - dark-grey
- Dimension: DIN EN ISO 15493, DIN 8062
- Pipe length: 5m, with plain ends
- Minimum order quantity: 1 length

d [mm]	Size (NB) [inch]	PN	Code	CFM	e [mm]	di [mm]	Weight [kg/m]
20		16	161 017 106	239 80 33	1.5	17.0	0.137
25		16	161 017 107	239 80 34	1.9	21.2	0.212
32		16	161 017 108	239 80 35	2.4	27.2	0.342
40		16	161 017 109	239 80 36	3.0	34.0	0.525
50		16	161 017 110	239 80 37	3.7	42.6	0.809
63		16	161 017 111	239 80 38	4.7	53.6	1.290
75	2 ½	16	161 017 112	239 80 39	5.6	58.2	1.820
90		16	161 017 113	239 80 41	6.7	76.6	2.610
110		16	161 017 114	239 80 42	8.1	93.8	3.900
125		16	161 017 115	239 80 43	9.2	106.6	5.010
140	5	16	161 017 116	239 80 44	10.3	119.4	6.270
160		16	161 017 117	239 80 45	11.8	136.4	8.170



Pipe PVC-U grey

Series S10 SDR21 nominal pressure PN10

Model:

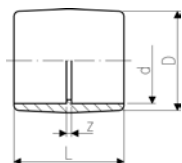
- Material: PVC-U, Polyvinylchloride unplasticised DIN 8061
- Colour: RAL 7011 - dark-grey
- Dimension: DIN EN ISO 15493, DIN 8062
- Pipe length: 5m, with plain ends
- Minimum order quantity: 1 length

d [mm]	PN	Code	CFM	e [mm]	di [mm]	Weight [kg/m]
200	10	161 017 094	239 80 18	9.6	180.8	8.510
225	10	161 017 095	239 80 19	10.8	203.4	10.800

CONTAIN-IT Plus

Socket equal PVC-U metric

¹ Socket d355 and d400 fabricated from pipe

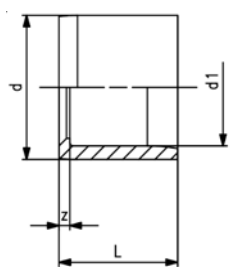


d [mm]	d [inch]	PN	Code	CFM	z [mm]	D [mm]	L [mm]
20		16	721 910 106	239 87 73	3	26	35
25		16	721 910 107	239 87 74	3	32	41
32		16	721 910 108	239 87 75	3	39	47
40		16	721 910 109	239 87 76	3	48	55
50		16	721 910 110	239 87 77	3	58	65
63		16	721 910 111	239 87 78	3	73	79
75	2 ½	16	721 910 112	239 87 79	4	87	92
90		16	721 910 113	239 87 81	5	105	107
110		16	721 910 114	239 87 82	6	128	128
125		16	721 910 115	239 87 83	7	142	145
140	5	16	721 910 116	239 87 84	7	162	159
160		16	721 910 117	239 87 85	8	183	180
200		10	721 910 119	239 87 86	9	221	221
225		10	721 910 120	239 87 87	10	253	248

Reducing bush short PVC-U metric

Model:

- With solvent cement spigot and socket metric



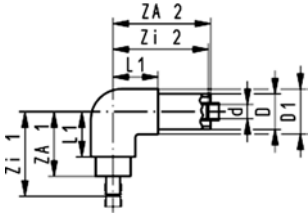
d [mm]	d1 [mm]	PN	Code	CFM	z [mm]	L [mm]
* 16	12	16	721 900 331	239 87 25	2	14
* 25	20	16	721 900 337	239 87 27	3	19
* 32	25	16	721 900 341	239 87 28	3	22
40	20	16	721 900 348	239 87 33	10	26
* 40	32	16	721 900 346	239 87 31	4	26
50	20	16	721 900 355	239 87 37	15	31
50	25	16	721 900 354	239 87 36	12	31
* 50	40	16	721 900 352	239 87 34	5	31
63	32	16	721 900 360	239 87 41	16	38
* 63	50	16	721 900 358	239 87 38	7	38
* 75	63	16	721 900 364	239 87 42	6	44
90	50	16	721 900 372	239 87 46	20	51
* 90	75	16	721 900 370	239 87 44	7	51
110	63	16	721 900 378	239 87 48	23	61
* 110	90	16	721 900 376	239 87 47	10	61
* 125	110	16	721 900 380	239 87 51	8	69
140	90	16	721 900 386	239 87 55	25	76
* 140	125	16	721 900 384	239 87 53	7	76
160	110	16	721 900 390	239 87 57	25	86
* 160	140	16	721 900 388	239 87 56	10	86
200	110	10	721 900 393	239 87 61	45	108
200	160	10	721 900 392	239 87 59	20	108
225	140	10	721 900 398	239 87 65	41	120
* 225	200	10	721 900 181	239 86 99	13	119

CONTAIN-IT Plus

PVC-C/PE100

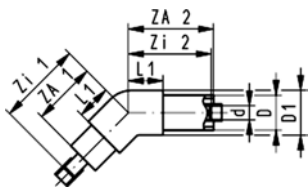
Connection of inner pipe by solvent cementing

Elbow 90° PVC-C/PE100



d [mm]	D [mm]	PN [bar]	PVC-C Tangit / PE Code	PVC-C Dytex / PE Code	kg
20	50	16 / 16	723 104 106	723 104 156	0.490
25	50	16 / 16	723 104 107	723 104 157	0.545
32	63	16 / 16	723 104 108	723 104 158	0.787
40	75	16 / 16	723 104 109	723 104 159	1.414
50	90	16 / 10	723 104 110	723 104 160	1.882
63	110	16 / 10	723 104 111	723 104 161	3.307
75	125	16 / 10	723 104 112	723 104 162	4.740
90	140	16 / 10	723 104 113	723 104 163	7.486
110	160	16 / 10	723 104 114	723 104 164	10.358

d [mm]	ZA 1 [mm]	ZA 2 [mm]	L1 [mm]	Zi 1 [mm]	Zi 2 [mm]	D1 [mm]
20	105	175	71	139	174	66
25	105	175	71	142	171	66
32	120	190	81	160	183	81
40	145	225	94	189	214	97
50	170	260	110	219	244	113
63	210	310	132	266	287	136
75	225	330	142	288	301	151
90	250	360	178	321	324	196
110	260	375	178	344	327	196



Elbow 45° PVC-C/PE100

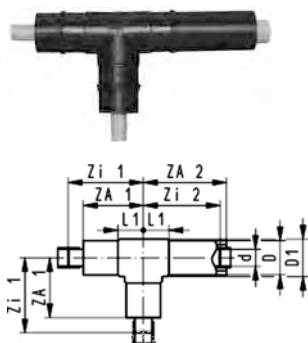
d [mm]	D [mm]	PN [bar]	PVC-C Tangit / PE Code	PVC-C Dytex / PE Code	kg
20	50	16 / 16	723 154 106	723 154 156	0.411
25	50	16 / 16	723 154 107	723 154 157	0.492
32	63	16 / 16	723 154 108	723 154 158	0.814
40	75	16 / 16	723 154 109	723 154 159	1.416
50	90	16 / 10	723 154 110	723 154 160	1.821
63	110	16 / 10	723 154 111	723 154 161	3.193
75	125	16 / 10	723 154 112	723 154 162	4.605
90	140	16 / 10	723 154 113	723 154 163	7.501
110	160	16 / 10	723 154 114	723 154 164	9.415

d [mm]	ZA 1 [mm]	ZA 2 [mm]	L1 [mm]	Zi 1 [mm]	Zi 2 [mm]	D1 [mm]
20	105	175	56	139	174	66
25	105	175	56	142	171	66
32	120	190	63	160	183	81
40	145	225	71	189	214	97
50	170	260	85	219	244	113
63	210	310	103	266	287	136
75	225	330	107	288	301	151
90	250	360	134	321	324	196
110	260	375	134	344	326	196

CONTAIN-IT Plus

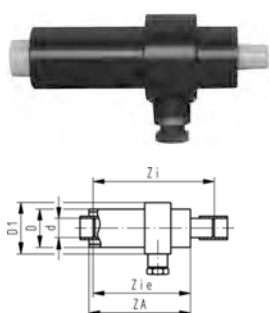
Tee 90° equal PVC-C/PE100

- T 45° on request



d [mm]	D [mm]	PN [bar]	PVC-C Tangit / PE Code	PVC-C Dytex / PE Code	kg
20	50	16 / 16	723 204 106	723 204 156	0.599
25	50	16 / 16	723 204 107	723 204 157	0.673
32	63	16 / 16	723 204 108	723 204 158	1.108
40	75	16 / 16	723 204 109	723 204 159	1.363
50	90	16 / 10	723 204 110	723 204 160	2.611
63	110	16 / 10	723 204 111	723 204 161	4.514
75	125	16 / 10	723 204 112	723 204 162	6.523
90	140	16 / 10	723 204 113	723 204 163	13.901
110	160	16 / 10	723 204 114	723 204 164	15.527

d [mm]	ZA 1 [mm]	ZA 2 [mm]	L1 [mm]	Zi 1 [mm]	Zi 2 [mm]	D1 [mm]
20	105	175	43	139	174	54
25	105	175	43	142	171	54
32	120	190	50	160	183	67
40	145	225	61	189	214	79
50	170	260	71	219	244	101
63	210	310	80	266	287	119
75	225	330	91	288	301	134
90	250	360	108	321	324	170
110	260	375	108	344	327	170



Termination fitting PVC-C/PE100

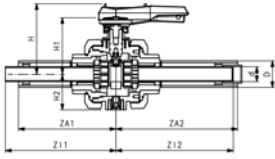
- Sealing in body EPDM

d [mm]	D [mm]	PN [bar]	PVC-C Tangit / PE Code	PVC-C Dytex / PE Code	kg	Za [mm]	Zi [mm]	Zie [mm]	D1 [mm]
20	50	16 / 16	723 964 106	723 964 156	0.288	175	208	174	70
25	50	16 / 16	723 964 107	723 964 157	0.313	175	208	171	70
32	63	16 / 16	723 964 108	723 964 158	0.441	185	218	178	80
40	75	16 / 16	723 964 109	723 964 159	0.654	205	238	194	90
50	90	16 / 10	723 964 110	723 964 160	1.080	250	283	234	110
63	110	16 / 10	723 964 111	723 964 161	1.651	270	303	247	130
75	125	16 / 10	723 964 112	723 964 162	2.227	290	324	262	140
90	140	16 / 10	723 964 113	723 964 163	3.020	310	345	274	160
110	160	16 / 10	723 964 114	723 964 164	4.355	330	366	282	170

CONTAIN-IT Plus

Ball valve type 546 PVC-C/PE100

Connections for solvent cementing with Tangit

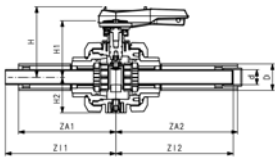


Model:

- Manual operated
- Manual override with ratchet setting
- Pneumatic or electric actuator available separately
- Protective housing PVC-U PN6 / sealing according to inner pipe
- For easy installation and removal

d [mm]	D [mm]	PN [bar]	EPDM Code	FPM Code	kg
20	50	16 / 6	723 239 106	723 239 126	4.500
25	50	16 / 6	723 239 107	723 239 127	7.000
32	63	16 / 6	723 239 108	723 239 128	7.300
40	75	16 / 6	723 239 109	723 239 129	9.800
50	90	16 / 6	723 239 110	723 239 130	11.800
63	110	16 / 6	723 239 111	723 239 131	13.200

d [mm]	ZA 1 [mm]	ZA 2 [mm]	Zi 1 [mm]	Zi 2 [mm]	H [mm]	H1 [mm]	H2 [mm]
20	255	330	286	329	222	182	85
25	255	330	289	326	222	182	85
32	275	355	312	348	234	194	105
40	325	410	366	399	244	210	123
50	340	425	386	409	244	210	123
63	350	480	403	457	244	210	123



Ball valve type 546 PVC-C/PE100

Connections for solvent cementing with Dytex

Model:

- Manual operated
- Manual override with ratchet setting
- Pneumatic or electric actuator available separately
- Protective housing PVC-U PN6 / sealing according to inner pipe
- For easy installation and removal

d [mm]	D [mm]	PN [bar]	EPDM Code	FPM Code	kg
20	50	16 / 6	723 239 156	723 239 176	4.500
25	50	16 / 6	723 239 157	723 239 177	7.000
32	63	16 / 6	723 239 158	723 239 178	7.300
40	75	16 / 6	723 239 159	723 239 179	9.800
50	90	16 / 6	723 239 160	723 239 180	11.800
63	110	16 / 6	723 239 161	723 239 181	13.200

d [mm]	ZA 1 [mm]	ZA 2 [mm]	Zi 1 [mm]	Zi 2 [mm]	H [mm]	H1 [mm]	H2 [mm]
20	255	330	286	329	222	182	85
25	255	330	289	326	222	182	85
32	275	355	312	348	234	194	105
40	325	410	366	399	244	210	123
50	340	425	386	409	244	210	123
63	350	480	403	457	244	210	123

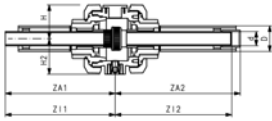
CONTAIN-IT Plus



Mechanical joint PVC-C/PE100 Connections for solvent cementing with Tangit

Model:

- Protective housing PVC-U PN6 / sealing according to inner pipe
- With union PVC-C
- For easy installation and removal



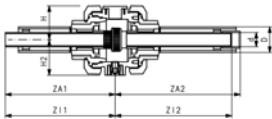
d [mm]	D [mm]	PN [bar]	EPDM Code	FPM Code	kg	ZA 1 [mm]	ZA 2 [mm]	Zi 1 [mm]	Zi 2 [mm]	H [mm]	H2 [mm]
20	50	16 / 6	723 240 106	723 240 126	4.200	255	330	286	329	92	85
25	50	16 / 6	723 240 107	723 240 127	6.500	255	330	289	326	92	85
32	63	16 / 6	723 240 108	723 240 128	6.600	275	355	312	348	104	105
40	75	16 / 6	723 240 109	723 240 129	9.300	325	410	366	399	119	123
50	90	16 / 6	723 240 110	723 240 130	10.300	340	425	386	409	119	123
63	110	16 / 6	723 240 111	723 240 131	10.100	350	480	403	457	119	123



Mechanical joint PVC-C/PE100 Connections for solvent cementing with Dytex

Model:

- Protective housing PVC-U PN6 / sealing according to inner pipe
- With union PVC-C
- For easy installation and removal



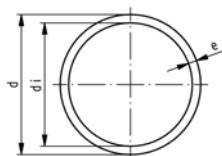
d [mm]	D [mm]	PN [bar]	EPDM Code	FPM Code	kg	ZA 1 [mm]	ZA 2 [mm]	Zi 1 [mm]	Zi 2 [mm]	H [mm]	H2 [mm]
20	50	16 / 6	723 240 156	723 240 176	4.200	255	330	286	329	92	85
25	50	16 / 6	723 240 157	723 240 177	6.500	255	330	289	326	92	85
32	63	16 / 6	723 240 158	723 240 178	6.600	275	355	312	348	104	105
40	75	16 / 6	723 240 159	723 240 179	9.300	325	410	366	399	119	123
50	90	16 / 6	723 240 160	723 240 180	10.300	340	425	386	409	119	123
63	110	16 / 6	723 240 161	723 240 181	10.100	350	480	403	457	119	123

CONTAIN-IT Plus

Inner pipe and connection elements PVC-C

Pipe PVC-C grey

Series S4 SDR9 nominal pressure PN16



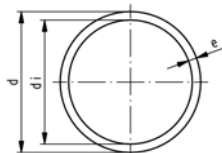
Model:

- Material: PVC-C
- Colour: RAL 7038 - agate grey
- Dimension: DIN 8079, EN ISO 15493
- Pipe length: 5m, with plain ends
- Minimum order quantity: 1 length

d [mm]	PN	Code	e [mm]	di [mm]
20	16	163 017 131	2,3	15.4
25	16	163 017 132	2,8	19.4

Pipe PVC-C grey

Series S6.3 SDR13.6 nominal pressure PN16

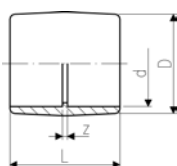


Model:

- Material: PVC-C
- Colour: RAL 7038 - agate grey
- Dimension: DIN 8079, EN ISO 15493
- Pipe length: 5m, with plain ends
- Minimum order quantity: 1 length

d [mm]	PN	Code	kg	e [mm]	di [mm]
32	16	163 017 133	0.379	2.4	27.2
40	16	163 017 134	0.589	3.0	34.0
50	16	163 017 135	0.896	3.7	42.6
63	16	163 017 136	1.420	4.7	53.6
75	16	163 017 137	2.010	5.6	63.0
90	16	163 017 138	2.880	6.7	76.6
110	16	163 017 139	4.270	8.2	93.8

Socket, PVC-C



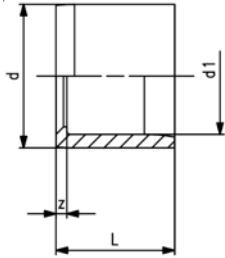
d [mm]	PN	Code	kg	z [mm]	D [mm]	L [mm]
20	16	723 910 106	0.010	3	26	35
25	16	723 910 107	0.017	3	31	41
32	16	723 910 108	0.029	3	39	47
40	16	723 910 109	0.049	3	49	55
50	16	723 910 110	0.085	3	61	65
63	16	723 910 111	0.155	3	76	79
75	16	723 910 112	0.204	4	87	92
90	16	723 910 113	0.338	5	110	107
110	16	723 910 114	0.765	5	131	132

CONTAIN-IT Plus

Reducing bush short pattern PVC-C metric

Model:

- With solvent cement spigot and socket metric



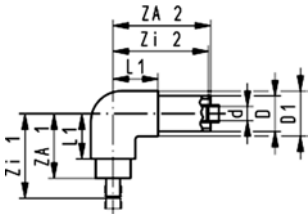
d [mm]	d1 [mm]	PN	Code	kg	z [mm]	L [mm]
25	20	16	723 900 337	0.004	3	19
32	25	16	723 900 341	0.009	4	22
40	20	16	723 900 348	0.023	10	26
40	32	16	723 900 346	0.017	4	26
50	20	16	723 900 355	0.036	15	31
50	32	16	723 900 353	0.050	9	31
50	40	16	723 900 352	0.032	5	31
63	32	16	723 900 360	0.086	16	38
63	50	16	723 900 358	0.061	6	38
75	63	16	723 900 364	0.086	6	44
90	50	16	723 900 372	0.196	20	51
90	75	16	723 900 370	0.146	8	51
110	90	16	723 900 376	0.283	10	61

CONTAIN-IT Plus

PP-H/PE100

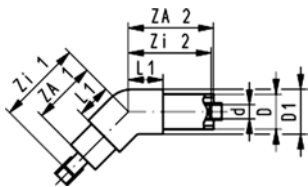
Connection of inner pipe by socket fusion

Elbow 90° PP-H/PE100



d [mm]	D [mm]	PN [bar]	Code	kg	ZA 1 [mm]	ZA 2 [mm]	L1 [mm]	Zi 1 [mm]	Zi 2 [mm]	D1 [mm]
20	50	10 / 16	727 104 106	0.445	105	175	71	141	176	66
25	50	10 / 16	727 104 107	0.467	105	175	71	143	174	66
32	63	10 / 16	727 104 108	0.739	120	190	81	160	187	81
40	75	10 / 16	727 104 109	1.303	145	225	94	188	220	97
50	90	10 / 10	727 104 110	1.780	170	260	110	216	252	113
63	110	10 / 10	727 104 111	2.900	210	310	132	258	296	136
75	125	10 / 10	727 104 112	3.959	225	330	142	277	312	151
90	140	10 / 10	727 104 113	7.440	250	360	178	311	340	196
110	160	10 / 10	727 104 114	7.823	260	375	178	330	349	196

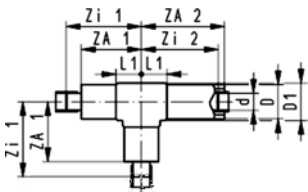
Elbow 45° PP-H/PE100



d [mm]	D [mm]	PN [bar]	Code	kg	ZA 1 [mm]	ZA 2 [mm]	L1 [mm]	Zi 1 [mm]	Zi 2 [mm]	D1 [mm]
20	50	10 / 16	727 154 106	0.423	105	175	56	141	176	66
25	50	10 / 16	727 154 107	0.451	105	175	56	143	174	66
32	63	10 / 16	727 154 108	0.720	120	190	63	160	187	81
40	75	10 / 16	727 154 109	1.298	145	225	71	188	220	97
50	90	10 / 10	727 154 110	1.650	170	260	85	216	252	113
63	110	10 / 10	727 154 111	2.833	210	310	103	258	296	136
75	125	10 / 10	727 154 112	3.881	225	330	107	277	312	151
90	140	10 / 10	727 154 113	6.471	250	360	134	311	340	196
110	160	10 / 10	727 154 114	8.133	260	375	134	330	349	196

Tee 90° equal PP-H/PE100

• T 45° on request

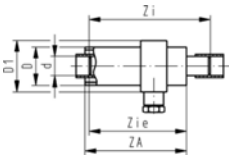


d [mm]	D [mm]	PN [bar]	Code	kg	ZA 1 [mm]	ZA 2 [mm]	L1 [mm]	Zi 1 [mm]	Zi 2 [mm]	D1 [mm]
20	50	10 / 16	727 204 106	0.376	105	175	43	141	176	54
25	50	10 / 16	727 204 107	0.409	105	175	43	143	174	54
32	63	10 / 16	727 204 108	0.696	120	190	50	160	187	67
40	75	10 / 16	727 204 109	1.207	145	225	61	188	220	79
50	90	10 / 10	727 204 110	1.744	170	260	71	216	252	101
63	110	10 / 10	727 204 111	3.051	210	310	80	258	296	119
75	125	10 / 10	727 204 112	5.437	225	330	91	277	312	134
90	140	10 / 10	727 204 113	12.248	250	360	108	311	340	170
110	160	10 / 10	727 204 114	8.389	260	375	108	330	349	170

CONTAIN-IT Plus

Termination fitting PP-H/PE100

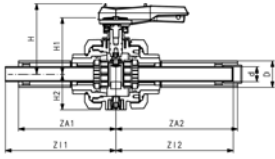
- Sealing in body EPDM



d [mm]	D [mm]	PN [bar]	Code	kg	Za [mm]	Zi [mm]	Zie [mm]	D1 [mm]
20	50	10 / 16	727 964 106	0.282	175	212	176	70
25	50	10 / 16	727 964 107	0.298	175	212	174	70
32	63	10 / 16	727 964 108	0.411	185	222	182	80
40	75	10 / 16	727 964 109	0.607	205	243	200	90
50	90	10 / 10	727 964 110	0.945	250	288	242	110
63	110	10 / 10	727 964 111	1.451	270	304	258	130
75	125	10 / 10	727 964 112	1.927	290	324	274	140
90	140	10 / 10	727 964 113	2.614	310	351	290	160
110	160	10 / 10	727 964 114	3.595	330	374	304	170

CONTAIN-IT Plus

Ball valve type 546 PP-H/PE100 Connections for socket fusion

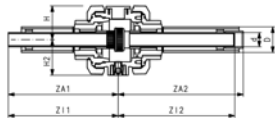


Model:

- Manual operated
- Manual override with ratchet setting
- Pneumatic or electric actuator available separately
- Protective housing PVC-U PN6 / sealing according to inner pipe
- For easy installation and removal

d [mm]	D [mm]	PN [bar]	EPDM Code	FPM Code	kg
20	50	10 / 6	727 239 106	727 239 126	4.500
25	50	10 / 6	727 239 107	727 239 127	7.000
32	63	10 / 6	727 239 108	727 239 128	7.300
40	75	10 / 6	727 239 109	727 239 129	9.800
50	90	10 / 6	727 239 110	727 239 130	11.800
63	110	10 / 6	727 239 111	727 239 131	13.200

d [mm]	ZA 1 [mm]	ZA 2 [mm]	Zi 1 [mm]	Zi 2 [mm]	H [mm]	H1 [mm]	H2 [mm]
20	255	330	284	329	222	182	85
25	255	330	286	326	222	182	85
32	275	355	308	350	234	194	105
40	325	410	360	403	244	210	123
50	340	425	378	415	244	210	123
63	350	480	394	466	244	210	123



Mechanical joint PP-H/PE100 Connections for socket fusion

Model:

- Protective housing PVC-U PN6 / sealing according to inner pipe
- With union PP-H
- For easy installation and removal

d [mm]	D [mm]	PN [bar]	EPDM Code	FPM Code	kg	ZA 1 [mm]	ZA 2 [mm]	Zi 1 [mm]	Zi 2 [mm]	H [mm]	H2 [mm]
20	50	10 / 6	727 240 106	727 240 126	4.200	255	330	284	329	92	85
25	50	10 / 6	727 240 107	727 240 127	6.500	255	330	286	326	92	85
32	63	10 / 6	727 240 108	727 240 128	6.600	275	355	308	350	104	105
40	75	10 / 6	727 240 109	727 240 129	9.300	325	410	360	403	119	123
50	90	10 / 6	727 240 110	727 240 130	10.300	340	425	378	415	119	123
63	110	10 / 6	727 240 111	727 240 131	10.100	350	480	394	466	119	123

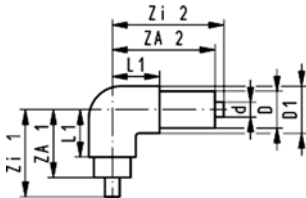
CONTAIN-IT Plus

Fitting PP-H/PE100

Connection of inner pipe by butt fusion

Elbow 90° PP-H/PE100 S5/SDR11

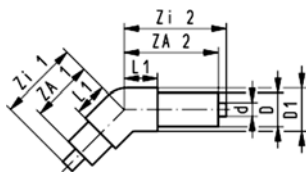
• SDR17 on request



d [mm]	D [mm]	PN [bar]	Code	kg	ZA 1 [mm]	ZA 2 [mm]	L1 [mm]	Zi 1 [mm]	Zi 2 [mm]	D1 [mm]
20	50	10 / 16	727 104 206	0.438	105	175	71	120	190	66
25	50	10 / 16	727 104 207	0.464	105	175	71	120	190	66
32	63	10 / 16	727 104 208	0.720	120	190	81	135	205	81
40	75	10 / 16	727 104 209	1.260	145	225	94	160	240	97
50	90	10 / 10	727 104 210	1.721	170	260	110	185	275	113
63	110	10 / 10	727 104 211	2.794	210	310	132	225	325	136
75	125	10 / 10	727 104 212	3.908	225	330	142	240	345	151
90	140	10 / 10	727 104 213	6.285	250	360	178	265	375	196
110	160	10 / 10	727 104 214	8.253	260	375	178	275	390	196
125	180	10 / 10	727 104 215	10.401	280	400	195	295	415	219
140	200	10 / 10	727 104 216	12.244	285	405	170	300	420	250
160	225	10 / 10	727 104 217	17.492	335	460	205	350	475	280
200	280	10 / 10	727 104 219	24.609	370	500	220	385	515	315
225	315	10 / 10	727 104 220	39.085	350	500	220	365	515	315

Elbow 45° PP-H/PE100 S5/SDR11

• SDR17 on request

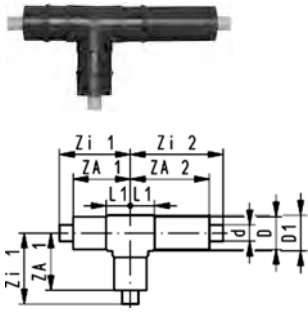


d [mm]	D [mm]	PN [bar]	Code	kg	ZA 1 [mm]	ZA 2 [mm]	L1 [mm]	Zi 1 [mm]	Zi 2 [mm]	D1 [mm]
20	50	10 / 16	727 154 206	0.411	105	175	56	120	190	66
25	50	10 / 16	727 154 207	0.413	105	175	56	120	190	66
32	63	10 / 16	727 154 208	0.704	120	190	63	135	205	81
40	75	10 / 16	727 154 209	1.260	145	225	71	160	240	97
50	90	10 / 10	727 154 210	1.558	170	260	85	185	275	113
63	110	10 / 10	727 154 211	2.718	210	310	103	225	325	136
75	125	10 / 10	727 154 212	3.759	225	330	107	240	345	151
90	140	10 / 10	727 154 213	6.251	250	360	134	265	375	196
110	160	10 / 10	727 154 214	7.825	260	375	134	275	390	196
125	180	10 / 10	727 154 215	7.072	280	400	142	295	415	217
140	200	10 / 10	727 154 216	12.474	285	405	170	300	420	250
160	225	10 / 10	727 154 217	17.683	335	460	205	350	475	280
200	280	10 / 10	727 154 219	25.211	370	500	220	385	515	315
225	315	10 / 10	727 154 220	40.136	350	500	220	365	515	315

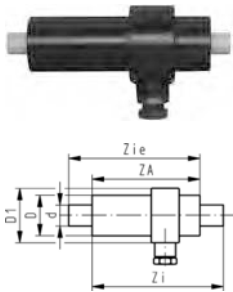
CONTAIN-IT Plus

Tee 90° equal PP-H/PE100 S5/SDR11

- T 45° on request
- SDR17 on request



d [mm]	D [mm]	PN [bar]	Code	kg	ZA 1 [mm]	ZA 2 [mm]	L1 [mm]	Zi 1 [mm]	Zi 2 [mm]	D1 [mm]
20	50	10 / 16	727 204 206	0.365	105	175	43	120	190	54
25	50	10 / 16	727 204 207	0.563	105	175	43	120	190	54
32	63	10 / 16	727 204 208	0.682	120	190	50	135	205	67
40	75	10 / 16	727 204 209	1.704	145	225	61	160	240	79
50	90	10 / 10	727 204 210	2.191	170	260	71	185	275	101
63	110	10 / 10	727 204 211	0.870	210	310	80	225	325	119
75	125	10 / 10	727 204 212	5.277	225	330	91	240	345	134
90	140	10 / 10	727 204 213	11.966	250	360	108	265	375	170
110	160	10 / 10	727 204 214	7.713	260	375	108	275	390	170
125	180	10 / 10	727 204 215	10.947	280	400	157	295	415	190
140	200	10 / 10	727 204 216	17.439	285	405	170	300	420	270
160	225	10 / 10	727 204 217	25.401	335	460	205	350	475	300
200	280	10 / 10	727 204 219	35.769	370	500	220	385	515	325
225	315	10 / 10	727 204 220	56.650	350	500	220	365	515	325



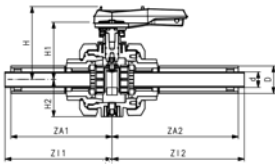
Termination fitting PP-H/PE100 S5/SDR11

- Sealing in body EPDM
- SDR17 on request

d [mm]	D [mm]	PN [bar]	Code	kg	Za [mm]	Zi [mm]	Zie [mm]	D1 [mm]
20	50	10 / 16	727 964 206	0.257	175	190	190	70
25	50	10 / 16	727 964 207	0.267	175	190	190	70
32	63	10 / 16	727 964 208	0.390	185	200	200	80
40	75	10 / 16	727 964 209	0.549	205	220	220	90
50	90	10 / 10	727 964 210	0.909	250	265	265	110
63	110	10 / 10	727 964 211	1.366	270	285	285	130
75	125	10 / 10	727 964 212	1.805	290	305	305	140
90	140	10 / 10	727 964 213	2.377	310	325	325	160
110	160	10 / 10	727 964 214	3.173	330	345	345	170
125	180	10 / 10	727 964 215	2.989	345	360	360	190
140	200	10 / 10	727 964 216	6.358	360	375	375	210
160	225	10 / 10	727 964 217	9.006	390	405	405	230
200	280	10 / 10	727 964 219	10.542	375	390	390	280
225	315	10 / 10	727 964 220	13.903	430	445	445	315

CONTAIN-IT Plus

Ball valve type 546 PP-H/PE100 S5/SDR11 Connections for butt fusion

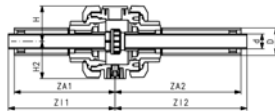


Model:

- Manual operated
- Manual override with ratchet setting
- Pneumatic or electric actuator available separately
- Protective housing PVC-U PN6 / sealing according to inner pipe
- For easy installation and removal

d [mm]	D [mm]	PN [bar]	EPDM Code	FPM Code	kg
20	50	10 / 6	727 239 206	727 239 226	4.500
25	50	10 / 6	727 239 207	727 239 227	7.000
32	63	10 / 6	727 239 208	727 239 228	7.300
40	75	10 / 6	727 239 209	727 239 229	9.800
50	90	10 / 6	727 239 210	727 239 230	11.800
63	110	10 / 6	727 239 211	727 239 231	13.200

d [mm]	ZA 1 [mm]	ZA 2 [mm]	Zi 1 [mm]	Zi 2 [mm]	H [mm]	H1 [mm]	H2 [mm]
20	255	330	270	345	222	182	85
25	255	330	270	345	222	182	85
32	275	355	290	370	234	194	105
40	325	410	340	425	244	210	123
50	340	425	355	440	244	210	123
63	350	480	365	495	244	210	123



Mechanical joint PP-H/PE100 S5/SDR11 Connections for butt fusion

Model:

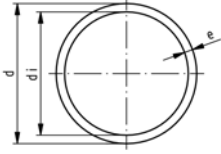
- Protective housing PVC-U PN6 / sealing according to inner pipe
- With union PP-H
- For easy installation and removal

d [mm]	D [mm]	PN [bar]	EPDM Code	FPM Code	kg	ZA 1 [mm]	ZA 2 [mm]	Zi 1 [mm]	Zi 2 [mm]	H [mm]	H2 [mm]
20	50	10 / 6	727 240 206	727 240 226	4.200	255	330	270	345	92	85
25	50	10 / 6	727 240 207	727 240 227	6.500	255	330	270	345	92	85
32	63	10 / 6	727 240 208	727 240 228	6.600	275	355	290	370	104	105
40	75	10 / 6	727 240 209	727 240 229	9.300	325	410	340	425	119	123
50	90	10 / 6	727 240 210	727 240 230	10.300	340	425	355	440	119	123
63	110	10 / 6	727 240 211	727 240 231	10.100	350	480	365	495	119	123

CONTAIN-IT Plus

Inner pipe and connection elements PP-H

Pipes S3,2/SDR7,4 (PN16)

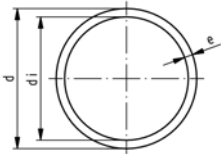


Model:

- Material: Polypropylene (PP-H) DIN 8078
- Dimension: DIN 8077
- Colour: RAL 7032 pebble grey
- Length: Lengths of 5 m
- for socket fusion without stiffeners

d [mm]	PN	Code	e [mm]	di [mm]	
20	16	167 481 028	2.8	14.4	
25	16	167 481 029	3.5	18.0	

PROGEF Standard pipe S5/SDR11 (PN10)



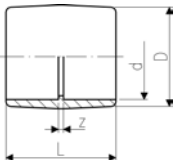
Model:

- Material: PP-H
- Dimension: DIN 8077
- Colour: RAL 7032 pebble grey
- Length: Lengths of 5 m

* In these two sizes, stiffeners Code No. 727 900 006 (20 x 1.9) and 727 900 007 (25 x 2.3), or pipe SDR 7.4 must be used with socket fusion joints.

d [mm]	PN	Code	e [mm]	di [mm]	closest inch	
* 20	10	167 480 711	1.9	16.2	½	
* 25	10	167 480 712	2.3	20.4	¾	
32	10	167 480 713	2.9	26.2	1	
40	10	167 480 714	3.7	32.6	1 ¼	
50	10	167 480 715	4.6	40.8	1 ½	
63	10	167 480 716	5.8	51.4	2	
75	10	167 480 717	6.8	61.4	2 ½	
90	10	167 480 718	8.2	73.6	3	
110	10	167 480 719	10.0	90.0	4	
125	10	167 480 720	11.4	102.2	4 ½	
140	10	167 480 721	12.7	114.6	5	
160	10	167 480 722	14.6	130.8	6	
180	10	167 480 723	16.4	147.2	7	
200	10	167 480 724	18.2	163.6	8	
225	10	167 480 725	20.5	184.0	9	

Sockets equal, PP-H



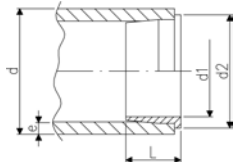
Model:

- Material: PP-H
- * use pipe SDR 7.4

d [mm]	PN	Code	kg	D [mm]	L [mm]	z [mm]	
20	10	727 910 106	0.013	31	35	7	
25	10	727 910 107	0.019	36	39	7	
32	10	727 910 108	0.026	44	43	7	
40	10	727 910 109	0.041	54	48	8	
50	10	727 910 110	0.072	66	54	8	
63	10	727 910 111	0.118	82	62	8	
75	10	727 910 112	0.147	93	70	8	
90	10	727 910 113	0.238	112	81	11	
110	10	727 910 114	0.425	134	96	14	

CONTAIN-IT Plus

PROGEF Standard stiffener

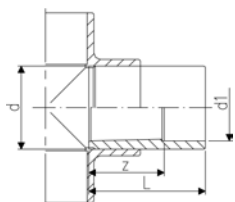
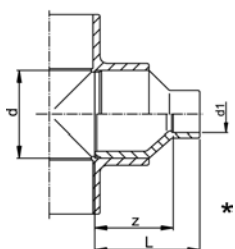


Model:

- Material: PP-H
- Used as support during d20 and d25 socket fusion jointing to prevent the pipe from collapsing during the heating and jointing process.

d [mm]	e [mm]	Code	kg	L [mm]	d1 [mm]	d2 [mm]
20	1,9	727 900 006	0.001	10	14	18
25	2,3	727 900 007	0.004	11	18	23

PROGEF Standard reducer



Model:

- Material: PP-H

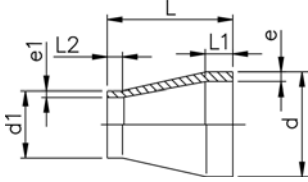
Note:

* Fusion spigot and socket

d [mm]	d1 [mm]	PN	Code	kg	L [mm]	z [mm]
25	20	10	727 910 337	0.012	37	23
32	20	10	727 910 342	0.016	43	29
32	25	10	727 910 341	0.019	43	27
* 40	20	10	727 910 348	0.022	48	34
* 40	25	10	727 910 347	0.025	48	32
40	32	10	727 910 346	0.030	48	30
* 50	20	10	727 910 355	0.034	54	40
* 50	25	10	727 910 354	0.034	54	38
* 50	32	10	727 910 353	0.039	54	36
50	40	10	727 910 352	0.048	54	34
* 63	25	10	727 910 361	0.054	64	46
* 63	32	10	727 910 360	0.062	64	46
* 63	40	10	727 910 359	0.069	64	44
63	50	10	727 910 358	0.083	64	41
75	63	10	727 910 364	0.098	62	35
* 90	63	10	727 910 371	0.170	88	61
90	75	10	727 910 370	0.142	70	39
110	90	10	727 910 376	0.235	81	46

CONTAIN-IT Plus

PROGEF Standard reducer S5/SDR11



Model:

- Material: PP-H
- Conventional butt-welding according to DVS 2207 part 11
- IR = Infrared-(IR Plus®) compatible. Choose fusion parameters: PP-H

¹ Material: PP-R

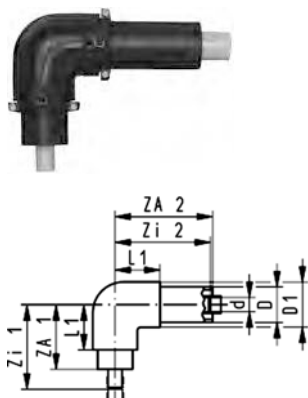
d [mm]	d1 [mm]	FM	Code	kg	L [mm]	L1 [mm]	L2 [mm]	e [mm]	e1 [mm]
25	20	IR	727 908 537	0.007	50	20	20	2.3	1.9
32	20	IR	727 908 542	0.010	50	20	20	2.9	1.9
32	25	IR	727 908 541	0.010	50	20	20	2.9	2.3
40	20	IR	727 908 548	0.016	58	20	23	3.7	1.9
40	32	IR	727 908 546	0.018	55	20	20	3.7	2.9
50	25	IR	727 908 554	0.024	60	20	20	4.6	2.3
50	40	IR	727 908 552	0.030	60	20	20	4.6	3.7
63	32	IR	727 908 560	0.043	65	20	20	5.8	2.9
63	50	IR	727 908 558	0.051	65	20	20	5.8	4.6
75	40	IR	727 908 566	0.062	68	20	20	6.8	3.7
75	63	IR	727 908 564	0.075	65	20	20	6.8	5.8
90	75	IR	727 908 570	0.130	75	22	19	8.2	6.8
110	90	IR	727 908 576	0.225	90	28	30	10.0	8.2
125	110	IR	727 908 580	0.335	100	32	30	11.4	10.0
140	125	IR	727 908 584	0.462	110	34	30	12.7	11.4
160	110	IR	727 908 590	0.586	120	39	27	14.6	10.0
160	140	IR	727 908 588	0.647	120	40	35	14.6	12.7
180	90	IR	727 908 978	0.968	157	45	22	16.4	8.8
180	125	IR	727 908 976	0.890	136	45	32	16.4	11.4
180	160	IR	727 908 974	1.031	136	45	35	16.4	14.6
200	180	IR	727 908 979	1.350	151	50	45	18.2	16.4
225	110	IR	727 908 595	1.485	160	55	35	20.5	10.0
225	160	IR	727 908 596	1.563	160	55	40	20.5	14.6
225	200	IR	727 908 597	1.723	160	55	50	20.5	18.2

CONTAIN-IT Plus

PE/PE100

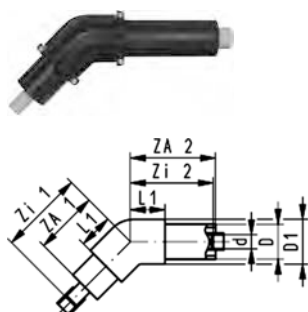
Connection of inner pipe by socket fusion

Elbow 90° PE80/PE100



d [mm]	D [mm]	PN [bar]	Code	kg	ZA 1 [mm]	ZA 2 [mm]	L1 [mm]	Zi 1 [mm]	Zi 2 [mm]	D1 [mm]
20	50	10 / 16	733 104 106	0.412	105	175	71	141	176	66
25	50	10 / 16	733 104 107	0.470	105	175	71	143	174	66
32	63	10 / 16	733 104 108	0.743	120	190	81	160	187	81
40	75	10 / 16	733 104 109	1.317	145	225	94	188	220	97
50	90	10 / 10	733 104 110	1.794	170	260	110	216	252	113
63	110	10 / 10	733 104 111	2.918	210	310	132	258	296	136
75	125	10 / 10	733 104 112	4.243	225	330	142	276	312	151
90	140	10 / 10	733 104 113	7.659	250	360	178	310	340	196
110	160	10 / 10	733 104 114	8.128	260	375	178	330	349	196

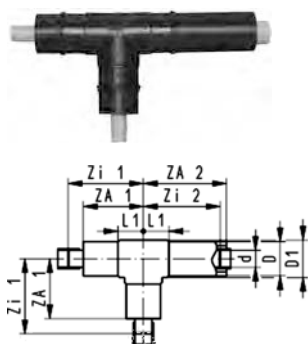
Elbow 45° PE80/PE100



d [mm]	D [mm]	PN [bar]	Code	kg	ZA 1 [mm]	ZA 2 [mm]	L1 [mm]	Zi 1 [mm]	Zi 2 [mm]	D1 [mm]
20	50	10 / 16	733 154 106	0.411	105	175	56	141	176	66
25	50	10 / 16	733 154 107	0.456	105	175	56	143	174	66
32	63	10 / 16	733 154 108	0.731	120	190	63	160	187	81
40	75	10 / 16	733 154 109	1.308	145	225	71	188	220	97
50	90	10 / 10	733 154 110	1.674	170	260	85	216	252	113
63	110	10 / 10	733 154 111	2.852	210	310	103	258	296	136
75	125	10 / 10	733 154 112	4.250	225	330	107	276	312	151
90	140	10 / 10	733 154 113	6.520	250	360	134	310	340	196
110	160	10 / 10	733 154 114	8.259	260	375	134	330	349	196

Tee 90° equal PE80/PE100

• T 45° on request

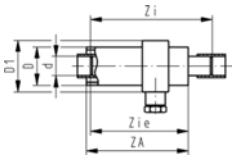


d [mm]	D [mm]	PN [bar]	Code	kg	ZA 1 [mm]	ZA 2 [mm]	L1 [mm]	Zi 1 [mm]	Zi 2 [mm]	D1 [mm]
20	50	10 / 16	733 204 106	0.374	105	175	43	141	176	54
25	50	10 / 16	733 204 107	0.410	105	175	43	143	174	54
32	63	10 / 16	733 204 108	0.691	120	190	50	160	187	67
40	75	10 / 16	733 204 109	1.216	145	225	61	188	220	79
50	90	10 / 10	733 204 110	1.696	170	260	71	216	252	101
63	110	10 / 10	733 204 111	3.050	210	310	80	258	296	119
75	125	10 / 10	733 204 112	4.183	225	330	91	276	312	134
90	140	10 / 10	733 204 113	12.327	250	360	108	310	340	170
110	160	10 / 10	733 204 114	8.493	260	375	108	330	349	170

CONTAIN-IT Plus

Termination Fitting HD PE80 / PE100

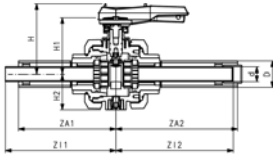
- Sealing in body EPDM



d [mm]	D [mm]	PN [bar]	Code	kg	Za [mm]	Zi [mm]	Zie [mm]	D1 [mm]
20	50	10 / 10	733 964 106	0.291	175	212	176	70
25	50	10 / 10	733 964 107	0.278	175	212	174	70
32	63	10 / 10	733 964 108	0.417	185	222	182	80
40	75	10 / 10	733 964 109	0.608	205	243	200	90
50	90	10 / 10	733 964 110	0.957	250	288	242	110
63	110	10 / 10	733 964 111	1.469	270	304	258	130
75	125	10 / 10	733 964 112	1.919	290	324	274	140
90	140	10 / 10	733 964 113	2.654	310	351	290	160
110	160	10 / 10	733 964 114	3.607	330	374	304	170

CONTAIN-IT Plus

Ball valve type 546 PVC-U/PE100 Connections for socket fusion



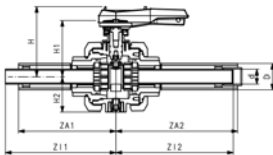
Model:

- Ball valve PVC-U with spigots PE
- Manual operated
- Manual override with ratchet setting
- Pneumatic or electric actuator available separately
- Protective housing PVC-U PN6 / sealing according to inner pipe
- For easy installation and removal

d [mm]	D [mm]	PN [bar]	EPDM Code	FPM Code	kg
20	50	10 / 6	733 239 106	733 239 126	4.907
25	50	10 / 6	733 239 107	733 239 127	7.000
32	63	10 / 6	733 239 108	733 239 128	7.300
40	75	10 / 6	733 239 109	733 239 129	9.800
50	90	10 / 6	733 239 110	733 239 130	11.800
63	110	10 / 6	733 239 111	733 239 131	13.200

d [mm]	ZA 1 [mm]	ZA 2 [mm]	Zi 1 [mm]	Zi 2 [mm]	H [mm]	H1 [mm]	H2 [mm]
20	255	330	284	329	222	182	85
25	255	330	286	326	222	182	85
32	275	355	308	350	234	194	105
40	325	410	360	403	244	210	123
50	340	425	378	415	244	210	123
63	350	480	394	466	244	210	123

Ball valve type 546 PP-H/PE100 Connections for socket fusion



Model:

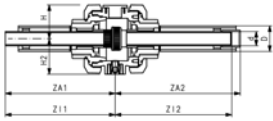
- Ball valve PP-H with spigots PE
- Manual operated
- Manual override with ratchet setting
- Pneumatic or electric actuator available separately
- Protective housing PVC-U PN6 / sealing according to inner pipe
- For easy installation and removal

d [mm]	D [mm]	PN [bar]	EPDM Code	FPM Code	kg
20	50	10 / 6	733 239 156	733 239 176	4.500
25	50	10 / 6	733 239 157	733 239 177	7.000
32	63	10 / 6	733 239 158	733 239 178	7.300
40	75	10 / 6	733 239 159	733 239 179	9.800
50	90	10 / 6	733 239 160	733 239 180	11.800
63	110	10 / 6	733 239 161	733 239 181	13.200

d [mm]	ZA 1 [mm]	ZA 2 [mm]	Zi 1 [mm]	Zi 2 [mm]	H [mm]	H1 [mm]	H2 [mm]
20	255	330	284	329	222	182	85
25	255	330	286	326	222	182	85
32	275	355	308	350	234	194	105
40	325	410	360	403	244	210	123
50	340	425	378	415	244	210	123
63	350	480	394	466	244	210	123

CONTAIN-IT Plus

Mechanical joint PE/PE100 Connections for socket fusion



Model:

- Protective housing PVC-U PN6 / sealing according to inner pipe
- With union PE
- For easy installation and removal

d [mm]	D [mm]	PN [bar]	EPDM Code	FPM Code	kg	ZA 1 [mm]	ZA 2 [mm]	Zi 1 [mm]	Zi 2 [mm]	H [mm]	H2 [mm]
20	50	10 / 6	733 240 106	733 240 126	4.200	255	330	284	329	92	85
25	50	10 / 6	733 240 107	733 240 127	6.500	255	330	286	326	92	85
32	63	10 / 6	733 240 108	733 240 128	6.600	275	355	308	350	104	105
40	75	10 / 6	733 240 109	733 240 129	9.300	325	410	360	403	119	123
50	90	10 / 6	733 240 110	733 240 130	10.300	340	425	378	415	119	123
63	110	10 / 6	733 240 111	733 240 131	10.100	350	480	394	466	119	123

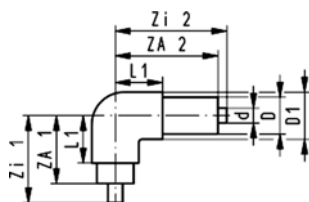
CONTAIN-IT Plus

PE/PE100

Connection of inner pipe by butt fusion

Elbow 90° PE100/PE100 S5/SDR11

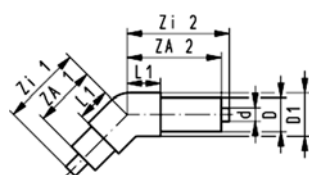
• SDR17 on request



d [mm]	D [mm]	PN [bar]	Code	kg	ZA 1 [mm]	ZA 2 [mm]	L1 [mm]	Zi 1 [mm]	Zi 2 [mm]	D1 [mm]
20	50	16 / 16	753 104 206	0.441	105	175	71	120	190	66
25	50	16 / 16	753 104 207	0.452	105	175	71	120	190	66
32	63	16 / 16	753 104 208	0.721	120	190	81	135	205	81
40	75	16 / 16	753 104 209	1.271	145	225	94	160	240	97
50	90	16 / 10	753 104 210	1.635	170	260	110	185	275	113
63	110	16 / 10	753 104 211	2.801	210	310	132	225	325	136
75	125	16 / 10	753 104 212	3.942	225	330	142	240	345	151
90	140	16 / 10	753 104 213	7.328	250	360	178	265	375	196
110	160	16 / 10	753 104 214	7.916	260	375	178	275	390	196
125	180	16 / 10	753 104 215	7.321	280	400	195	295	415	219
140	200	16 / 10	753 104 216	12.244	285	405	170	300	420	250
160	225	16 / 10	753 104 217	17.492	335	460	205	350	475	280
200	280	16 / 10	753 104 219	24.609	370	500	220	385	515	315
225	315	16 / 10	753 104 220	39.085	350	500	220	365	515	315

Elbow 45° PE100/PE100 S5/SDR11

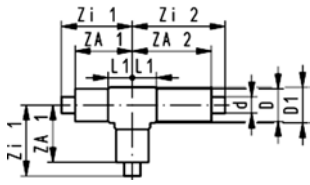
• SDR17 on request



d [mm]	D [mm]	PN [bar]	Code	kg	ZA 1 [mm]	ZA 2 [mm]	L1 [mm]	Zi 1 [mm]	Zi 2 [mm]	D1 [mm]
20	50	16 / 16	753 154 206	0.411	105	175	56	120	190	66
25	50	16 / 16	753 154 207	0.418	105	175	56	120	190	66
32	63	16 / 16	753 154 208	0.713	120	190	63	135	205	81
40	75	16 / 16	753 154 209	1.258	145	225	71	160	240	97
50	90	16 / 10	753 154 210	1.584	170	260	85	185	275	113
63	110	16 / 10	753 154 211	2.729	210	310	103	225	325	136
75	125	16 / 10	753 154 212	4.084	225	330	107	240	345	151
90	140	16 / 10	753 154 213	7.158	250	360	134	265	375	196
110	160	16 / 10	753 154 214	7.739	260	375	134	275	390	196
125	180	16 / 10	753 154 215	7.072	280	400	195	295	415	219
140	200	16 / 10	753 154 216	12.474	285	405	170	300	420	250
160	225	16 / 10	753 154 217	17.683	335	460	205	350	475	280
200	280	16 / 10	753 154 219	25.211	370	500	220	385	515	315
225	315	16 / 10	753 154 220	40.136	350	500	220	365	515	315

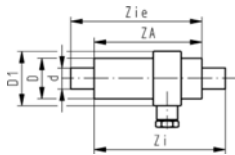
CONTAIN-IT Plus

Tee 90° equal PE100/PE100 S5/SDR11



- T 45° on request
- SDR17 on request

d [mm]	D [mm]	PN [bar]	Code	kg	ZA 1 [mm]	ZA 2 [mm]	L1 [mm]	Zi 1 [mm]	Zi 2 [mm]	D1 [mm]
20	50	16 / 16	753 204 206	0.530	105	175	43	120	190	54
25	50	16 / 16	753 204 207	0.568	105	175	43	120	190	54
32	63	16 / 16	753 204 208	0.687	120	190	50	135	205	67
40	75	16 / 16	753 204 209	1.183	145	225	61	160	240	79
50	90	16 / 10	753 204 210	2.262	170	260	71	185	275	101
63	110	16 / 10	753 204 211	3.829	210	310	80	225	325	119
75	125	16 / 10	753 204 212	4.195	225	330	91	240	345	134
90	140	16 / 10	753 204 213	6.590	250	360	108	265	375	170
110	160	16 / 10	753 204 214	11.907	260	375	108	275	390	170
125	180	16 / 10	753 204 215	10.947	280	400	157	295	415	190
140	200	16 / 10	753 204 216	17.439	285	405	170	300	420	270
160	225	16 / 10	753 204 217	25.401	335	460	205	350	475	300
200	280	16 / 10	753 204 219	35.769	370	500	220	385	515	325
225	315	16 / 10	753 204 220	56.650	350	500	220	365	515	325



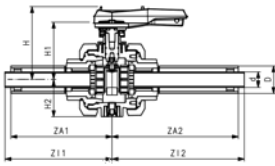
Termination fitting PE100/PE100 S5/SDR11

- Sealing in body EPDM
- SDR17 on request

d [mm]	D [mm]	PN [bar]	Code	kg	Za [mm]	Zi [mm]	Zie [mm]	D1 [mm]
20	50	16 / 16	753 964 206	0.274	175	190	190	70
25	50	16 / 16	753 964 207	0.268	175	190	190	70
32	63	16 / 16	753 964 208	0.398	185	200	200	80
40	75	16 / 16	753 964 209	0.554	205	220	220	90
50	90	16 / 10	753 964 210	0.946	250	265	265	110
63	110	16 / 10	753 964 211	1.376	270	285	285	130
75	125	16 / 10	753 964 212	1.821	290	305	305	140
90	140	16 / 10	753 964 213	2.412	310	325	325	160
110	160	16 / 10	753 964 214	3.267	330	345	345	170
125	180	16 / 10	753 964 215	4.346	345	360	360	190
140	200	16 / 10	753 964 216	6.358	360	375	375	210
160	225	16 / 10	753 964 217	7.194	390	405	405	230
200	280	16 / 10	753 964 219	10.542	375	390	390	280
225	315	16 / 10	753 964 220	13.903	430	445	445	315

CONTAIN-IT Plus

Ball valve type 546 PVC-U/PE100 S5/SDR11 Connections for butt fusion



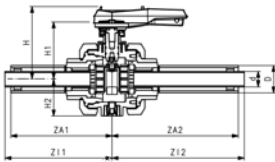
Model:

- Ball valve PVC-U with spigots PE
- Manual operated
- Manual override with ratchet setting
- Pneumatic or electric actuator available separately
- Protective housing PVC-U PN6 / sealing according to inner pipe
- For easy installation and removal

d [mm]	D [mm]	PN [bar]	EPDM Code	FPM Code	kg
20	50	16 / 6	753 239 206	753 239 226	4.500
25	50	16 / 6	753 239 207	753 239 227	7.000
32	63	16 / 6	753 239 208	753 239 228	7.300
40	75	16 / 6	753 239 209	753 239 229	9.800
50	90	16 / 6	753 239 210	753 239 230	11.800
63	110	16 / 6	753 239 211	753 239 231	13.200

d [mm]	ZA 1 [mm]	ZA 2 [mm]	Zi 1 [mm]	Zi 2 [mm]	H [mm]	H1 [mm]	H2 [mm]
20	255	330	270	345	222	182	85
25	255	330	270	345	222	182	85
32	275	355	290	370	234	194	105
40	325	410	340	425	244	210	123
50	340	425	355	440	244	210	123
63	350	480	365	495	244	210	123

Ball valve type 546 PP-H/PE100 S5/SDR11 Connections for butt fusion



Model:

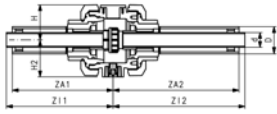
- Ball valve PP-H with spigots PE
- Manual operated
- Manual override with ratchet setting
- Pneumatic or electric actuator available separately
- Protective housing PVC-U PN6 / sealing according to inner pipe
- For easy installation and removal

d [mm]	D [mm]	PN [bar]	EPDM Code	FPM Code	kg
20	50	10 / 6	753 239 256	753 239 276	4.500
25	50	10 / 6	753 239 257	753 239 277	7.000
32	63	10 / 6	753 239 258	753 239 278	7.300
40	75	10 / 6	753 239 259	753 239 279	9.800
50	90	10 / 6	753 239 260	753 239 280	11.800
63	110	10 / 6	753 239 261	753 239 281	13.200

d [mm]	ZA 1 [mm]	ZA 2 [mm]	Zi 1 [mm]	Zi 2 [mm]	H [mm]	H1 [mm]	H2 [mm]
20	255	330	270	345	222	182	85
25	255	330	270	345	222	182	85
32	275	355	290	370	234	194	105
40	325	410	340	425	244	210	123
50	340	425	355	440	244	210	123
63	350	480	365	495	244	210	123

CONTAIN-IT Plus

Mechanical joint PE/PE100 S5/SDR11 Connections for butt fusion



Model:

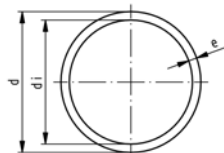
- Protective housing PVC-U PN6 / sealing according to inner pipe
- With union PE
- For easy installation and removal

d [mm]	D [mm]	PN [bar]	EPDM Code	FPM Code	kg	ZA 1 [mm]	ZA 2 [mm]	Zi 1 [mm]	Zi 2 [mm]	H [mm]	H2 [mm]
20	50	10 / 6	753 240 206	753 240 226	4.200	255	330	270	345	92	85
25	50	10 / 6	753 240 207	753 240 227	6.500	255	330	270	345	92	85
32	63	10 / 6	753 240 208	753 240 228	6.600	275	355	290	370	104	105
40	75	10 / 6	753 240 209	753 240 229	9.300	325	410	340	425	119	123
50	90	10 / 6	753 240 210	753 240 230	10.300	340	425	355	440	119	123
63	110	10 / 6	753 240 211	753 240 231	10.100	350	480	365	495	119	123

CONTAIN-IT Plus

Inner pipe and connection elements PE

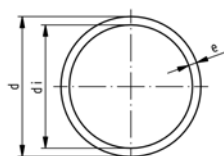
Pipes, PE100 S3,2/SDR7,4



Model:

- Dimension: DIN 8074
- Colour: RAL 9011 graphite black
- Length: 5 m
- for socket fusion without stiffeners
- Not suitable for butt fusion

d [mm]	Code	CFM	kg	e [mm]	di [mm]
20	193 017 206	253 98 87	0.156	2,8	14.4
25	193 017 207	253 98 88	0.243	3,5	18.0



Pipe PE100 S5/SDR11

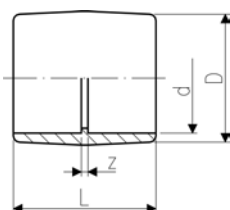
Model:

- Material: PE 100, Polyethylene
- Colour: RAL 9011 graphite black
- Dimension: DIN 8074
- Pipe length: 5m, with plain ends

* In these two sizes, stiffeners Code No. 733 900 006 (20 x 1,9) and 733 900 007 (25 x 2.3) must be used with socket fusion joints.

d [mm]	PN	Code	CFM	kg	e [mm]	di [mm]
* 20	16	193 017 156	253 98 66	0.113	1,9	16.2
* 25	16	193 017 157	253 98 67	0.173	2,3	20.4
32	16	193 017 158	253 98 68	0.274	2,9	26.2
40	16	193 017 159	253 98 69	0.434	3,7	32.6
50	16	193 017 160	253 98 71	0.673	4,6	40.8
63	16	193 017 161	253 98 72	1.060	5,8	51.4
75	16	193 017 162	253 98 73	1.480	6,8	61.4
90	16	193 017 163	253 98 74	2.140	8,2	73.6
110	16	193 017 164	253 98 75	3.180	10,0	90.0
125	16	193 017 165	253 98 76	4.120	11,4	102.8
140	16	193 017 166	253 98 77	5.130	12,7	114.6
160	16	193 017 167	253 98 78	6.740	14,6	130.8
180	16	193 017 168	253 98 79	8.510	16,4	147.2
200	16	193 017 169	253 98 81	10.500	18,2	163.6
225	16	193 017 170	253 98 82	13.300	20,5	184.0

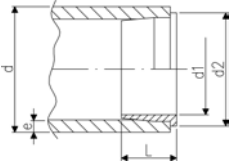
Sockets equal, PE80



d [mm]	PN	Code	kg	D [mm]	L [mm]	z [mm]
20	10	733 910 106	0.014	31	35	7
25	10	733 910 107	0.018	36	39	7
32	10	733 910 108	0.027	44	43	7
40	10	733 910 109	0.043	54	48	8
50	10	733 910 110	0.074	66	54	8
63	10	733 910 111	0.124	82	62	8
75	10	733 910 112	0.152	93	70	8
90	10	733 910 113	0.234	112	81	11
110	10	733 910 114	0.419	134	96	14

CONTAIN-IT Plus

Stiffener PE100

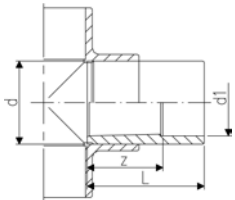
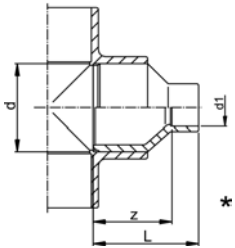


Model:

- Material: PE100
- Used as support during d20 and d25 socket fusion jointing to prevent the pipe from collapsing during the heating and jointing process.

d [mm]	Code	CFM	kg	L [mm]	e [mm]	d1 [mm]	D2 [mm]	d2 [mm]
20	733 900 006	253 98 89	0.001	10	1,9	14	18	18
25	733 900 007	253 98 91	0.001	11	2,3	18	22	23

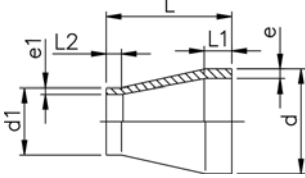
Reducer PE80



d [mm]	d1 [mm]	PN	Code	kg	L [mm]	z [mm]
25	20	10	733 910 337	0.013	39	23
32	25	10	733 910 341	0.021	43	27
* 40	20	10	733 910 348	0.023	48	34
* 40	25	10	733 910 347	0.027	48	32
40	32	10	733 910 346	0.032	48	30
* 50	32	10	733 910 353	0.042	54	36
50	40	10	733 910 352	0.049	54	34
* 63	20	10	733 910 362	0.057	64	50
* 63	25	10	733 910 361	0.060	64	48
* 63	32	10	733 910 360	0.064	64	46
* 63	40	10	733 910 359	0.070	64	44
63	50	10	733 910 358	0.086	64	41
75	63	10	733 910 364	0.103	62	35
* 90	63	10	733 910 371	0.180	88	62
90	75	10	733 910 370	0.144	70	39
110	90	10	733 910 376	0.254	81	45

CONTAIN-IT Plus

Reducer PE100 SDR11



Model:

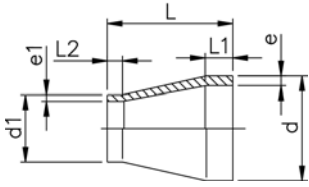
- Conventional butt-welding according to DVS 2207 part 1
- IR = Infrared-(IR Plus®) compatible. Choose fusion parameters: PE100
- Up to d 315 injection moulded, above machined

d [mm]	d1 [mm]	FM	Code	CFM	kg
1 25	20	IR	753 908 637	254 11 03	0.008
1 32	20	IR	753 908 642	254 11 05	0.010
1 32	25	IR	753 908 641	254 11 04	0.006
1 40	20	IR	753 908 648	254 11 08	0.017
1 40	25	IR	753 908 647	254 11 07	0.017
1 40	32	IR	753 908 646	254 11 06	0.019
1 50	25	IR	753 908 654	254 11 12	0.025
1 50	32	IR	753 908 653	254 11 11	0.026
1 50	40	IR	753 908 652	254 11 09	0.032
1 63	32	IR	753 908 660	254 11 15	0.046
1 63	40	IR	753 908 659	254 11 14	0.051
1 63	50	IR	753 908 658	254 11 13	0.056
1 75	40	IR	753 908 666	254 11 18	0.070
1 75	50	IR	753 908 665	254 11 17	0.074
1 75	63	IR	753 908 664	254 11 16	0.081
1 90	63	IR	753 908 671	254 11 21	0.126
1 90	75	IR	753 908 670	254 11 19	0.132
1 110	75	IR	753 908 677	254 11 23	0.219
1 110	90	IR	753 908 676	254 11 22	0.240
2 125	110	IR	753 908 680	254 11 24	0.350
2 140	110	IR	753 908 685	254 11 26	0.437
2 140	125	IR	753 908 684	254 11 25	0.474
2 160	110	IR	753 908 690	254 11 28	0.612
2 160	140	IR	753 908 688	254 11 27	0.674
2 200	160	IR	753 908 692	254 11 29	1.247
2 225	110	IR	753 908 695	254 11 31	1.559
2 225	160	IR	753 908 696	254 11 32	1.643
2 225	200	IR	753 908 697	254 11 33	1.844

d [mm]	d1 [mm]	L [mm]	L1 [mm]	L2 [mm]	e [mm]	e1 [mm]	PF
1 25	20	50	20	18	2,3	1,9	2 68 240 011
1 32	20	50	20	18	2,9	1,9	2 68 240 011
1 32	25	50	20	18	2,9	2,3	2 68 240 011
1 40	20	58	20	20	3,7	1,9	2 68 240 011
1 40	25	55	20	18	3,7	2,3	2 68 240 011
1 40	32	55	20	18	3,7	2,9	2 68 240 011
1 50	25	60	20	18	4,6	2,3	2 68 240 011
1 50	32	60	20	18	4,6	2,9	2 68 240 011
1 50	40	60	20	18	4,6	3,7	2 68 240 011
1 63	32	65	20	18	5,8	2,9	2 68 240 011
1 63	40	65	20	18	5,8	3,7	2 68 240 011
1 63	50	65	20	18	5,8	4,6	2 68 240 011
1 75	40	68	20	20	6,8	3,7	2 68 240 011
1 75	50	65	20	18	6,8	4,6	2 68 240 011
1 75	63	65	20	18	6,8	5,8	2 68 240 011
1 90	63	75	21	17	8,2	5,8	2 68 240 011
1 90	75	75	22	17	8,2	6,8	2 68 240 011
1 110	75	90	28	17	10,0	6,8	2 68 240 011
1 110	90	90	28	20	10,0	8,2	2 68 240 011
2 125	110	100	32	26	11,4	10,0	2 68 240 005
2 140	110	110	35	28	12,7	10,0	2 68 240 005
2 140	125	110	35	28	12,7	11,4	2 68 240 005
2 160	110	120	40	25	14,6	10,0	2 68 240 005
2 160	140	120	40	33	14,6	12,7	2 68 240 005
2 200	160	150	50	35	18,2	14,6	2 68 240 005

table continued next page

CONTAIN-IT Plus



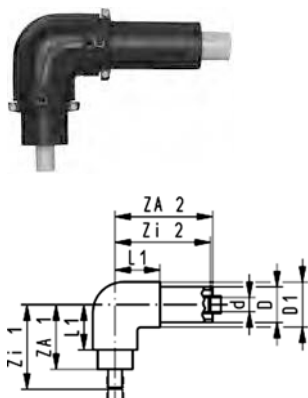
d [mm]	d1 [mm]	L [mm]	L1 [mm]	L2 [mm]	e [mm]	e1 [mm]	PF
2 225	110	171	55	45	20,5	10,0	2 68 240 005
2 225	160	160	55	37	20,5	14,6	2 68 240 005
2 225	200	160	55	48	20,5	18,2	2 68 240 005

CONTAIN-IT Plus

PVDF/PE100

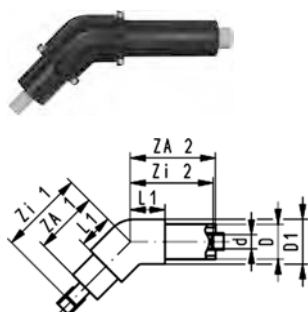
Connection of inner pipe by socket fusion

Elbow 90° PVDF/PE100



d [mm]	D [mm]	PN [bar]	Code	kg	ZA 1 [mm]	ZA 2 [mm]	L1 [mm]	Zi 1 [mm]	Zi 2 [mm]	D1 [mm]
20	50	16 / 16	735 104 106	0.472	105	175	71	141	176	66
25	50	16 / 16	735 104 107	0.507	105	175	71	143	174	66
32	63	16 / 16	735 104 108	0.809	120	190	81	160	187	81
40	75	16 / 16	735 104 109	1.391	145	225	94	188	220	97
50	90	16 / 10	735 104 110	1.902	170	260	110	216	252	113
63	110	16 / 10	735 104 111	2.986	210	310	132	260	298	136

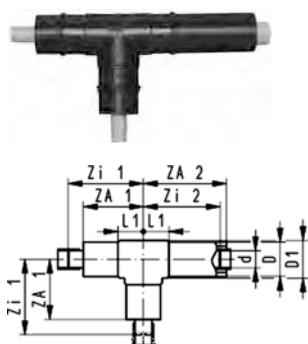
Elbow 45° PVDF/PE100



d [mm]	D [mm]	PN [bar]	Code	kg	ZA 1 [mm]	ZA 2 [mm]	L1 [mm]	Zi 1 [mm]	Zi 2 [mm]	D1 [mm]
20	50	16 / 16	735 154 106	0.458	105	175	56	141	176	66
25	50	16 / 16	735 154 107	0.491	105	175	56	143	174	66
32	63	16 / 16	735 154 108	0.797	120	190	63	160	187	81
40	75	16 / 16	735 154 109	1.374	145	225	71	188	220	97
50	90	16 / 10	735 154 110	1.793	170	260	85	216	252	113
63	110	16 / 10	735 154 111	2.921	210	310	103	260	298	136

Tee 90° equal PVDF/PE100

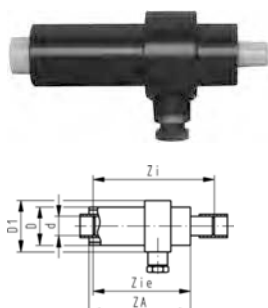
• T 45° on request



d [mm]	D [mm]	PN [bar]	Code	kg	ZA 1 [mm]	ZA 2 [mm]	L1 [mm]	Zi 1 [mm]	Zi 2 [mm]	D1 [mm]
20	50	16 / 16	735 204 106	0.423	105	175	43	141	176	54
25	50	16 / 16	735 204 107	0.453	105	175	43	143	174	54
32	63	16 / 16	735 204 108	0.799	120	190	50	160	187	67
40	75	16 / 16	735 204 109	1.868	145	225	61	188	220	79
50	90	16 / 10	735 204 110	2.510	170	260	71	216	252	101
63	110	16 / 10	735 204 111	3.020	210	310	80	260	298	119

Termination fitting PVDF/PE100

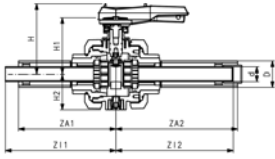
• Sealing in body EPDM



d [mm]	D [mm]	PN [bar]	Code	kg	Za [mm]	Zi [mm]	Zi e [mm]	D1 [mm]
20	50	16 / 10	735 964 106	0.301	175	212	176	70
25	50	16 / 10	735 964 107	0.315	175	212	174	70
32	63	16 / 10	735 964 108	0.463	185	222	182	80
40	75	16 / 10	735 964 109	0.668	205	243	200	90
50	90	16 / 10	735 964 110	1.031	250	288	242	110
63	110	16 / 10	735 964 111	1.511	270	308	258	130

CONTAIN-IT Plus

Ball valve type 546 PVDF/PE100 Connections for socket fusion

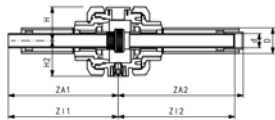


Model:

- Manual operated
- Manual override with ratchet setting
- Pneumatic or electric actuator available separately
- Protective housing PVC-U PN6 / sealing according to inner pipe
- For easy installation and removal

d [mm]	D [mm]	PN [bar]	FPM Code	kg	ZA 1 [mm]	ZA 2 [mm]	Zi 1 [mm]	Zi 2 [mm]	H [mm]	H1 [mm]	H2 [mm]
20	50	16 / 6	735 239 126	4.500	255	330	284	329	222	182	85
25	50	16 / 6	735 239 127	7.000	255	330	286	326	222	182	85
32	63	16 / 6	735 239 128	7.300	275	355	308	350	234	194	105
40	75	16 / 6	735 239 129	9.800	325	410	360	403	244	210	123
50	90	16 / 6	735 239 130	11.800	340	425	378	415	244	210	123
63	110	16 / 6	735 239 131	13.200	350	480	394	466	244	210	123

Mechanical joint PVDF/PE100 Connections for socket fusion



Model:

- Protective housing PVC-U PN6 / sealing according to inner pipe
- With union PVDF
- For easy installation and removal

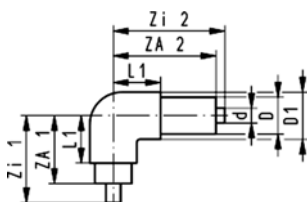
d [mm]	D [mm]	PN [bar]	FPM Code	kg	ZA 1 [mm]	ZA 2 [mm]	Zi 1 [mm]	Zi 2 [mm]	H [mm]	H2 [mm]
20	50	16 / 6	735 240 126	4.200	255	330	284	329	92	85
25	50	16 / 6	735 240 127	6.500	255	330	286	326	92	85
32	63	16 / 6	735 240 128	6.600	275	355	308	350	104	105
40	75	16 / 6	735 240 129	9.300	325	410	360	403	119	123
50	90	16 / 6	735 240 130	10.300	340	425	378	415	119	123
63	110	16 / 6	735 240 131	10.100	350	480	394	466	119	123

CONTAIN-IT Plus

PVDF/PE100

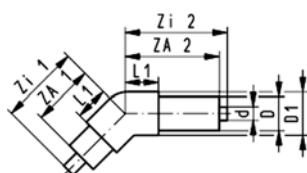
Connection of inner pipe by butt fusion

Elbow 90° PVDF/PE100



d [mm]	D [mm]	PN [bar]	Code	kg	ZA 1 [mm]	ZA 2 [mm]	L1 [mm]	Zi 1 [mm]	Zi 2 [mm]	D1 [mm]
20	50	16 / 16	735 104 206	0.474	105	175	71	120	190	66
25	50	16 / 16	735 104 207	0.503	105	175	71	120	190	66
32	63	16 / 16	735 104 208	0.755	120	190	81	135	205	81
40	75	16 / 16	735 104 209	1.320	145	225	94	160	240	97
50	90	16 / 10	735 104 210	1.711	170	260	110	185	275	113
63	110	16 / 10	735 104 211	2.849	210	310	132	225	325	136
75	125	16 / 10	735 104 212	4.262	225	330	142	240	345	151
90	140	16 / 10	735 104 213	7.578	250	360	178	265	375	196
110	160	16 / 10	735 104 214	7.951	260	375	178	275	390	196
125	180	10 / 10	735 104 265	7.321	280	400	195	295	415	219
140	200	10 / 10	735 104 266	12.244	285	405	170	300	420	250
160	225	10 / 10	735 104 267	17.492	335	460	205	350	475	280
200	280	10 / 10	735 104 269	24.609	370	500	220	385	515	315
225	315	10 / 10	735 104 270	39.085	350	500	220	365	515	315

Elbow 45° PVDF/PE100

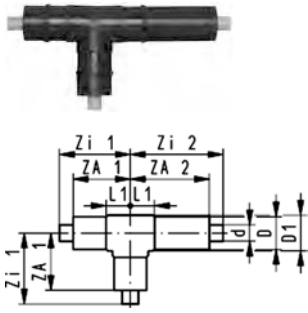


d [mm]	D [mm]	PN [bar]	Code	kg	ZA 1 [mm]	ZA 2 [mm]	L1 [mm]	Zi 1 [mm]	Zi 2 [mm]	D1 [mm]
20	50	16 / 16	735 154 206	0.445	105	175	56	120	190	66
25	50	16 / 16	735 154 207	0.452	105	175	56	120	190	66
32	63	16 / 16	735 154 208	0.755	120	190	63	135	205	81
40	75	16 / 16	735 154 209	1.309	145	225	71	160	240	97
50	90	16 / 10	735 154 210	1.703	170	260	85	185	275	113
63	110	16 / 10	735 154 211	2.764	210	310	103	225	325	136
75	125	16 / 10	735 154 212	3.832	225	330	107	240	345	151
90	140	16 / 10	735 154 213	7.460	250	360	134	265	375	196
110	160	16 / 10	735 154 214	7.741	260	375	134	275	390	196
125	180	10 / 10	735 154 265	7.072	280	400	142	295	415	217
140	200	10 / 10	735 154 266	12.474	285	405	170	300	420	250
160	225	10 / 10	735 154 267	16.415	335	460	205	350	475	280
200	280	10 / 10	735 154 269	25.211	370	500	220	385	515	315
225	315	10 / 10	735 154 270	40.136	350	500	220	365	515	315

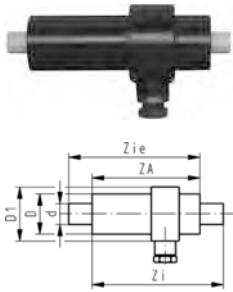
CONTAIN-IT Plus

Tee 90° equal PVDF/PE100

- T 45° on request



d [mm]	D [mm]	PN [bar]	Code	kg	ZA 1 [mm]	ZA 2 [mm]	L1 [mm]	Zi 1 [mm]	Zi 2 [mm]	D1 [mm]
20	50	16 / 16	735 204 206	0.573	105	175	43	120	190	54
25	50	16 / 16	735 204 207	0.440	105	175	43	120	190	54
32	63	16 / 16	735 204 208	0.751	120	190	50	135	205	67
40	75	16 / 16	735 204 209	1.787	145	225	61	160	240	79
50	90	16 / 10	735 204 210	2.366	170	260	71	185	275	101
63	110	16 / 10	735 204 211	3.873	210	310	80	225	325	119
75	125	16 / 10	735 204 212	5.405	225	330	91	240	345	134
90	140	16 / 10	735 204 213	6.589	250	360	108	265	375	170
110	160	16 / 10	735 204 214	12.217	260	375	108	275	390	170
125	180	10 / 10	735 204 265	10.947	280	400	157	295	415	190
140	200	10 / 10	735 204 266	17.439	285	405	170	300	420	270
160	225	10 / 10	735 204 267	25.401	335	460	205	350	475	300
200	280	10 / 10	735 204 269	35.769	370	500	220	385	515	325
225	315	10 / 10	735 204 270	56.650	350	500	220	365	515	325



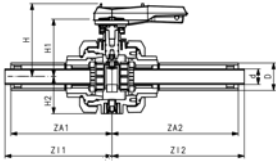
Termination fitting PVDF/PE100

- Sealing in body EPDM

d [mm]	D [mm]	PN [bar]	Code	kg	Za [mm]	Zi [mm]	Zie [mm]	D1 [mm]
20	50	16 / 10	735 964 206	0.279	175	190	190	70
25	50	16 / 10	735 964 207	0.291	175	190	190	70
32	63	16 / 10	735 964 208	0.432	185	200	200	80
40	75	16 / 10	735 964 209	0.583	205	220	220	90
50	90	16 / 10	735 964 210	0.994	250	265	265	110
63	110	16 / 10	735 964 211	1.387	270	285	285	130
75	125	16 / 10	735 964 212	1.837	290	305	305	140
90	140	16 / 10	735 964 213	2.489	310	325	325	160
110	160	16 / 10	735 964 214	3.293	330	345	345	170
125	180	10 / 10	735 964 265	2.989	345	360	360	190
140	200	10 / 10	735 964 266	6.358	360	375	375	210
160	225	10 / 10	735 964 267	6.670	390	405	405	230
200	280	10 / 10	735 964 269	10.542	375	390	390	280
225	315	10 / 10	735 964 270	13.903	430	445	445	315

CONTAIN-IT Plus

Ball valve type 546 PVDF/PE100 Connections for butt fusion

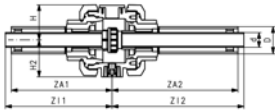


Model:

- Manual operated
- Manual override with ratchet setting
- Pneumatic or electric actuator available separately
- Protective housing PVC-U PN6 / sealing according to inner pipe
- For easy installation and removal

d [mm]	D [mm]	PN [bar]	FPM Code	kg	ZA 1 [mm]	ZA 2 [mm]	Zi 1 [mm]	Zi 2 [mm]	H [mm]	H1 [mm]	H2 [mm]
20	50	16 / 6	735 239 226	4.500	255	330	270	345	222	182	85
25	50	16 / 6	735 239 227	7.000	255	330	270	345	222	182	85
32	63	16 / 6	735 239 228	7.300	275	355	290	370	234	194	105
40	75	16 / 6	735 239 229	9.800	325	410	340	425	244	210	123
50	90	16 / 6	735 239 230	11.800	340	425	355	440	244	210	123
63	110	16 / 6	735 239 231	13.200	350	480	365	495	244	210	123

Mechanical joint PVDF/PE100 Connections for butt fusion



Model:

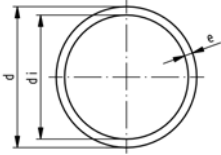
- Protective housing PVC-U PN6 / sealing according to inner pipe
- With union PVDF
- For easy installation and removal

d [mm]	D [mm]	PN [bar]	FPM Code	kg	ZA 1 [mm]	ZA 2 [mm]	Zi 1 [mm]	Zi 2 [mm]	H [mm]	H2 [mm]
20	50	16 / 6	735 240 226	4.200	255	330	270	345	92	85
25	50	16 / 6	735 240 227	6.500	255	330	270	345	92	85
32	63	16 / 6	735 240 228	6.600	275	355	290	370	104	105
40	75	16 / 6	735 240 229	9.300	325	410	340	425	119	123
50	90	16 / 6	735 240 230	10.300	340	425	355	440	119	123
63	110	16 / 6	735 240 231	10.100	350	480	365	495	119	123

CONTAIN-IT Plus

Inner pipe and connection elements PVDF

SYGEF Standard pipe PN16



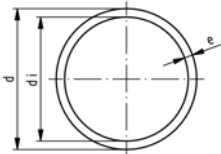
Model:

- Material: PVDF
- Length: Lengths of 5 m

* on request

d [mm]	PN	FM	Code	kg	e [mm]	di [mm]	
20	16	BCF, IR	175 480 203	0.210	1.9	16.2	
25	16	BCF, IR	175 480 204	0.269	1.9	21.2	
32	16	BCF, IR	175 480 205	0.435	2.4	27.2	
40	16	BCF, IR	175 480 206	0.563	2.4	35.2	
50	16	BCF, IR	175 480 207	0.850	3.0	44.0	
63	16	BCF, IR	175 480 208	1.090	3.0	57.0	
75	16	BCF, IR	175 480 209	1.550	3.6	67.8	
90	16	BCF, IR	175 480 210	2.230	4.3	81.4	
110	16	BCF, IR	175 480 211	3.330	5.3	99.4	

SYGEF Standard pipe PN10



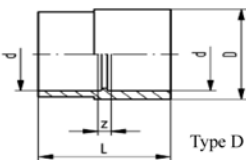
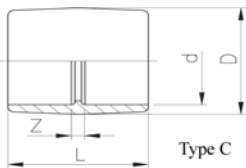
Model:

- Material: PVDF
- Length: Lengths of 5 m

* on request

d [mm]	PN	FM	Code	kg	e [mm]	di [mm]	
* 125	10	IR	175 480 667	2.840	3.9	117.2	
140	10	IR	175 480 673	3.520	4.3	131.4	
160	10	IR	175 480 668	4.540	4.9	150.2	
200	10	IR	175 480 669	7.190	6.2	187.6	
225	10	IR	175 480 670	8.950	6.9	211.2	

SYGEF Standard socket equal PN16



Model:

- Material: PVDF
- d25 - d50: combination type reducing bush / socket equal

d [mm]	PN	D-d [mm]	Code	kg	D [mm]	L [mm]	z [mm]	Type
20	16	-	735 910 106	0.013	27	35	7	C
25	16	32 - 25	735 910 107	0.023	32	39	7	C
32	16	40 - 32	735 910 108	0.038	40	43	7	C
40	16	50 - 40	735 910 109	0.062	50	48	8	D
50	16	63 - 50	735 910 110	0.102	63	54	8	D
63	16	-	735 910 111	0.146	75	62	8	C

CONTAIN-IT Plus

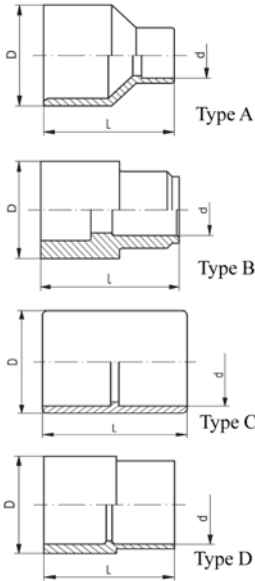
SYGEF Standard reducing bush PN16

Model:

- Material: PVDF

Attention:

- to determine the z-measure please consider the overview of functionality



PN	D-d [mm]	Code	kg	L [mm]	Type
16	25 - 20	735 910 337	0.016	37	A
16	32 - 20	735 910 342	0.023	43	A
16	32 - 25	735 910 107	0.023	39	C
16	40 - 20	735 910 348	0.034	48	A
16	40 - 25	735 910 347	0.035	48	A
16	40 - 32	735 910 108	0.038	43	C
16	50 - 20	735 910 355	0.059	54	A
16	50 - 25	735 910 354	0.059	54	A
16	50 - 32	735 910 353	0.061	54	A
16	50 - 40	735 910 109	0.062	48	D
16	63 - 20	735 910 362	0.102	64	A
16	63 - 25	735 910 361	0.105	64	A
16	63 - 32	735 910 360	0.108	64	A
16	63 - 40	735 910 359	0.118	64	A
16	63 - 50	735 910 110	0.102	54	D

overview about functionality

main function							additional functions											
reduction spigot - socket							reduction socket - socket				reduction spigot - spigot				reduction socket - spigot			
Code	PN	L	spigot D	socket d	L	Z	socket D	socket d	L	Z	spigot D	spigot d	L	Z	socket D	spigot d	L	Z
735 910 334	16	35	20	16	35	22												
735 910 337	16	37	25	20	37	23												
735 910 342	16	43	32	20	43	29	25	20	43	13								
735 910 107	16	39	32	25	39	23												
735 910 348	16	48	40	20	48	34	32	20	48	16								
735 910 347	16	48	40	25	48	32	32	25	48	14	40	32	48	48				
735 910 108	16	43	40	32	43	25												
735 910 355	16	54	50	20	54	40	40	20	54	20								
735 910 354	16	54	50	25	54	38	40	25	54	18	50	32	54	54	40	32	54	34
735 910 353	16	54	50	32	54	36	40	32	54	16	50	40	54	54				
735 910 109	16	48	50	40	48	28												
735 910 362	16	64	63	20	64	50	50	20	64	27								
735 910 361	16	64	63	25	64	48	50	25	64	25	63	32	64	64	50	32	64	41
735 910 360	16	64	63	32	64	46	50	32	64	23	63	40	64	64	50	40	64	41
735 910 359	16	64	63	40	64	44	50	40	64	21	63	50	64	64				
735 910 110	16	54	63	50	54	31												

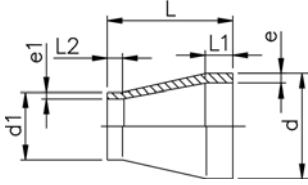
please note: illustration of the functions not inevitably conform to respective type!

CONTAIN-IT Plus

SYGEF Standard reducer PN16

Model:

- Material: PVDF

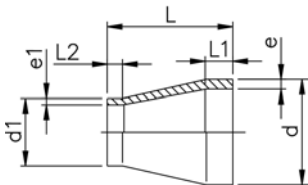


d - d1 [mm]	PN	FM	Code	kg	e [mm]	e1 [mm]	L [mm]	L1 [mm]	L2 [mm]
25 - 20	16	BCF, IR	735 908 637	0.017	1.9	1.9	50	22	22
32 - 20	16	BCF, IR	735 908 642	0.022	2.4	1.9	50	22	22
32 - 25	16	BCF, IR	735 908 641	0.024	2.4	1.9	50	22	22
40 - 20	16	BCF, IR	735 908 648	0.030	2.4	1.9	58	22	24
40 - 25	16	BCF, IR	735 908 647	0.030	2.4	1.9	55	22	24
40 - 32	16	BCF, IR	735 908 646	0.034	2.4	2.4	55	22	24
50 - 25	16	BCF, IR	735 908 654	0.046	3.0	1.9	60	22	25
50 - 32	16	BCF, IR	735 908 653	0.050	3.0	2.4	60	22	25
50 - 40	16	BCF, IR	735 908 652	0.040	3.0	2.4	60	22	25
63 - 32	16	BCF, IR	735 908 660	0.066	3.0	2.4	65	22	25

SYGEF Standard reducer PN10

Model:

- Material: PVDF



d - d1 [mm]	PN [bar]	FM	Code	kg	e [mm]	e1 [mm]	L [mm]	L1 [mm]	L2 [mm]
90 - 63	10 / 16	BCF, IR	735 908 551	0.124	2.8	3.0	75	25	30
110 - 63	10 / 16	BCF, IR	735 908 553	0.196	3.4	3.0	90	30	30
110 - 90	10 / 10	BCF, IR	735 908 555	0.197	3.4	2.8	90	30	35
125 - 110	10 / 16	IR	735 908 580	0.270	3.9	5.3	100	35	40
140 - 110	10 / 16	IR	735 908 585	0.385	4.3	5.3	110	40	40
140 - 125	10 / 10	IR	735 908 584	0.340	4.3	3.9	110	40	40
160 - 110	10 / 10	IR	735 908 561	0.516	4.9	3.4	120	40	40
160 - 110	10 / 16	IR	735 908 590	0.573	4.9	5.3	120	40	40
160 - 140	10 / 10	IR	735 908 588	0.568	4.9	4.3	120	40	40
200 - 160	10 / 10	IR	735 908 592	0.830	6.2	4.9	145	50	40
225 - 110	10 / 10	IR	735 908 566	1.120	6.9	3.4	160	55	35
225 - 110	10 / 16	IR	735 908 595	0.940	6.9	5.3	160	55	35
225 - 160	10 / 10	IR	735 908 596	1.140	6.9	4.9	160	55	40
225 - 200	10 / 10	IR	735 908 597	1.200	6.9	6.2	160	55	50

CONTAIN-IT Plus

PFA/PE100

Elbow 90° PFA/PE100



d [inch]	D [mm]	Code	kg	
1/2	50	737 104 104	0.500	
3/4	63	737 104 105	0.700	

Tee 90° PFA/PE100



d [inch]	D [mm]	Code	kg	
1/2	50	737 204 104	0.600	
3/4	63	737 204 105	1.100	

20m coils inch



Model:

- Tube TMID - Standard
- Roll 20m
- Inch Size

d [inch]	e [mm]	Code	
1/2	1,6	737 091 004	
3/4	1,6	737 091 005	

50m coils inch



Model:

- Tube TMID - Standard
- Roll with 50m
- Inch Size

d [inch]	e [mm]	Code	
1/2	1,6	737 090 004	
3/4	1,6	737 090 005	

20m coils inch



Model:

- Tube TIL - HP
- Roll 20m
- Inch Size

d [inch]	e [mm]	Code	
1/2	1,6	737 011 004	
3/4	1,6	737 011 005	

CONTAIN-IT Plus

50m coils
inch



Model:

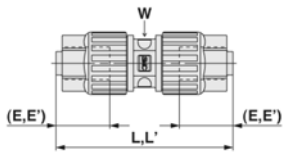
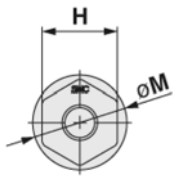
- Tube TIL - HP
- Roll with 50m
- Inch Size

d [inch]	e [mm]	Code	
1/2	1,6	737 010 004	
3/4	1,6	737 010 005	

Union LQ3U

Model:

- All PFA



d [inch]	Code	kg	E [mm]	H [mm]	L [mm]	M [mm]	
1/2	737 020 021	0.100	24.5	24	52.5	29	
3/4	737 020 022	0.250	27.0	32	64.0	37	

CONTAIN-IT Plus

Pneumatic rotary actuators PA

Pneumatic actuator type PA11/PA21 Fail safe to close (FC)



Type	DN-DN [mm]	Inch [inch]	Code	kg
PA 21 FC	32 - 50	1 ¼ - 2	198 150 130	1.445

Pneumatic actuator type PA11/PA21 Fail safe to open (FO)



Type	DN-DN [mm]	Inch [inch]	Code	kg
PA 21 FO	32 - 50	1 ¼ - 2	198 150 131	1.419

Pneumatic actuator type PA11/PA21 Double action (DA)



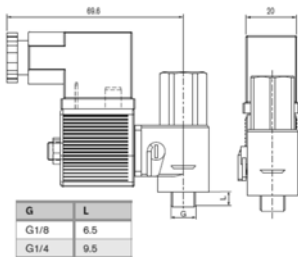
Type	DN-DN [mm]	Inch [inch]	Code	kg
PA 21 DA	32 - 50	1 ¼ - 2	198 150 132	0.995

Solenoid pilot valve type PV94 Pilot valve 3/2-ways



Model:

- IP65 protection class
- For direct installation (including valve body and hollow screw)
- Port P compressed air connection G 1/8
- Port A actuator connection G 1/8
- With connector plug form B
- With adapter G1/8 to G1/4
- To pneumatic actuators FC/FO (single acting)
- Circuit function C: de-energized closed
- Valve material polyamid / brass



Voltage	DN [mm]	Compressed air connection P	Actuator connection	PN	kv-value ($\Delta p=1$ bar) [l/min]	NBR Code	kg
24 V=	1.2	G 1/8	G 1/8	10	48	199 190 574	0.187
230 V, 50-60 Hz	1.2	G 1/8	G 1/8	10	48	199 190 572	0.126

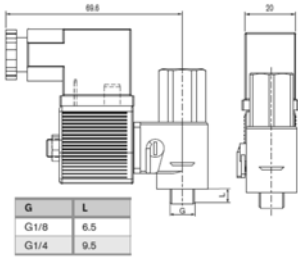
CONTAIN-IT Plus

Solenoid pilot valve type PV94 Pilot valve 3/2-ways



Model:

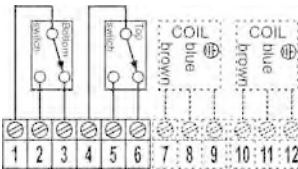
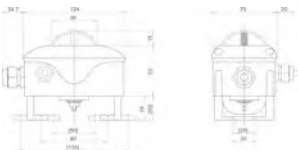
- IP65 protection class
- For direct installation (including valve body and hollow screw)
- Port P compressed air connection tube push-in 6mm
- Port A actuator connection G 1/8
- With connector plug form B
- With adapter G1/8 to G1/4
- To pneumatic actuators FC/FO (single acting)
- Circuit function C: de-energized closed
- Valve material polyamid / brass



Voltage	DN [mm]	Compressed air connection P	Actuator connection	PN	kv-value ($\Delta p=1$ bar) [l/min]	NBR Code	kg
24 V=	1.2	push-in	G 1/8	10	48	199 190 573	0.130
230 V, 50-60 Hz	1.2	push-in	G 1/8	10	48	199 190 571	0.133

For actuator units pneumatic type PA11 - PA90 Limit switch box with 2 auxiliary switches

- Including namur mounting flange



Voltage	Code	kg
250 V ~/10 A	199 190 282	0.270

Electric actuator type EA11

Note:

F05 (WS11/14) per EN ISO 5211 with adapter 198.000.587



Voltage	Code	kg
100-230 V~	198 150 180	1.857
24 V= / ~	198 150 181	1.847

Electric actuator type EA21

Note:

F05 (WS11/14) per EN ISO 5211 with adapter 198.000.587



Voltage	Code	kg
100-230 V~	198 150 182	2.193
24 V= / ~	198 150 183	2.170

CONTAIN-IT Plus

For electric actuators

Type EA11/EA21/EA31/EA42

Limit switch kit with mechanical limit switches AgNi



Voltage	Code	kg	
250 V ~6 A	199 190 092	0.101	

Adaptor set

Model:

- To upgrade The CONTAIN-IT Plus Ball Valve 546 with actuators



Code	kg	
700 238 796	0.192	

Pin wrench

Model:

- To open the protective housing of the CONTAIN-IT Plus Ball Valve 546 and the CONTAIN-IT Plus Mechanical Joint



d [mm]	Code	kg	
20/50 - 25/50	700 239 037	0.406	
32/63	700 239 038	0.600	
40/75 - 63/110	700 239 039	0.766	

CONTAIN-IT Plus

Welding tools

MSE 63/MSE 110 MSE socket fusion tool

Note:

For fusion jointing of PP, PE and PVDF pipes and fittings.

Size range d 16 - 110 mm



d-d [mm]	Type	Performance	Code	kg	
16 - 63	MSE 63 T	230 V/800 W	790 105 081	1.700	
16 - 63	MSE 63 T	115 V/800 W	790 105 096	2.075	
16 - 63	MSE 63 E	230 V/800 W	790 105 082	1.800	
16 - 110	MSE 110 T	230 V/1500 W	790 105 083	3.200	
16 - 110	MSE 110 E	230 V/1500 W	790 105 084	3.200	
16 - 110	MSE 110 T	115 V/1500 W	790 105 126	3.200	

CONTAIN-IT Plus

MSA Plus 400 Traceability electrofusion unit With USB interfaces



NEW, environmentally friendly manufactured Electrofusion unit in accordance with EU directive 2002/95/EU (RoHS).

Professional Electrofusion unit for traceability of piping system components from raw material to completed Electrofusion joint (in accordance with ISO 12176). The MSA units with the unique inverter technology and the active cooling system for trouble-free operation from generator or mains supply. Suitable for jointing in series. The unit is equipped with compact flash memory card (exchangeable data carrier) and either a barcode reader pen or barcode scanner. The unit is robust, light and easy to use. The menu has up to 27 different languages. Scope of delivery includes: 1 transport case, 1 USB memory stick, 1 pair of angle adapter clips 4.0 mm, operating instructions, configuration card and Software MSA WIN-WELD.

For printer or PC communication, the USB cable (799350619) is required.

Technical Data

Ambient temperature	-10 °C to +45 °C
Mains voltage	180 V - 264 V AC
Mains frequency	45Hz - 65 Hz
Fusion voltage	8 - 42 (48) V AC
Fusion current	max. 80 A
Power	max. 3500 W
Protection	1 / IP 65
Interfaces	USB (type A) for printer communication and to load software updates USB (type B) for PC communication
Mains cable	3 m
Fusion cable	3 m
Dimensions (WxHxD)	284 x 440 x 195 mm
Weight incl. cables	ca. 11,5 kg, light-weight aluminium housing
Display	LCD graphic, background light, contrast adjustment
Size display (WxH)	132 x 39 mm
Type size	8 mm
Languages	Brasilian, Bulgarian, Chinese, Croatian, Czech, Danish, Dutch, English, Estonian, Finnish, French, German, Hungarian, Italian, Korean, Latvian, Lithuanian, Macedonian, Malaysian, Norwegian, Polish, Portuguese, Romanian, Russian, Slovakian, Slovenian, Spanish, Swedish, Turkish
Warranty	24 months

Type	Code	CFM	kg	Description
MSA Plus 400	799 350 580	183 36 00	15.784	barcode reader pen, transport case



IR-63 Plus® fully-equipped machine

Model:

- Fully-equipped fusion jointing machine for welding SYGEF Standard, SYGEF Plus, PROGEF Standard, PROGEF Natural, PROGEF Plus, PE 100, PFA in dimensions d 20-63 mm with integrated remote welding unit, 2 USB interfaces, monochrome display with icons and 12 languages.
- 1-phase AC (50/60 Hz) 230 V L/N/PE

Note:

For CONTAIN-IT Plus dimensions d20/50 - d50/90
d40/75 and d50/90 only fitting - pipe with the fitting in the left clamping station

d-d [mm]	Code	kg
20 - 63	790 131 005	35.000

CONTAIN-IT Plus

IR-110 Plus Fully-Equipped Machine



Model:

- Fully-equipped fusion jointing machine for welding SYGEF® Standard, SYGEF® Plus, PROGEF® Standard, PROGEF® Natural, PROGEF® Plus, PE 100, PFA, ECTFE in dimensions d 20-110 mm, 2 USB interfaces, monochrome display with icons and 12 languages.
- 1-phase AC (50/60 Hz) 230 V L/N/PE
- Machine housing complete (1 pcs.)
- Heater and facing tool assembly (1 pcs.)
- Transport box (1 pcs.)
- Pipe stop (1 pcs.)
- Clamping inserts d 20-90 mm (8 pcs. per dimension)
- End caps PE d 20-110 mm (4 pcs. per dimension)
- Power supply cable 230 V (1 pcs.)
- Cleaning brush No. 8 (1 pcs.)
- Hexagon keys 4 mm (1 pcs.), 5 mm (1 pcs.), 6 mm (1 pcs.)
- Socket wrench (facing blades) (1 pcs.)
- Accessory Tray (1 pcs.)
- Manual (1 pcs.)

d-d [mm]	Code	kg	
20 - 110	790 132 001	75.000	



Half shell special AL for IR-63 Plus

- For welding CONTAIN-IT Plus
- 4 pieces required for one set
- The clamping inserts are different for each dimension. They are used to clamp and position the pipe components.

d [mm]	Code	kg	Pieces	
20	700 238 100	0.074	1	
25	700 238 101	0.072	1	
32	700 238 102	0.061	1	
40	700 238 103	0.046	1	
50	700 238 104	0.056	1	

CONTAIN-IT Plus

IR-225 Plus Fully-Equipped Machine with HP Working Table (HP = High Purity)



Model:

- Fully-equipped fusion jointing machine for welding SYGEF Standard, SYGEF Plus, PROGEF Standard, PROGEF Natural, PROGEF Plus, PE 100 in dimensions d 63-225 mm, 2 USB interfaces, monochrome display with icons and 12 languages.
- 1-phase AC (50/60 Hz) 230 V L/N/PE or 3-phase AC (50/60 Hz) 400 V/230 VL1/L2/L3/N/PE
- Machine base (1 pcs.)
- Facing tool (1 pcs.)
- Heater assembly (1 pcs.)
- Working table, HP (1 pcs.)
- Movable clamping units (1 pcs.)
- Clamping inserts d 63-225 mm (8 pcs. per dimension)
- End caps PE d 63-225 mm (4 pcs. per dimension)
- Transportation lock (1 pcs.)
- Pipe stop (1 pcs.)
- Hexagon key 5 mm (1 pcs.)
- Hexagon key 6 mm (1 pcs.)
- Combination ring /open-jaw wrench 13 mm (1 pcs.)
- Cleaning brush (1 pcs.)
- Connecting cable 400 V - 230 V (1 pcs.)
- Ball for lever (1 pcs.)
- Manual (1 pcs.)

d-d [mm]	Code	kg	
63 - 225	790 133 009	453.000	



Half shell special AL for IR-225 Plus

- For welding CONTAIN-IT Plus
- 4 pieces required for one set
- The clamping inserts are different for each dimension. They are used to clamp and position the pipe components.

d [mm]	Code	kg	Pieces	
63	700 238 105	0.700	1	
75	700 238 106	0.400	1	
90	700 238 107	0.400	1	
110	700 238 108	0.500	1	



Manual pipe peeling and chamfering tools

d [mm]	Code	kg	
20	799 300 260	0.087	
25	799 300 270	0.080	
32	799 300 280	0.099	
40	799 300 290	0.240	
50	799 300 300	0.244	
63	799 300 310	0.507	
75	799 300 320	0.680	
90	799 300 330	1.006	
110	799 300 340	1.355	

CONTAIN-IT Plus

Rotary peeler RS

Note:

This innovative Rotary Peeler RS is designed to use for universal peeling at the pipe end, for electrofusion couplings, tees and elbows and as well as for electrofusion saddles.

Suitable for peeling of pipes made out of PE 80, PE 100, PEX, PP.



Article	d [mm]	Code	CFM	kg	
	50	790 136 002	246 28 73	1.310	
	63	790 136 003	246 28 74	1.310	
	75	790 136 004	246 28 75	1.540	
	90	790 136 005	246 28 76	1.540	
	110	790 136 006	246 28 77	1.540	
	125	790 136 007	246 28 78	1.730	
	140	790 136 008	246 28 79	1.730	
	160	790 136 009	246 28 81	1.730	
	180	790 136 010	246 28 82	2.030	
	200	790 136 011	246 28 83	2.030	
	225	790 136 012	246 28 84	2.030	
	280	790 136 014	246 28 86	2.440	
	315	790 136 015	246 28 87	2.440	

CONTAIN-IT Plus

Solvent Cements

Tangit solvent cement for PVC-U



- 0.125 kg tube
- Tin à 0.250, 0.500 and 1.000 kg (Net)

Code	kg	Description
799 298 000	0.125	tube: 0.125 kg
799 298 001	0.310	tin: 0.25 kg
799 298 002	0.590	tin: 0.50 kg
799 298 003	1.000	tin: 1.00 kg

Tangit PVC-C Adhesive Can



Code	kg
700 648 132	0.801

Tangit Dytex special solvent cement

Model:

- For PVC-U, PVC-C
- Tin à 675g
- Special solving cement, transparent
- For concentrated acids and strong oxidizing agents the use of Dytex is recommended



Code	kg
799 298 016	0.668

Tangit PVC-U/PVC-C/ABS cleaner

Model:

- For PVC-U, PVC-C, ABS
- 1 litre tin



Code	CFM	kg
799 298 010	222 86 62	0.868

Tangit Dytex solvent/cleaner

Model:

- For PVC-U, PVC-C
- Tin à 500ml



Code	kg
799 298 017	0.675

CONTAIN-IT Plus

KS Tangit Cleaner



- Special cleaning agent for plastic fusion connections with PP, PE, PVDF and PB.

Code	kg	
799 298 023	0.872	

Cap for cement



- Cap prevents the evaporation of the solvent whilst using the Tangit cement

Code	CFM	kg	
799 298 028	222 86 63	0.030	

Chamfering tools



- Chamfering tool (15° bevel) for plastic pipes (PVC, ABS, PB, PP, PE). Coated prism surface suitable for clean room applications. Fast and reliable adjustment to the different pipe diameters and wall thickness.

d-d [mm]	Code	kg	
16 - 200	790 309 003	1.024	
63 - 400	790 309 004	2.548	

Chamfering tool



d-d [mm]	Code	kg	
25 - 63	761 066 794	0.619	
75 - 110	761 066 836	0.830	

Round Brushes



d-d [mm]		Code	CFM	kg	Closest inch	
6 - 10	4 mm (for Fittings 6-10mm)	799 299 001	222 86 64	0.004	- 1/8	
12 - 32	8 mm (for Fittings 12-32mm)	799 299 002	222 86 65	0.006	1/4 - 1	

Flat Brushes



d-d [mm]		Code	CFM	kg	Closest inch	
40 - 63	25x3 mm (for Fittings 40-63mm)	799 299 003	222 86 66	0.015	1 1/4 - 2	
75 - 225	50x5 mm (for Fittings 75-225mm)	799 299 004	222 86 67	0.035	2 1/2 - 8	
250 - 400	75x6 mm (for Fittings 250-400mm)	799 299 005	222 86 68	0.053	9 - 16	

Index

Code	Page	Code	Page	Code	Page
161 017 065	9	193 017 117	9	700 238 105	71
161 017 087	9	193 017 118	9	700 238 106	71
161 017 088	9	193 017 119	9	700 238 107	71
161 017 089	9	193 017 120	9	700 238 108	71
161 017 094	26	193 017 122	9	700 238 424	16
161 017 095	26	193 017 123	9	700 238 425	16
161 017 106	26	193 017 156	51	700 238 426	16
161 017 107	26	193 017 157	51	700 238 427	16
161 017 108	26	193 017 158	51	700 238 428	16
161 017 109	26	193 017 159	51	700 238 429	16
161 017 110	9	193 017 160	9	700 238 430	16
161 017 111	9	193 017 161	9	700 238 431	16
161 017 112	26	193 017 162	9	700 238 432	16
161 017 113	26	193 017 163	51	700 238 433	16
161 017 114	26	193 017 164	51	700 238 434	16
161 017 115	26	193 017 165	51	700 238 436	16
161 017 116	26	193 017 166	51	700 238 437	16
161 017 117	26	193 017 167	51	700 238 444	15
161 546 042	19	193 017 168	51	700 238 445	15
163 017 131	32	193 017 169	51	700 238 446	15
163 017 132	32	193 017 170	51	700 238 447	15
163 017 133	32	193 017 206	51	700 238 448	15
163 017 134	32	193 017 207	51	700 238 449	15
163 017 135	32	193 131 037	18	700 238 450	15
163 017 136	32	193 131 047	18	700 238 451	15
163 017 137	32	193 131 057	18	700 238 452	15
163 017 138	32	193 131 077	18	700 238 453	15
163 017 139	32	193 131 087	18	700 238 454	15
167 480 711	40	193 131 107	18	700 238 456	15
167 480 712	40	193 131 117	18	700 238 457	15
167 480 713	40	193 131 127	18	700 238 796	67
167 480 714	40	193 131 147	18	700 239 037	67
167 480 715	40	193 131 157	18	700 239 038	67
167 480 716	40	193 133 067	18	700 239 039	67
167 480 717	40	193 133 097	18	700 244 652	19
167 480 718	40	193 281 617	18	700 648 132	73
167 480 719	40	198 150 130	65	721 104 106	20
167 480 720	40	198 150 131	65	721 104 107	20
167 480 721	40	198 150 132	65	721 104 108	20
167 480 722	40	198 150 180	66	721 104 109	20
167 480 723	40	198 150 181	66	721 104 110	20
167 480 724	40	198 150 182	66	721 104 111	20
167 480 725	40	198 150 183	66	721 104 112	20
167 481 028	40	199 190 092	67	721 104 113	20
167 481 029	40	199 190 282	66	721 104 114	20
175 480 203	60	199 190 571	66	721 104 115	20
175 480 204	60	199 190 572	65	721 104 116	20
175 480 205	60	199 190 573	66	721 104 117	20
175 480 206	60	199 190 574	65	721 104 119	20
175 480 207	60	700 238 043	17	721 104 120	20
175 480 208	60	700 238 046	17	721 104 156	20
175 480 209	60	700 238 047	17	721 104 157	20
175 480 210	60	700 238 049	17	721 104 158	20
175 480 211	60	700 238 053	17	721 104 159	20
175 480 667	60	700 238 054	17	721 104 160	20
175 480 668	60	700 238 060	17	721 104 161	20
175 480 669	60	700 238 061	17	721 104 162	20
175 480 670	60	700 238 062	17	721 104 163	20
175 480 673	60	700 238 064	17	721 104 164	20
192 017 087	10	700 238 065	17	721 154 106	21
192 017 088	10	700 238 068	17	721 154 107	21
192 017 089	10	700 238 070	17	721 154 108	21
192 017 110	10	700 238 071	17	721 154 109	21
192 017 111	10	700 238 100	70	721 154 110	21
193 017 113	9	700 238 101	70	721 154 111	21
193 017 114	9	700 238 102	70	721 154 112	21
193 017 115	9	700 238 103	70	721 154 113	21
193 017 116	9	700 238 104	70	721 154 114	21

Index

Code	Page	Code	Page	Code	Page
721 154 115	21	721 240 127	24	721 964 116	23
721 154 116	21	721 240 128	24	721 964 117	23
721 154 117	21	721 240 129	24	721 964 119	23
721 154 119	21	721 240 130	24	721 964 120	23
721 154 120	21	721 240 131	24	721 964 156	23
721 154 156	21	721 240 156	25	721 964 157	23
721 154 157	21	721 240 157	25	721 964 158	23
721 154 158	21	721 240 158	25	721 964 159	23
721 154 159	21	721 240 159	25	721 964 160	23
721 154 160	21	721 240 160	25	721 964 161	23
721 154 161	21	721 240 161	25	721 964 162	23
721 154 162	21	721 240 176	25	721 964 163	23
721 154 163	21	721 240 177	25	721 964 164	23
721 154 164	21	721 240 178	25	723 104 106	28
721 204 106	22	721 240 179	25	723 104 107	28
721 204 107	22	721 240 180	25	723 104 108	28
721 204 108	22	721 240 181	25	723 104 109	28
721 204 109	22	721 900 181	27	723 104 110	28
721 204 110	22	721 900 331	27	723 104 111	28
721 204 111	22	721 900 337	27	723 104 112	28
721 204 112	22	721 900 341	27	723 104 113	28
721 204 113	22	721 900 346	27	723 104 114	28
721 204 114	22	721 900 348	27	723 104 156	28
721 204 115	22	721 900 352	27	723 104 157	28
721 204 116	22	721 900 354	27	723 104 158	28
721 204 117	22	721 900 355	27	723 104 159	28
721 204 119	22	721 900 358	27	723 104 160	28
721 204 120	22	721 900 360	27	723 104 161	28
721 204 156	22	721 900 364	27	723 104 162	28
721 204 157	22	721 900 370	27	723 104 163	28
721 204 158	22	721 900 372	27	723 104 164	28
721 204 159	22	721 900 376	27	723 154 106	28
721 204 160	22	721 900 378	27	723 154 107	28
721 204 161	22	721 900 380	27	723 154 108	28
721 204 162	22	721 900 384	27	723 154 109	28
721 204 163	22	721 900 386	27	723 154 110	28
721 204 164	22	721 900 388	27	723 154 111	28
721 239 106	24	721 900 390	27	723 154 112	28
721 239 107	24	721 900 392	27	723 154 113	28
721 239 108	24	721 900 393	27	723 154 114	28
721 239 109	24	721 900 398	27	723 154 156	28
721 239 110	24	721 910 106	27	723 154 157	28
721 239 111	24	721 910 107	27	723 154 158	28
721 239 126	24	721 910 108	27	723 154 159	28
721 239 127	24	721 910 109	27	723 154 160	28
721 239 128	24	721 910 110	16	723 154 161	28
721 239 129	24	721 910 111	16	723 154 162	28
721 239 130	24	721 910 112	16	723 154 163	28
721 239 131	24	721 910 113	16	723 154 164	28
721 239 156	24	721 910 114	16	723 204 106	29
721 239 157	24	721 910 115	16	723 204 107	29
721 239 158	24	721 910 116	16	723 204 108	29
721 239 159	24	721 910 117	16	723 204 109	29
721 239 160	24	721 910 119	16	723 204 110	29
721 239 161	24	721 910 120	16	723 204 111	29
721 239 176	24	721 910 122	16	723 204 112	29
721 239 177	24	721 910 123	16	723 204 113	29
721 239 178	24	721 910 706	18	723 204 114	29
721 239 179	24	721 964 106	23	723 204 156	29
721 239 180	24	721 964 107	23	723 204 157	29
721 239 181	24	721 964 108	23	723 204 158	29
721 240 106	24	721 964 109	23	723 204 159	29
721 240 107	24	721 964 110	23	723 204 160	29
721 240 108	24	721 964 111	23	723 204 161	29
721 240 109	24	721 964 112	23	723 204 162	29
721 240 110	24	721 964 113	23	723 204 163	29
721 240 111	24	721 964 114	23	723 204 164	29
721 240 126	24	721 964 115	23	723 239 106	30

Index

Code	Page
723 239 107	30
723 239 108	30
723 239 109	30
723 239 110	30
723 239 111	30
723 239 126	30
723 239 127	30
723 239 128	30
723 239 129	30
723 239 130	30
723 239 131	30
723 239 156	30
723 239 157	30
723 239 158	30
723 239 159	30
723 239 160	30
723 239 161	30
723 239 176	30
723 239 177	30
723 239 178	30
723 239 179	30
723 239 180	30
723 239 181	30
723 240 106	31
723 240 107	31
723 240 108	31
723 240 109	31
723 240 110	31
723 240 111	31
723 240 126	31
723 240 127	31
723 240 128	31
723 240 129	31
723 240 130	31
723 240 131	31
723 240 156	31
723 240 157	31
723 240 158	31
723 240 159	31
723 240 160	31
723 240 161	31
723 240 176	31
723 240 177	31
723 240 178	31
723 240 179	31
723 240 180	31
723 240 181	31
723 900 337	33
723 900 341	33
723 900 346	33
723 900 348	33
723 900 352	33
723 900 353	33
723 900 355	33
723 900 358	33
723 900 360	33
723 900 364	33
723 900 370	33
723 900 372	33
723 900 376	33
723 910 106	32
723 910 107	32
723 910 108	32
723 910 109	32
723 910 110	32
723 910 111	32
723 910 112	32
723 910 113	32

Code	Page
723 910 114	32
723 964 106	29
723 964 107	29
723 964 108	29
723 964 109	29
723 964 110	29
723 964 111	29
723 964 112	29
723 964 113	29
723 964 114	29
723 964 156	29
723 964 157	29
723 964 158	29
723 964 159	29
723 964 160	29
723 964 161	29
723 964 162	29
723 964 163	29
723 964 164	29
727 104 106	34
727 104 107	34
727 104 108	34
727 104 109	34
727 104 110	34
727 104 111	34
727 104 112	34
727 104 113	34
727 104 114	34
727 104 206	37
727 104 207	37
727 104 208	37
727 104 209	37
727 104 210	37
727 104 211	37
727 104 212	37
727 104 213	37
727 104 214	37
727 104 215	37
727 104 216	37
727 104 217	37
727 104 219	37
727 104 220	37
727 154 106	34
727 154 107	34
727 154 108	34
727 154 109	34
727 154 110	34
727 154 111	34
727 154 112	34
727 154 113	34
727 154 114	34
727 154 206	37
727 154 207	37
727 154 208	37
727 154 209	37
727 154 210	37
727 154 211	37
727 154 212	37
727 154 213	37
727 154 214	37
727 154 215	37
727 154 216	37
727 154 217	37
727 154 219	37
727 154 220	37
727 204 106	34
727 204 107	34
727 204 108	34

Code	Page
727 204 109	34
727 204 110	34
727 204 111	34
727 204 112	34
727 204 113	34
727 204 114	34
727 204 206	38
727 204 207	38
727 204 208	38
727 204 209	38
727 204 210	38
727 204 211	38
727 204 212	38
727 204 213	38
727 204 214	38
727 204 215	38
727 204 216	38
727 204 217	38
727 204 219	38
727 204 220	38
727 239 106	36
727 239 107	36
727 239 108	36
727 239 109	36
727 239 110	36
727 239 111	36
727 239 126	36
727 239 127	36
727 239 128	36
727 239 129	36
727 239 130	36
727 239 131	36
727 239 206	39
727 239 207	39
727 239 208	39
727 239 209	39
727 239 210	39
727 239 211	39
727 239 226	39
727 239 227	39
727 239 228	39
727 239 229	39
727 239 230	39
727 239 231	39
727 240 106	36
727 240 107	36
727 240 108	36
727 240 109	36
727 240 110	36
727 240 111	36
727 240 126	36
727 240 127	36
727 240 128	36
727 240 129	36
727 240 130	36
727 240 131	36
727 240 206	39
727 240 207	39
727 240 208	39
727 240 209	39
727 240 210	39
727 240 211	39
727 240 226	39
727 240 227	39
727 240 228	39
727 240 229	39
727 240 230	39
727 240 231	39

Index

Code	Page	Code	Page	Code	Page
727 900 006	41	727 964 212	38	733 240 129	46
727 900 007	41	727 964 213	38	733 240 130	46
727 908 537	42	727 964 214	38	733 240 131	46
727 908 541	42	727 964 215	38	733 900 006	52
727 908 542	42	727 964 216	38	733 900 007	52
727 908 546	42	727 964 217	38	733 910 106	51
727 908 548	42	727 964 219	38	733 910 107	51
727 908 552	42	727 964 220	38	733 910 108	51
727 908 554	42	733 104 106	43	733 910 109	51
727 908 558	42	733 104 107	43	733 910 110	51
727 908 560	42	733 104 108	43	733 910 111	51
727 908 564	42	733 104 109	43	733 910 112	51
727 908 566	42	733 104 110	43	733 910 113	51
727 908 570	42	733 104 111	43	733 910 114	51
727 908 576	42	733 104 112	43	733 910 337	52
727 908 580	42	733 104 113	43	733 910 341	52
727 908 584	42	733 104 114	43	733 910 346	52
727 908 588	42	733 154 106	43	733 910 347	52
727 908 590	42	733 154 107	43	733 910 348	52
727 908 595	42	733 154 108	43	733 910 352	52
727 908 596	42	733 154 109	43	733 910 353	52
727 908 597	42	733 154 110	43	733 910 358	52
727 908 974	42	733 154 111	43	733 910 359	52
727 908 976	42	733 154 112	43	733 910 360	52
727 908 978	42	733 154 113	43	733 910 361	52
727 908 979	42	733 154 114	43	733 910 362	52
727 910 106	40	733 204 106	43	733 910 364	52
727 910 107	40	733 204 107	43	733 910 370	52
727 910 108	40	733 204 108	43	733 910 371	52
727 910 109	40	733 204 109	43	733 910 376	52
727 910 110	40	733 204 110	43	733 964 106	44
727 910 111	40	733 204 111	43	733 964 107	44
727 910 112	40	733 204 112	43	733 964 108	44
727 910 113	40	733 204 113	43	733 964 109	44
727 910 114	40	733 204 114	43	733 964 110	44
727 910 337	41	733 239 106	45	733 964 111	44
727 910 341	41	733 239 107	45	733 964 112	44
727 910 342	41	733 239 108	45	733 964 113	44
727 910 346	41	733 239 109	45	733 964 114	44
727 910 347	41	733 239 110	45	735 104 106	55
727 910 348	41	733 239 111	45	735 104 107	55
727 910 352	41	733 239 126	45	735 104 108	55
727 910 353	41	733 239 127	45	735 104 109	55
727 910 354	41	733 239 128	45	735 104 110	55
727 910 355	41	733 239 129	45	735 104 111	55
727 910 358	41	733 239 130	45	735 104 206	57
727 910 359	41	733 239 131	45	735 104 207	57
727 910 360	41	733 239 156	45	735 104 208	57
727 910 361	41	733 239 157	45	735 104 209	57
727 910 364	41	733 239 158	45	735 104 210	57
727 910 370	41	733 239 159	45	735 104 211	57
727 910 371	41	733 239 160	45	735 104 212	57
727 910 376	41	733 239 161	45	735 104 213	57
727 964 106	35	733 239 161	45	735 104 214	57
727 964 107	35	733 239 176	45	735 104 265	57
727 964 108	35	733 239 177	45	735 104 266	57
727 964 109	35	733 239 178	45	735 104 267	57
727 964 110	35	733 239 179	45	735 104 269	57
727 964 111	35	733 239 180	45	735 104 270	57
727 964 112	35	733 239 181	45	735 154 106	55
727 964 113	35	733 240 106	46	735 154 107	55
727 964 114	35	733 240 107	46	735 154 108	55
727 964 206	38	733 240 108	46	735 154 109	55
727 964 207	38	733 240 109	46	735 154 110	55
727 964 208	38	733 240 110	46	735 154 111	55
727 964 209	38	733 240 111	46	735 154 206	57
727 964 210	38	733 240 126	46	735 154 207	57
727 964 211	38	733 240 127	46	735 154 208	57
		733 240 128	46		

Index

Code	Page	Code	Page	Code	Page
735 154 209	57	735 908 597	62	753 104 212	47
735 154 210	57	735 908 637	62	753 104 213	47
735 154 211	57	735 908 641	62	753 104 214	47
735 154 212	57	735 908 642	62	753 104 215	47
735 154 213	57	735 908 646	62	753 104 216	47
735 154 214	57	735 908 647	62	753 104 217	47
735 154 265	57	735 908 648	62	753 104 219	47
735 154 266	57	735 908 652	62	753 104 220	47
735 154 267	57	735 908 653	62	753 154 206	47
735 154 269	57	735 908 654	62	753 154 207	47
735 154 270	57	735 908 660	62	753 154 208	47
735 204 106	55	735 910 106	60	753 154 209	47
735 204 107	55	735 910 107	60	753 154 210	47
735 204 108	55	735 910 108	60	753 154 211	47
735 204 109	55	735 910 109	60	753 154 212	47
735 204 110	55	735 910 110	60	753 154 213	47
735 204 111	55	735 910 111	60	753 154 214	47
735 204 206	58	735 910 337	61	753 154 215	47
735 204 207	58	735 910 342	61	753 154 216	47
735 204 208	58	735 910 347	61	753 154 217	47
735 204 209	58	735 910 348	61	753 154 219	47
735 204 210	58	735 910 353	61	753 154 220	47
735 204 211	58	735 201 354	61	753 204 206	48
735 204 212	58	735 910 355	61	753 204 207	48
735 204 213	58	735 910 359	61	753 204 208	48
735 204 214	58	735 910 360	61	753 204 209	48
735 204 265	58	735 910 361	61	753 204 210	48
735 204 266	58	735 910 362	61	753 204 211	48
735 204 267	58	735 964 106	55	753 204 212	48
735 204 269	58	735 964 107	55	753 204 213	48
735 204 270	58	735 964 108	55	753 204 214	48
735 239 126	56	735 964 109	55	753 204 215	48
735 239 127	56	735 964 110	55	753 204 216	48
735 239 128	56	735 964 111	55	753 204 217	48
735 239 129	56	735 964 206	58	753 204 219	48
735 239 130	56	735 964 207	58	753 204 220	48
735 239 131	56	735 964 208	58	753 239 206	49
735 239 226	59	735 964 209	58	753 239 207	49
735 239 227	59	735 964 210	58	753 239 208	49
735 239 228	59	735 964 211	58	753 239 209	49
735 239 229	59	735 964 212	58	753 239 210	49
735 239 230	59	735 964 213	58	753 239 211	49
735 239 231	59	735 964 214	58	753 239 226	49
735 240 126	56	735 964 265	58	753 239 227	49
735 240 127	56	735 964 266	58	753 239 228	49
735 240 128	56	735 964 267	58	753 239 229	49
735 240 129	56	735 964 269	58	753 239 230	49
735 240 130	56	735 964 270	58	753 239 231	49
735 240 131	56	737 010 004	64	753 239 256	49
735 240 226	59	737 010 005	64	753 239 257	49
735 240 227	59	737 011 004	63	753 239 258	49
735 240 228	59	737 011 005	63	753 239 259	49
735 240 229	59	737 020 021	64	753 239 260	49
735 240 230	59	737 020 022	64	753 239 261	49
735 240 231	59	737 090 004	63	753 239 276	49
735 908 551	62	737 090 005	63	753 239 277	49
735 908 553	62	737 091 004	63	753 239 278	49
735 908 555	62	737 091 005	63	753 239 279	49
735 908 561	62	737 104 104	63	753 239 280	49
735 908 566	62	737 104 105	63	753 239 281	49
735 908 580	62	737 204 104	63	753 240 206	50
735 908 584	62	737 204 105	63	753 240 207	50
735 908 585	62	753 104 206	47	753 240 208	50
735 908 588	62	753 104 207	47	753 240 209	50
735 908 590	62	753 104 208	47	753 240 210	50
735 908 592	62	753 104 209	47	753 240 211	50
735 908 595	62	753 104 210	47	753 240 226	50
735 908 596	62	753 104 211	47	753 240 227	50

Index

Code	Page
753 240 228	50
753 240 229	50
753 240 230	50
753 240 231	50
753 900 804	14
753 900 806	14
753 900 807	14
753 900 831	14
753 900 832	14
753 900 866	14
753 900 867	14
753 900 870	14
753 900 872	14
753 900 873	14
753 900 874	14
753 900 875	14
753 900 876	14
753 900 877	14
753 900 880	14
753 900 881	14
753 900 882	14
753 900 884	14
753 900 885	14
753 900 886	14
753 900 887	14
753 900 888	14
753 900 889	14
753 900 890	14
753 900 891	14
753 900 892	14
753 900 893	14
753 900 894	14
753 900 895	14
753 900 896	14
753 900 898	14
753 900 899	14
753 901 064	14
753 901 065	14
753 901 072	14
753 901 658	13
753 901 831	13
753 901 833	13
753 901 834	13
753 901 835	13
753 901 836	13
753 901 837	13
753 901 838	13
753 908 637	53
753 908 641	53
753 908 642	53
753 908 646	53
753 908 647	53
753 908 648	53
753 908 652	53
753 908 653	53
753 908 654	53
753 908 658	53
753 908 659	53
753 908 660	53
753 908 664	53
753 908 665	53
753 908 666	53
753 908 670	53
753 908 671	53
753 908 676	53
753 908 677	53
753 908 680	53
753 908 684	53

Code	Page
753 908 685	53
753 908 688	53
753 908 690	53
753 908 692	53
753 908 695	53
753 908 696	53
753 908 697	53
753 911 610	12
753 911 611	12
753 911 612	12
753 911 613	12
753 911 614	12
753 911 615	12
753 911 616	12
753 911 817	12
753 911 818	12
753 911 819	12
753 911 820	12
753 911 821	12
753 911 822	12
753 911 823	12
753 964 206	48
753 964 207	48
753 964 208	48
753 964 209	48
753 964 210	48
753 964 211	48
753 964 212	48
753 964 213	48
753 964 214	48
753 964 215	48
753 964 216	48
753 964 217	48
753 964 219	48
753 964 220	48
761 066 794	74
761 066 836	74
790 105 081	68
790 105 082	68
790 105 083	68
790 105 084	68
790 105 096	68
790 105 126	68
790 131 005	69
790 132 001	70
790 133 009	71
790 136 002	72
790 136 003	72
790 136 004	72
790 136 005	72
790 136 006	72
790 136 007	72
790 136 008	72
790 136 009	72
790 136 010	72
790 136 011	72
790 136 012	72
790 136 014	72
790 136 015	72
790 309 003	74
790 309 004	74
799 198 041	17
799 298 000	73
799 298 001	73
799 298 002	73
799 298 003	73
799 298 010	73
799 298 016	73

Code	Page
799 298 017	73
799 298 023	74
799 298 028	74
799 299 001	74
799 299 002	74
799 299 003	74
799 299 004	74
799 299 005	74
799 300 260	71
799 300 270	71
799 300 280	71
799 300 290	71
799 300 300	71
799 300 310	71
799 300 320	71
799 300 330	71
799 300 340	71
799 350 580	69

General Condition of Supply of Georg Fischer Piping Systems Limited, Schaffhausen

1 General

- 1.1 These General Conditions shall apply to all Products supplied by Georg Fischer Piping Systems Limited («Georg Fischer») to the Purchaser. They shall also apply to all future business even when no express reference is made to them.
- 1.2 Any deviating or supplementary conditions especially Purchaser's general conditions of purchase and verbal agreements shall only be applicable if accepted in writing by Georg Fischer.
- 1.3 The written form shall be deemed to be fulfilled by all forms of transmission, evidenced in the form of text, such as telefax, e-mail, etc.

2 Tenders

Tenders shall only be binding if they contain a specifically stated period for acceptance.

3 Scope of Delivery

- 3.1 Georg Fischer's product range is subject to change.
- 3.2 The confirmation of order shall govern the scope and execution of the contract.

4 Data and Documents

- 4.1 Technical documents such as drawings, descriptions, illustrations and data on dimensions, performance and weight as well as the reference to standards are for information purposes only. They are not warranted characteristics and are subject to change.
- 4.2 All technical documents shall remain the exclusive property of Georg Fischer and may only be used for the agreed purposes or as Georg Fischer may consent.

5 Confidentiality, Protection of Personal Data

- 5.1 Each party shall keep in strict confidence all commercial or technical information relating to the business of the other party, of which it has gained knowledge in the course of its dealing with the other party. Such information shall neither be disclosed to third parties nor used for other purposes than those for which the information has been supplied.
- 5.2 In the context of the contractual relation with the Purchaser personal data may be processed. The Purchaser agrees to the disclosure of said data to third parties such as foreign subcontractors and suppliers etc.

6 Local Laws and Regulations, Export Controls

- 6.1 The Purchaser shall bring to the attention of Georg Fischer all local laws and regulations at the place of destination which bear connection with the execution of the contract and the adherence to relevant safety regulations and approval procedures.
- 6.2 In case of re-exports, Purchaser shall be responsible for compliance with pertinent export control regulations.

7 Price

- 7.1 Unless agreed otherwise, the prices shall be deemed quoted net ex works (according to Incoterms 2010 of the ICC, or latest version) including standard packing. All supplementary costs such as the cost of carriage, insurance, export-, transit- and import- licences etc. shall be borne by the Purchaser. The Purchaser shall also bear the costs of all taxes, fees, duties etc. connected with the contract.
- 7.2 If the costs of packing, carriage, insurance, fees and other supplementary costs are included in the tender price or contract price or are referred to specifically in the tender or confirmation of order, Georg Fischer reserve the right to revise their prices accordingly should any change occur in the relevant tariffs.

8 Terms of Payment

- 8.1 The Purchaser shall make payment in the manner agreed by the parties without any deductions such as discounts, costs, taxes or dues.
- 8.2 The Purchaser may only withhold or off-set payments due against counter claims which are either expressly acknowledged by Georg Fischer or finally awarded to the Purchaser. In particular, payment shall still be made when unessential items are still outstanding provided that the Products already delivered are not rendered unusable as a result.

9 Retention of Title

- 9.1 The Products shall remain the property of Georg Fischer until the Purchaser shall have settled all claims, present and future, which Georg Fischer may have against him.
- 9.2 Should the Purchaser resell Products to which title is reserved, in the ordinary course of business, he shall hereby be deemed to have tacitly assigned to Georg Fischer the proceeds deriving from their sale together with all collateral rights, securities and reservations of title until all claims held by Georg Fischer shall have been settled. Until revoked by Georg Fischer, this assignment shall not preclude Purchaser's right to collect the assigned receivables.
- 9.3 To the extent the value of the Products to which title is reserved together with collateral securities exceeds Georg Fischer's claims against the Purchaser by more than 20%, Georg Fischer shall re-assign the above proceeds to Purchaser at his request.

10 Delivery

- 10.1 The term of delivery shall commence as soon as the contract has been entered into, all official formalities such as import and payment permits have been obtained and all essential technical issues have been settled. The term of delivery shall be deemed duly observed when, upon its expiry, the Products are ready for despatch.
- 10.2 Delivery is subject to the following conditions, i.e. the term of delivery shall be reasonably extended:
- a) if Georg Fischer are not supplied in time with the information necessary for the execution of the contract or if subsequent changes causing delays are made by the Purchaser.
- b) if Georg Fischer are prevented from performing the contract by force majeure. Force majeure shall equally be deemed to be any unforeseeable event beyond Georg Fischer's control which renders Georg Fischer's performance commercially unpractical or impossible, such as delayed or defective supplies from sub contractors labour disputes, governmental orders or regulations, shortages in materials or energy, serious disturbances in Georg Fischer's works, such as the total or partial destruction of plant and equipment or the breakdown of essential facilities, serious disruptions in transport facilities, e.g. impassable roads. Should the effect of force majeure exceed a period of six (6) months, either party may cancel the contract forthwith. Georg Fischer shall not be liable for any damage or loss of any kind whatsoever resulting therefrom, any suspension or cancellation being without prejudice to Georg Fischer's right to recover all sums due in respect of consignments delivered and costs incurred to date.
- c) if the Purchaser is in delay with the fulfilment of his obligations under the contract, in particular, if he does not adhere to the agreed conditions of payment or if he has failed to timely provide the agreed securities.
- 10.3 If for reasons attributable to Georg Fischer the agreed term of delivery or a reasonable extension thereof is exceeded, Georg Fischer shall not be deemed in default until the Purchaser has granted to Georg Fischer in writing a reasonable extension thereof of not less than one (1) month which equally is not met. The Purchaser shall then be entitled to the remedies provided at law, it being however understood that, subject to limitations of Art. 16, damage claims shall be limited to max. 10% of the price of the delayed delivery.
- 10.4 Part shipments shall be allowed and Georg Fischer shall be entitled to invoice for such partial deliveries.
- 10.5 If the Purchaser fails to take delivery within a reasonable time of Products notified as ready for despatch, Georg Fischer shall be entitled to store the Products at the Purchaser's expense and risk and to invoice them as delivered. If Purchaser fails to effect payment, Georg Fischer shall be entitled to dispose of the Products.
- 10.6 Should Purchaser cancel an order without justification and should Georg Fischer not insist on the performance of the contract, Georg Fischer shall be entitled to a penalty amounting to 10% of the contract price, Georg Fischer's right to prove and claim higher damages remaining reserved.

Purchaser shall be entitled to prove, that Georg Fischer has suffered no or a considerably lower damage than the penalty forfeited.

11 Packing

If the Products are provided with additional packing over and above the standard packing, such packing shall be charged additionally.

12 Passing of Risk

- 12.1 The risk in the Products shall pass to the Purchaser as soon as they have left Georg Fischer's works (EX WORKS, Incoterms 2010 ICC, or latest version), even if delivery is made carriage-paid, under similar clauses or including installation or when carriage is organized and managed by Georg Fischer.
- 12.2 If delivery is delayed for reasons beyond Georg Fischer's control, the risk shall pass to the Purchaser when he is notified that the Products are ready for despatch.

13 Carriage and Insurance

- 13.1 Unless agreed otherwise, the Purchaser shall bear the cost of carriage.
- 13.2 The Purchaser shall be responsible for transport insurance against damage of whatever kind. Even when such insurance is arranged by Georg Fischer it shall be deemed taken out by the order of and for the account of the Purchaser and at his risk.
- 13.3 Special requests regarding carriage and insurance shall be communicated to Georg Fischer in due time. Otherwise carriage shall be arranged by Georg Fischer at their discretion, but without responsibility, by the quickest and cheapest method possible.
- In case of carriage-paid delivery transport arrangements shall be made by Georg Fischer. If the Purchaser specifies particular requirements, any extra costs involved shall be borne by him.
- 13.4 In the event of damage or loss of the Products during carriage the Purchaser shall mark the delivery documents accordingly and immediately have the damage ascertained by the carrier. Not readily ascertainable damages sustained during carriage shall be notified to the carrier within six (6) days after receipt of the Products.

14 Inspection, Notification of Defects and Damages

- 14.1 The Products will be subject to normal inspection by Georg Fischer during manufacture. Additional tests required by the Purchaser shall be agreed upon in writing and shall be charged to the Purchaser.
- 14.2 It shall be a condition of Georg Fischer's obligation under the warranties stated hereinafter that Georg Fischer be notified in writing by the Purchaser of any purported defect immediately upon discovery. Notice concerning weight, numbers or apparent defects is to be given latest within 30 days from receipt of the Products, notice of other defects immediately latest within seven (7) working days after discovery, in any event within the agreed warranty period.
- 14.3 Purchaser shall not dispose of allegedly defective Products until all warranty and/or damage claims are finally settled. At its request, defective Products are to be placed at Georg Fischer's disposal.
- 14.4 At its request, Georg Fischer shall be given the opportunity to inspect the defect and/or damage, prior to commencement of remedial work, either itself or by third party experts.

15 Warranty

- 15.1 At the written request of the Purchaser, Georg Fischer undertakes to repair or replace at its discretion, as quickly as possible and free of charge, all Products supplied which demonstrably suffer from faulty design, materials or workmanship, from faulty operating or installation instructions or which become defective or unusable due to faulty advice. In order to protect employees from toxic or radioactive substances which may have been transported through defective parts returned to Georg Fischer's sales organisation, said parts must be accompanied by a Material Safety Disclosure Form. The form may be obtained from Georg Fischer's local sales company or via www.piping.georgfischer.com. Replaced parts shall become property of Georg Fischer, unless Georg Fischer waives such claim.
- 15.2 For Products which are manufactured to specifications, drawings or patterns supplied by the Purchaser, Georg Fischer's warranty shall be restricted to proper materials and workmanship.
- 15.3 The Purchaser shall be entitled to rescind the contract or to demand a reduction of the contract price if
- the repair or replacement of the defective Product is impossible
 - the defective Product is not repaired or replaced within a reasonable period
 - Georg Fischer refuses the repair or replacement or if for reasons attributable to Georg Fischer the repair or replacement is delayed.
- 15.4 For Products or essential components manufactured by a third party and supplied by Georg Fischer under this contract, Georg Fischer's warranty is limited to the warranty provided by said third party.
- 15.5 This warranty shall not apply to damage resulting from normal wear and tear, improper storage and maintenance, failure to observe the operating instructions, overstressing or overloading, unsuitable operating media, unsuitable construction work or unsuitable building ground, improper repairs or alterations by the Purchaser or third parties, the use of other than original spare parts and other reasons beyond Georg Fischer's control.
- 15.6 No action or claim may be brought by the Purchaser on account of any alleged breach of warranty or any other obligation of Georg Fischer after the expiration of twelve (12) months from receipt of the Products by the end user or at the latest within eighteen (18) months of the Products being despatched by Georg Fischer.
- 15.7 In case of Products for use in domestic installations or in utilities
- Georg Fischer will assume the costs of dismantling the defective Product and restoring the damaged object up to CHF 1'000'000 per occurrence.
 - warranty or damage claims - contrary to Section 15.6 - are time-barred five (5) years from the date of installation or seven (7) years from the production date, whichever is earlier.

16 Limitation of Liability

The rights and remedies of the customer shall be exclusively governed by these General Conditions of Supply and shall be in lieu of any remedies at law. All further claims for damages, reduction of the purchase price, termination or rescission of the contract are excluded. In no case whatsoever shall the customer be entitled to claim damages other than compensation for costs of remedying defects in the supplies. This in particular refers, but shall not be limited, to loss of production, loss of use, loss of orders, loss of profit, third party recovery claims and other direct or indirect or consequential damages. This limitation of liability equally applies to the extent Georg Fischer is liable for acts or omissions of its employees or third parties engaged for the performance of its obligations. It does not apply in case of unlawful intent or gross negligence on the part of Georg Fischer's management and in case of Georg Fischer's statutory liability, in particular under applicable product liability laws.

17 Severability

Should any term or clause of these General Conditions in whole or in part be found to be unenforceable or void, all other provisions shall remain in full force and effect and the unenforceable or void provision shall be replaced by a valid provision, which comes closest to the original intention of the unenforceable or invalid provision.

18 Place of Performance and Jurisdiction

- 18.1 Place of performance for the Products shall be the Georg Fischer works from which the Products are despatched.
- 18.2 The contract shall be governed by Swiss law without regard to conflict of law provisions that would require the application of another law.
- 18.3 Any civil action based upon any alleged breach of this contract shall be filed and prosecuted exclusively in the courts of Schaffhausen, Switzerland. Georg Fischer however reserves the right to file actions in any court having jurisdiction over controversies arising out of or in connection with the present contract.

GF Piping Systems – worldwide at home

Our sales companies and representatives ensure local customer support in over 100 countries.

www.gfps.com



The technical data are not binding. They neither constitute expressly warranted characteristics nor guaranteed properties nor a guaranteed durability. They are subject to modification. Our General Terms of Sale apply.

Adding Quality to People's Lives

Argentina/Southern South America

Georg Fischer Central Plastics
Sudamérica S.R.L.
Buenos Aires, Argentina
Phone +5411 4512 02 90
gfccentral.ps.ar@georgfischer.com

Australia

George Fischer Pty Ltd
Riverwood NSW 2210 Australia
Phone +61(0)2 9502 8000
australia.ps@georgfischer.com
www.georgfischer.com.au

Austria

Georg Fischer
Rohrleitungssysteme GmbH
3130 Herzogenburg
Phone +43(0)2782 854 43-0
austria.ps@georgfischer.com
www.georgfischer.at

Belgium/Luxembourg

Georg Fischer NV/SA
1070 Bruxelles/Brüssel
Phone +32(0)2 556 40 20
be.ps@georgfischer.com
www.georgfischer.be

Brazil

Georg Fischer Sist. de Tub. Ltda.
04795-100 São Paulo
Phone +55(0)11 5525 1311
br.ps@georgfischer.com
www.georgfischer.com.br

Canada

Georg Fischer Piping Systems Ltd
Mississauga, ON L5T 2B2
Phone +1(905)670 8005
Fax +1(905)670 8513
ca.ps@georgfischer.com
www.georgfischer.ca

China

Georg Fischer Piping Systems Ltd
Shanghai 201319
Phone +86(0)21 3899 3899
china.ps@georgfischer.com
www.georgfischer.cn

Denmark/Iceland

Georg Fischer A/S
2630 Taastrup
Phone +45 (0)70 22 19 75
info.dk.ps@georgfischer.com
www.georgfischer.dk

Finland

Georg Fischer AB
01510 VANTAA
Phone +358 (0)9 586 58 25
Fax +358 (0)9 586 58 29
info.fi.ps@georgfischer.com
www.georgfischer.fi

France

Georg Fischer SAS
95932 Roissy Charles de Gaulle Cedex
Phone +33(0)1 41 84 68 84
fr.ps@georgfischer.com
www.georgfischer.fr

Germany

Georg Fischer GmbH
73095 Albershausen
Phone +49(0)7161 302-0
info.de.ps@georgfischer.com
www.georgfischer.de

India

Georg Fischer Piping Systems Ltd
400 076 Mumbai
Phone +91 224007 2001
in.ps@georgfischer.com
www.georgfischer.in

Italy

Georg Fischer S.p.A.
20063 Cernusco S/N (MI)
Phone +3902 921 861
it.ps@georgfischer.com
www.georgfischer.it

Japan

Georg Fischer Ltd
554-0011 Osaka,
Phone +81(0)6 6635 2691
jp.ps@georgfischer.com
www.georgfischer.jp

Korea

Georg Fischer Piping Systems
271-3 Seohyeon-dong Bundang-gu
Seongnam-si, Gyeonggi-do
Seoul 463-824
Phone +82 31 8017 1450
Fax +82 31 8017 1454
kor.ps@georgfischer.com
www.georgfischer.kr

Malaysia

Georg Fischer (M) Sdn. Bhd.
40460 Shah Alam, Selangor Darul Ehsan
Phone +60 (0)3 5122 5585
my.ps@georgfischer.com
www.georgfischer.my

Mexico/Northern Latin America

Georg Fischer S.A. de C.V.
Apodaca, Nuevo Leon
CP66636 Mexico
Phone +52 (81)1340 8586
Fax +52 (81)1522 8906
mx.ps@georgfischer.com
www.georgfischer.mx

Middle East

Georg Fischer
Piping Systems [Switzerland] Ltd.
Dubai, United Arab Emirates
Phone +971 4 289 49 60
gcc.ps@georgfischer.com
www.export.georgfischer.com

Netherlands

Georg Fischer N.V.
8161 PA Epe
Phone +31(0)578 678 222
nl.ps@georgfischer.com
www.georgfischer.nl

Norway

Georg Fischer AS
1351 Rud
Phone +47(0)67 18 29 00
no.ps@georgfischer.com
www.georgfischer.no

Poland

Georg Fischer Sp. z o.o.
05-090 Sekocin Nowy
Phone +48(0)22 31 31 0 50
poland.ps@georgfischer.com
www.georgfischer.pl

Romania

Georg Fischer
Piping Systems [Switzerland] Ltd.
020257 Bucharest - Sector 2
Phone +40(0)21 230 53 80
ro.ps@georgfischer.com
www.export.georgfischer.com

Russia

Georg Fischer
Piping Systems [Switzerland] Ltd.
Moscow 125047
Tel. +7 495 258 60 80
ru.ps@georgfischer.com
www.georgfischer.ru

Singapore

Georg Fischer Pte Ltd
528 872 Singapore
Phone +65(0)67 47 06 11
sgp.ps@georgfischer.com
www.georgfischer.sg

Spain/Portugal

Georg Fischer S.A.
28046 Madrid
Phone +34(0)91 781 98 90
es.ps@georgfischer.com
www.georgfischer.es

Sweden

Georg Fischer AB
117 43 Stockholm
Phone +46(0)8 506 775 00
info.se.ps@georgfischer.com
www.georgfischer.se

Switzerland

Georg Fischer
Rohrleitungssysteme [Schweiz] AG
8201 Schaffhausen
Phone +41(0)52 631 30 26
ch.ps@georgfischer.com
www.piping.georgfischer.ch

Taiwan

Georg Fischer Co., Ltd.
San Chung Dist., New Taipei City
Phone +886 2 8512 2822
Fax +886 2 8512 2823
www.georgfischer.tw

United Kingdom/Ireland

Georg Fischer Sales Limited
Coventry, CV2 2ST
Phone +44(0)2476 535 535
uk.ps@georgfischer.com
www.georgfischer.co.uk

USA/Caribbean

Georg Fischer LLC
Tustin, CA 92780-7258
Phone +1(714) 731 88 00
Toll Free 800 854 40 90
us.ps@georgfischer.com
www.gfppiping.com

Vietnam

Georg Fischer Pte Ltd
136E Tran Vu, Ba Dinh District, Hanoi
Phone +84 4 3715 3290
Fax +84 4 3715 3285

International

Georg Fischer
Piping Systems [Switzerland] Ltd.
8201 Schaffhausen/Schweiz
Phone +41(0)52 631 30 03
Fax +41(0)52 631 28 93
info.export@georgfischer.com
www.export.georgfischer.com

700.671.233

GFDO_8220_4b (03.13)

© Georg Fischer Rohrleitungssysteme AG
CH-8201 Schaffhausen/Schweiz, 2004
Printed in Germany

+GF+

GEORG FISCHER
PIPING SYSTEMS