

## COOL-FIT 4.0

# Pre-insulated system for industrial and commercial refrigeration

Increased efficiency and safety for food and beverage production  
and for the storage of food





GF Piping Systems

# Building the lifelines of the world

GF Piping Systems is the global specialist for the safe and reliable transportation of water, chemicals, and gas. Customers in more than 100 countries implement our solutions to work more safely, efficiently, and cost-effectively.

## Your partner for modern plastic systems

Customers in more than 100 countries are already working with the plastic piping systems that GF Piping Systems introduced more than 60 years ago. They are maintenance-free, resistant to corrosive and aggressive media, and are extremely durable. Their low weight, compared to metal systems, reduces static and logistic requirements. An innovative design and modern jointing technologies allow faster and easier installations. All this helps our customers to work more safely, efficiently, and cost-effectively. Support throughout the transition from metal to plastic systems is a key focus for our specialists.

## + Maintenance-free plastic

Plastics are corrosion-free and maintenance-free. They have excellent chemical resistance and last as long as the system itself, which is more than 25 years.

## + Complete system solutions

Our portfolio of more than 60,000 products offers complete system solutions, meaning you get perfectly matched components from a single source.

## + Local support

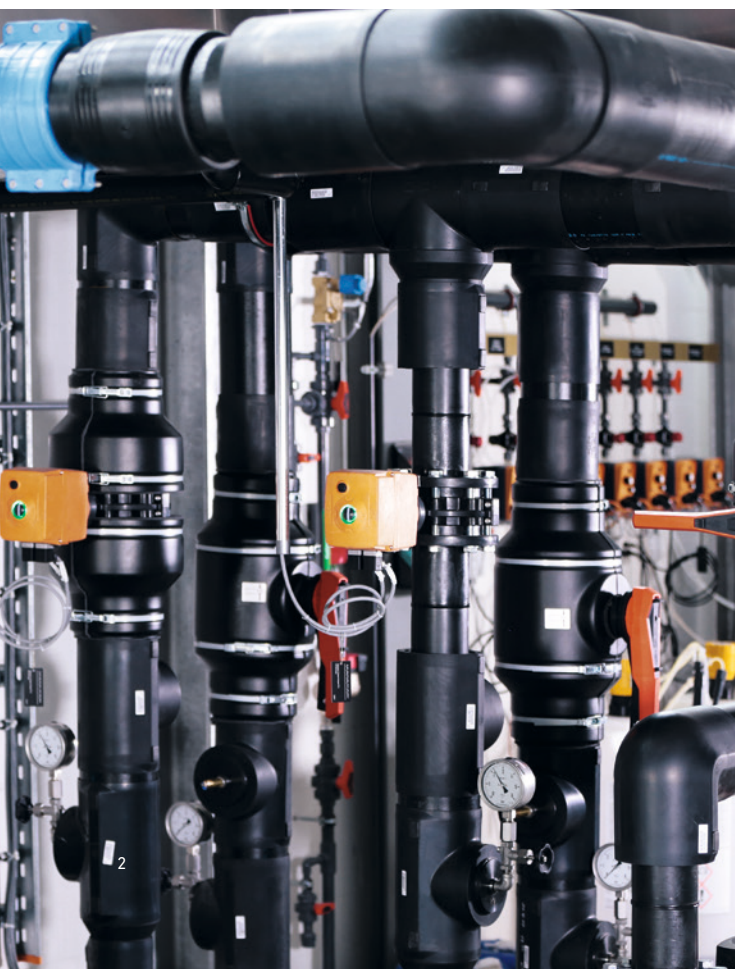
GF Piping Systems specialists are located in 34 countries and are therefore always close at hand, meaning that advice and on-site practical assistance is never far away.

## + Partner in all project phases

The specialists from GF Piping Systems support you throughout all phases of your project – starting from the planning stage, right through to commissioning. This reduces both the time required and risks.

## + Many years of experience

GF Piping Systems is a division of Georg Fischer AG, based in Schaffhausen, Switzerland, which was established in 1802. You benefit from our many years of experience.






### Efficient cooling with COOL-FIT 4.0

Poor insulation and corroding piping in cooling systems are more than just a nuisance, they pose a hazard to production safety and product quality. Moreover, they cause unnecessarily high maintenance and energy costs. GF Piping Systems offers solutions to help you to optimize your cooling system from the ground up. These solutions ensure continuous production processes, reduce operational downtimes due to leakages and other corrosion damage, and cut your maintenance and operating costs.

The pre-insulated COOL-FIT 4.0 piping system for commercial and industrial refrigeration is particularly beneficial for food and beverage manufacturers and processors. On the following pages, you will find out more about safe and efficient cooling with COOL-FIT 4.0 and how this system can support you.

## Content

<b>Building the lifelines of the world</b>	<b>2 – 3</b>
Partner with GF Piping Systems	
<b>Safe cooling has never been so easy</b>	<b>4 – 5</b>
The benefits of COOL-FIT for you	
<b>Increased safety and efficiency</b>	<b>6 – 9</b>
COOL-FIT 4.0 for commercial and industrial refrigeration	
<b>Applications</b>	<b>10 – 15</b>
COOL-FIT 4.0 in food and beverage production, cold stores, and breweries	
<b>Connected within just a few minutes</b>	<b>16</b>
Safe and reliable with electrofusion	
<b>Product range</b>	<b>18 – 39</b>
The entire COOL-FIT 4.0 product range	



COOL-FIT

# Safe, efficient cooling has never been so easy

COOL-FIT is the successful range of pre-insulated plastic piping systems from GF Piping Systems. It makes cooling applications more efficient than ever before – in all phases of your project. COOL-FIT simplifies planning and installation through superior design, pre-insulation, low weight, and modern jointing technologies. COOL-FIT reduces costs through completely maintenance-free operation, energy efficiency, and longevity (more than 25 years). COOL-FIT is environmentally friendly, thanks to its low carbon dioxide emissions throughout the entire service life of the product. The specialists at GF Piping Systems support you in this during all project phases.



## 100% maintenance-free

The media pipe, insulation, and jacket are made of plastic and therefore remain corrosion- and maintenance-free throughout the entire operating life of the system. This reduces expensive downtimes and lowers maintenance costs and personnel requirements.

## 100% reliable

The especially smooth interior surfaces of the medium pipe, typical for plastic systems, prevent deposits. The result: no loss of pressure over the entire service life. COOL-FIT remains as efficient as on its first day of operation.

## 65% less weight

COOL-FIT is significantly lighter than traditional metal systems and therefore places lower structural demands on buildings and supporting structures. The use of heavy transport aids can be reduced at the construction site.

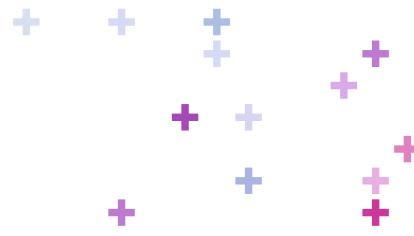
## 50% faster installation

Factory pre-insulation eliminates the need for traditional insulation after the installation, which often requires a second team. You receive finished and permanently pre-insulated components, ready for immediate installation.

## 30% higher energy efficiency

In combination, the low thermal conductivity of plastic and the highly efficient foam insulation increase the energy efficiency of your system. This helps you to save energy costs and makes your work more environmentally friendly.





## COOL-FIT 4.0

# Maximum safety and efficiency for your production

**COOL-FIT 4.0 is cutting-edge technology for users with the highest demands for production and process safety and for the storage of food. The pre-insulated piping system helps food and beverage manufacturers and processors to work at the highest level of safety and efficiency and to reduce costs.**

Industrial and commercial refrigeration involves much more than just regulated temperatures. The focus is on production and process safety as well as the preservation of stored food. COOL-FIT 4.0 is the perfect solution for food and beverage manufacturers and processors.

COOL-FIT 4.0 is the pre-insulated piping system for secondary cooling with brine, glycol, ethanol, and chilled water. It is ideal for temperatures ranging from  $-50^{\circ}\text{C}$  to  $60^{\circ}\text{C}$ . COOL-FIT 4.0 is cutting-edge technology that benefits fruit and vegetable processors, slaughterhouses, breweries, and supermarkets in particular. COOL-FIT 4.0 helps you to work with maximum efficiency and without disruption, while simultaneously reducing your maintenance and operating costs.

COOL-FIT 4.0 has the advantages of all COOL-FIT products compared to traditional metal systems:

- 100 % maintenance-free
- 100 % reliable
- 65 % less weight
- 50 % faster installation
- 30 % more energy-efficient

In addition, COOL-FIT 4.0 offers further key benefits:

### **Connected within just a few minutes**

COOL-FIT 4.0 allows for the simplest, safest, and fastest possible installation – no unnecessary or complicated tasks. The system can be installed neatly and easily. Electrofusion permanently connects pipes, fittings, and valves in just a few minutes.





# COOL-FIT for the environment

**COOL-FIT helps you to work in a more environmentally friendly and energy-efficient manner.**

Compared to post-insulated metal systems, COOL-FIT is considerably more environmentally friendly and helps to work more energy-efficiently. For example: a cold store uses 1500 meters of piping to transport cold water for the cooling system. COOL-FIT releases about 100 tons carbon dioxide less than a metal system during production and operation. This saving is equivalent to a journey of 446,000 kilometers by car.

## Outdoor installation

COOL-FIT 4.0 can also be installed outdoors without any problems. All surfaces are sealed, weatherproof, and UV-resistant. The sealing lip of the fittings surrounds the pipe and thus reliably protects the insulation from water and ice, ensuring a long service life.

## Constant quality control

Thanks to the very few installation steps and the use of electrofusion as the jointing technology, COOL-FIT 4.0 enables a degree of control that was previously impossible. Installation errors are largely excluded from the outset, which ensures a system of the highest possible quality.

## Clean and elegant system

Installing COOL-FIT 4.0 is safe and clean: no crumbling insulating foam, no sticky insulating tape or filling material, no open flame for closing the seals. The result is also aesthetically appealing, which is important for accessible plants and customer visits.



## + Carbon dioxide emission



## + Energy loss



COOL-FIT is on average 30 percent more energy efficient than metal piping systems that were subsequently insulated with rubber-based foam, in an otherwise identical installation.

# Leading technology for easy installation and longevity

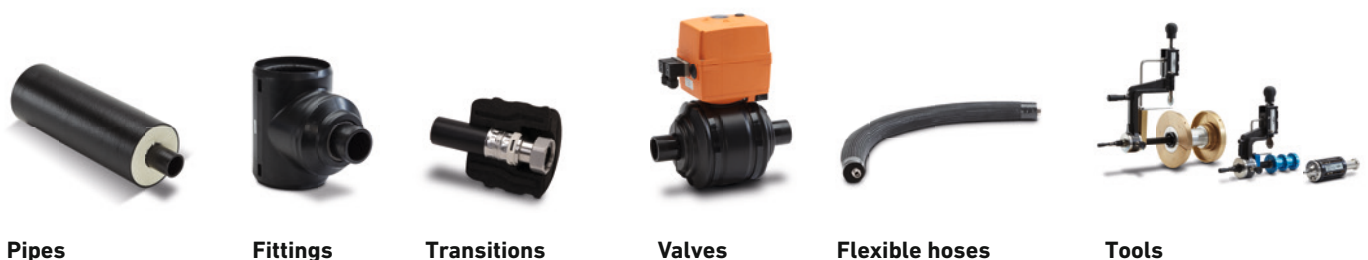
COOL-FIT 4.0 is the result of years of development by our engineers with the aim of making the system even easier and faster to install, yet at the same time, remaining as safe, reliable, and durable as you expect from all GF Piping Systems solutions. Many crucial details contribute to this.

## System properties

<b>Materials *</b>	Media pipe	PE100
	Insulation	GF HE foam, halogen-free, closed-pore
	Outer jacket	Pipe: HDPE, fitting: GF-HE
<b>Dimensions</b>		d32 mm (DN25) – d225 mm (DN200)
<b>Joining technology</b>		Electrofusion joint
<b>Pressure level</b>	d32 – d110	PN 16 bar, SDR 11
	d160 – d225	PN 10 bar, SDR 17
<b>Insulation</b>	Thermal conductivity $\lambda$ at 20°C	$\leq 0.022$ W/mK (d32 – d110), $\leq 0.026$ W/mK (d160 – d225)
	Density	$\geq 70$ kg/m <sup>3</sup>
	Foam cell size	max. $\varnothing$ 0.5 mm
	Thickness (nominal value)	40 mm
<b>Temperature</b>	Medium	-50 °C to 60 °C (ambient -30 °C to 60 °C)
<b>Weight</b> (without liquid)	Pipe d32 mm	1.41 kg/m
	Pipe d225 mm	16.6 kg/m
<b>Environment</b>	Resistance	Moisture- and vapor-proof
	Ozone Depletion Potential (ODP)	Zero
<b>Standards</b>	EN ISO 15494	Plastic piping systems for industrial applications – Metric series
	ISO 7	Fittings
	EN ISO 16135, EN ISO 16138	Industrial valves

\* All three materials are permanently connected.

## System components



Pipes

Fittings

Transitions

Valves

Flexible hoses

Tools

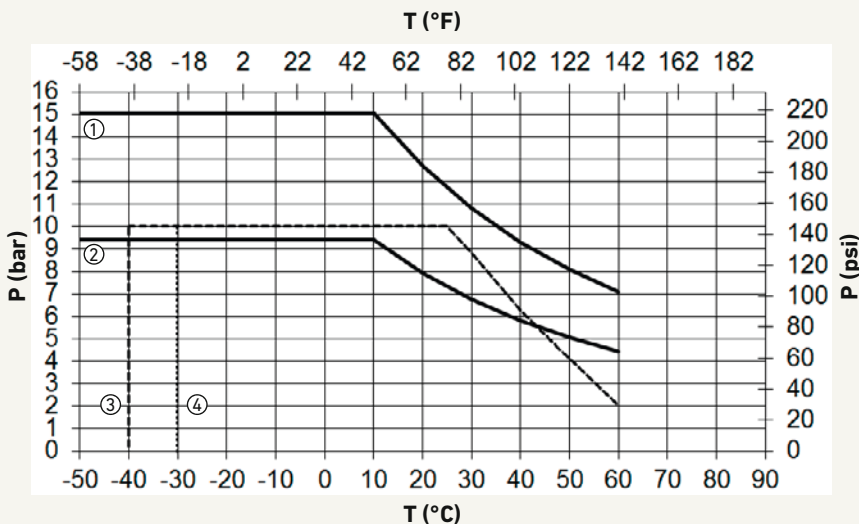




## Pressure / Temperature

Medium: Water

Minimum service life: 25 years



**Note:** With a water/glycol mixture  $\leq 50\%$ , the reduction factor for the pressure/temperature diagram 1.1 for pipes and fittings, and 1.7 for valves.

**For PN16 or PN10 the safety factor is 1.25**

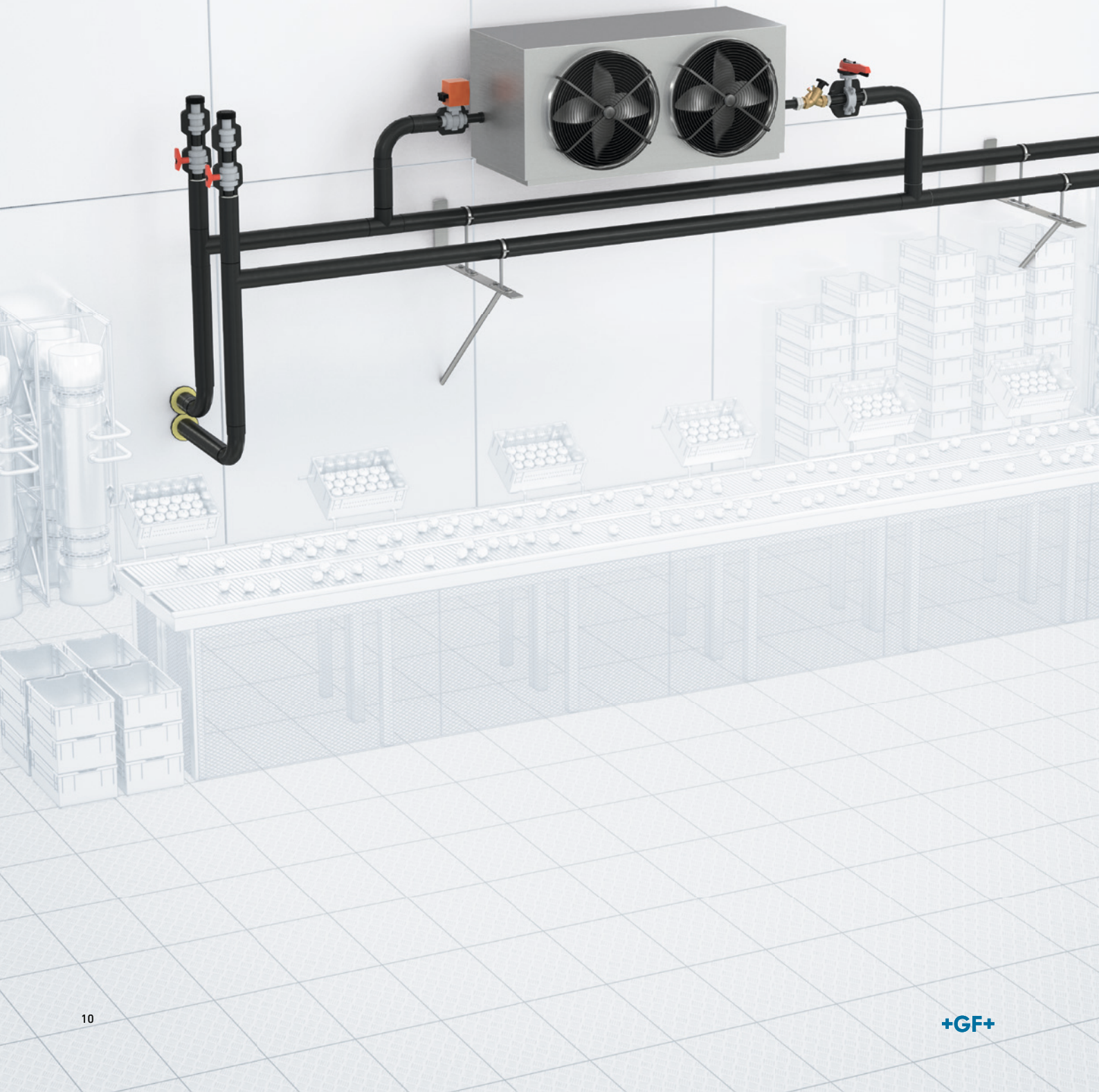
P Operating pressure of the medium (bar, psi)  
 T Temperature of the medium ( $^{\circ}\text{C}$ ,  $^{\circ}\text{F}$ )  
 C Safety factor

- ① COOL-FIT 4.0 pipe and fitting d32/D90 – d110/D180, C=1.6, SDR11
- ② COOL-FIT 4.0 pipe and fitting d160/D250 – d225/D315, C1.6, SDR17
- ③ COOL-FIT 4.0 ball valve PN10
- ④ COOL-FIT 4.0 butterfly valve PN10

Food and Beverage Production

# Reduced production costs

During the manufacturing and processing of food and beverages, reliable cooling is essential for production that is both faultlessly hygienic and economically efficient. COOL-FIT 4.0 eliminates the risk of downtimes caused by corrosion damage in the cooling system and helps to comply with increasing environmental regulations. COOL-FIT 4.0 is ideal for conversion of secondary cooling systems and connection to existing systems.





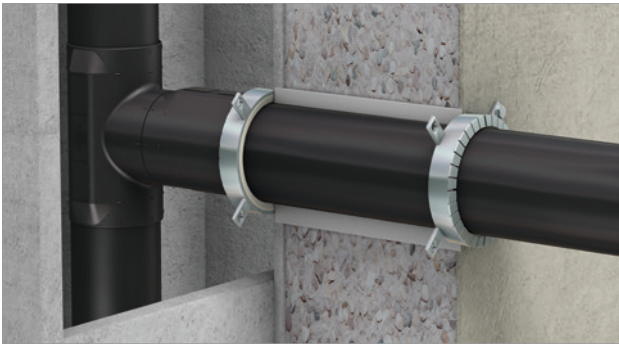
### Easy transitions to metal systems

The COOL-FIT 4.0 adapter fittings enable simple and fast transition to metal systems, valves, end devices, and chillers, allowing for effortless connection of adjacent systems.



### Pre-insulated electrofusion fittings

The range of COOL-FIT 4.0 fittings includes pre-insulated elbows, tees, couplers, and reducers. Electrofusion ensures secure joints within just a few minutes, with integrated quality control.



### Certified fire protection collars

Often, food and beverage production take places across several compact production areas. In the event of a fire, the fire protection collars reliably seal them off from each other for up to 120 minutes.



### Proven fixed point solutions

The fixed point solutions from GF Piping Systems can be welded easily onto the outer jacket. They ensure professional, tension-free installation of COOL-FIT 4.0, even under difficult fitting conditions.

## Your benefits

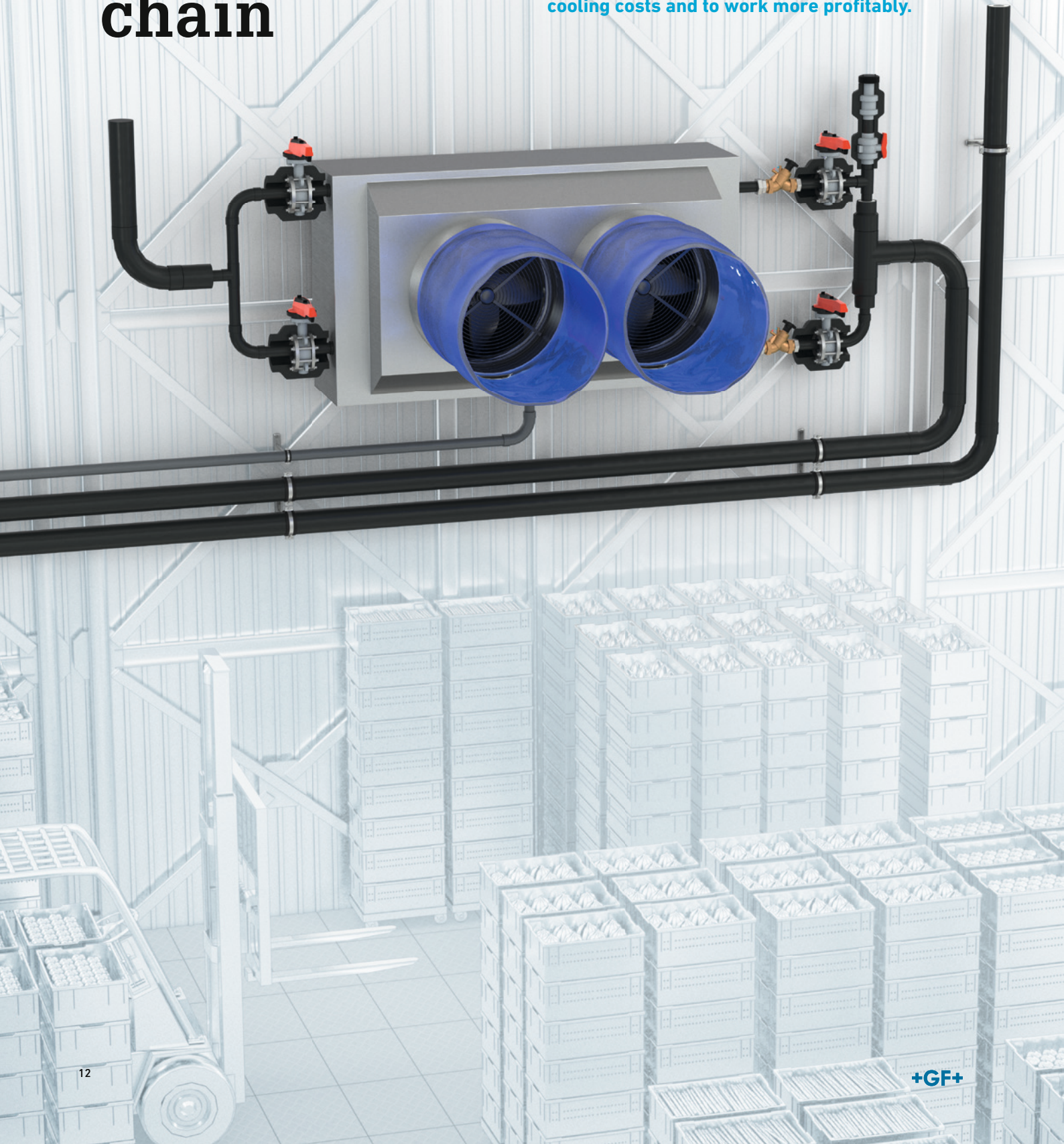
- Highest degree of protection from production downtimes and loss of goods caused by corrosion damage
- Ideal for conversion to secondary cooling to meet environmental regulations
- Fast installation and commissioning with pre-insulation and electrofusion
- Support throughout all project phases provided by local specialists from GF Piping Systems



Cold Stores

# Safety throughout the cold chain

In cold stores, the reliability of the system determines the preservation of the stock and thus the economic base of the company. COOL-FIT 4.0, as a high-quality plastic system, eliminates the risk of interruptions in the cold chain and product losses due to corrosion. The system can also be installed outdoors, if required. The outstanding insulation properties of COOL-FIT 4.0 make it possible to reduce cooling costs and to work more profitably.





### Pre-insulated pipes for fast installation

In cold stores, long, straight pipe sections are common due to their often considerable size. The pre-insulation of COOL-FIT 4.0 supports fast installation, with all pipes stripped at both ends at the factory.



### Uncomplicated flange connections

Connection to existing metal systems is made straightforward with the use of flange connections. The COOL-FIT 4.0 range includes the appropriate flange adaptor, which is precisely encased by the insulation shells.



### Pre-insulated butterfly valves

In addition to ball valves, butterfly valves are among the most frequently used valves in cold stores. They are pre-insulated in the COOL-FIT 4.0 system, just like all other system components. They are available from d110 to d225 as standard.



### Safe even when installed outdoors

In order to use production areas efficiently, it is often necessary to relocate part of the installation outdoors, such as on the roof. No problem for COOL-FIT 4.0: the system is watertight, weatherproof, and resistant to UV radiation.

## Your benefits

- Highest degree of protection against system failures by means of corrosion-free plastic components
- Safe outdoor installation (e.g. on the roof) without any additional protective elements
- Fast installation and commissioning with pre-insulation and electrofusion
- Support throughout all project phases provided by local specialists from GF Piping Systems



Breweries

# Corrosion-free production

Corrosion resistance is particularly important in breweries, because to the constant use of water and liquid primary products. COOL-FIT 4.0, as a pre-insulated plastic system, is ideal for this use, especially for control and conditioning the fermentation. The installation in historical production buildings and irregularly shaped storage cellars can be challenging. Our local specialists are available to support you during each project phase.





### Electrical valves with pre-insulation

In addition to butterfly valves, the COOL-FIT 4.0 range includes ball valves, operated manually or electrically. They are pre-insulated, as is the entire system, and are therefore as quick and easy to install as all the other components.



### Flexible hoses for the tanks

Fermentation tanks often have no clearly defined angles on their slightly irregular arched undersides, making it difficult to install normal fittings. Here, pre-insulated flexible hoses ensure a secure connection.



### Installation fittings for sensors

Sensors for measuring pressure, temperature, and other variables can be easily integrated with installation fittings. The sensors are screwed in, drilling is not necessary. This method reduces the risk of leakage.



### Range of tools and training

The tools from GF Piping Systems enable the installer to achieve a fast and high-quality installation of COOL-FIT 4.0. Our local specialists also provide support with training sessions, if required.

## Your benefits

- Cost reduction thanks to a corrosion-free, and thus maintenance-free, piping system
- Flexibility during system planning thanks to a wide range of pre-insulated components
- Fast installation and commissioning with pre-insulation and electrofusion
- Support throughout all project phases provided by local specialists from GF Piping Systems



## Installation

# Joined in minutes by electrofusion

The COOL-FIT 4.0 pipes, fittings, and valves can be connected neatly, easily, and within just a few minutes by electrofusion. Our specialists show the installation team how it is done, both on site and in a detailed video tutorial – step by step.

One of the most significant benefits of COOL-FIT 4.0 is the clean, simple, and fast installation. The installation team can easily interconnect pipes, fittings, and valves within just a few minutes, thanks to the exceptional design and the use of electrofusion. The pipe ends are already stripped when delivered, meaning that the installation can start without delay. The sealing lip of the fitting seals the insulation without any additional work.

Even installers without any training in welding find it easy to install COOL-FIT 4.0 and check the quality of the installation. We demonstrate and explain all necessary steps on site, as well as advise and train the installation team. Our detailed online video tutorial shows you how to correctly prepare and process COOL-FIT 4.0. Please notice the product manual and do not hesitate to contact the GF Piping Systems specialists in your area.



Clean the fusion zones of the fitting and pipe using Tangit PE-cleaner and a clean cloth.



Place the assembly aid on the fitting. Stretch the sealing lip pressing the handles together.



Slide both ends of the pipe into the fitting as far as the marking. Then remove the assembly aid.



Connect the welding cables to the welding contacts of the fitting and weld according to the instruction manual.

Here you can find the video video tutorial for the installation  
[www.gfps.com/cf4-installation](http://www.gfps.com/cf4-installation)



# How can COOL-FIT 4.0 help you?

## + Support from GF specialists

COOL-FIT 4.0 is a technically superior system. And it is more than the sum of its components, because it is supplemented by service from GF Piping Systems in all phases of your project – starting from the planning stage, right through to commissioning. You can find our local specialists in 34 countries, meaning they are always close at hand. This also allows for personal discussions at your company, as well as at the construction site during the installation phase.

With GF Piping Systems at your side, you can always count on having a competent contact person. This includes assistance with the necessary calculations, especially if you have little experience with plastic systems, as well as product selection, installation, and final quality inspection.

## + Next steps

- Consultation with your GF Piping Systems specialists
- Consultation on the benefits of COOL-FIT 4.0 for you
- Information on reference applications
- Assistance with product selection and making calculations
- Support throughout all project phases

Get in touch with us  
[gfps.com/cf4-contact](https://gfps.com/cf4-contact)



## COOLING Tool-Box

The cooling calculation tool from GF Piping Systems supports the dimensioning and design of the secondary circuit. The cooling calculation tool includes the following calculation functions:

- Expansion / contraction
- Length of the flexible sections
- Energy saving
- Surface temperatures
- Pipe dimensioning
- Pressure losses
- Dew point, including insulation strength
- Bracket spacing
- Freezing time
- Weight comparison
- CO<sub>2</sub> footprint

Use the online calculator  
[gfps.com/cooling-tools](https://gfps.com/cooling-tools)



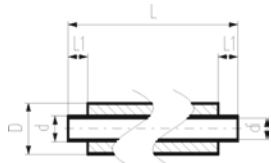
## COOL-FIT 4.0

# Product range



# COOL-FIT 4.0

## COOL-FIT 4.0 Pipes



### COOL-FIT 4.0 Pipe

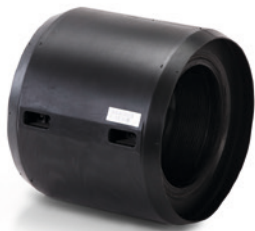
#### Model:

- Pre-insulated PE100 SDR11/17 metric
- Insulation made from GF HE foam
- Impact resistant. Color: black
- With free ends for electrofusion

\*d32/90 - d110/180 available as from Q4 2018

	d/D (mm)	DN (mm)	SDR	PN (bar)	Code	Weight (kg/m)	di (mm)	L (mm)	L1 (mm)	closest inch (inch)
*	32/90	25	11	16	<b>738 173 108</b>	1.411	26.2	5000	36	1
*	40/110	32	11	16	<b>738 173 109</b>	2.054	32.6	5000	40	1 ¼
*	50/110	40	11	16	<b>738 173 110</b>	2.221	40.8	5000	44	1 ½
*	63/125	50	11	16	<b>738 173 111</b>	2.987	51.4	5000	48	2
*	75/140	65	11	16	<b>738 173 112</b>	3.757	61.4	5000	55	2 ½
*	90/160	80	11	16	<b>738 173 113</b>	4.819	73.6	5000	62	3
*	110/180	100	11	16	<b>738 173 114</b>	6.200	90.0	5000	72	4
	160/250	150	17	10	<b>738 173 117</b>	9.921	141.0	5000	90	6
	225/315	200	17	10	<b>738 173 120</b>	16.620	198.2	5000	110	8

# COOL-FIT 4.0 Fittings

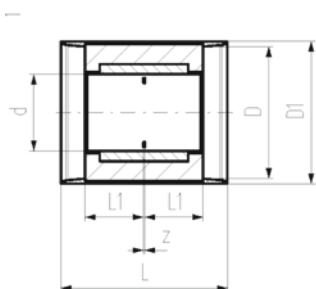


## COOL-FIT 4.0 Coupler

### Model:

- Pre-insulated PE100 SDR 11 metric
- Insulation made from GF HE foam
- Impact resistant. Color: black
- Integrated sealing lip, for a moisture-proof and vapour tight sealing

\*d32/90 - d110/180 available as from Q4 2018



	d/D (mm)	DN (mm)	PN (bar)	Code	Weight (kg)	D1 (mm)	L (mm)	L1 (mm)	z (mm)	closest inch (inch)
*	32/90	25	16	<b>738 913 108</b>	0.089	97	127	36	5	1
*	40/110	32	16	<b>738 913 109</b>	0.129	117	133	40	3	1 ¼
*	50/110	40	16	<b>738 913 110</b>	0.169	117	141	44	3	1 ½
*	63/125	50	16	<b>738 913 111</b>	0.240	132	149	48	3	2
*	75/140	65	16	<b>738 913 112</b>	0.520	147	163	55	3	2 ½
*	90/160	80	16	<b>738 913 113</b>	0.750	168	178	62	4	3
*	110/180	100	16	<b>738 913 114</b>	0.831	188	198	72	4	4
	160/250	150	16	<b>738 913 117</b>	1.726	258	233	90	3	6
	225/315	200	16	<b>738 913 120</b>	3.783	324	275	110	5	8

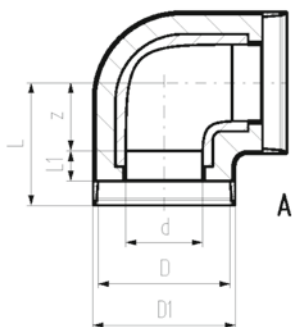


## COOL-FIT 4.0 Elbow 90°

### Model:

- Pre-insulated PE100 SDR11, metric
- Insulation made from GF HE foam
- Outer jacket impact resistant. Color: black
- A: Electrofusion Fitting with integrated sealing lip, for a water and vapour tight sealing

\*d32/90 - d110/180 available as from Q4 2018



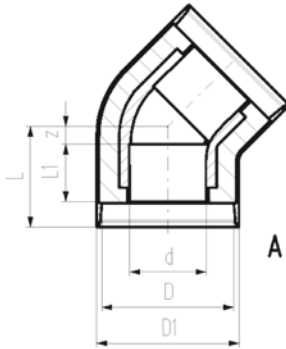
	d/D (mm)	PN (bar)	Code	Weight (kg)	D1 (mm)	L (mm)	L1 (mm)	z (mm)	closest inch (inch)	Type
*	32/90	16	<b>738 103 108</b>	0.255	97	81	36	20	1	A
*	40/110	16	<b>738 103 109</b>	0.177	117	88	40	23	1 ¼	A
*	50/110	16	<b>738 103 110</b>	0.250	117	99	44	30	1 ½	A
*	63/125	16	<b>738 103 111</b>	0.372	132	107	48	34	2	A
*	75/140	16	<b>738 103 112</b>	0.800	147	120	55	40	2 ½	A
*	90/160	16	<b>738 103 113</b>	1.500	168	150	62	63	3	A
*	110/180	16	<b>738 103 114</b>	1.950	188	174	72	77	4	A
	160/250	16	<b>738 103 117</b>	5.200	258	220	90	105	6	A
	225/315	16	<b>738 103 120</b>	12.400	324	345	110	210	8	A



### COOL-FIT 4.0 Elbow 45°

**Model:**

- Pre-insulated PE100 SDR11, metric
  - Insulation made from GF HE foam
  - Outer jacket impact resistant. Color: black
  - A: Electrofusion Fitting with integrated sealing lip, for a water and vapour tight sealing
- \*d32/90 - d110/180 available as from Q4 2018



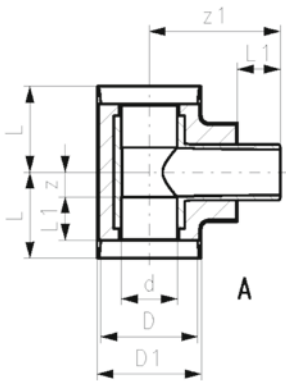
	d/D (mm)	PN (bar)	Code	Weight (kg)	D1 (mm)	L (mm)	L1 (mm)	z (mm)	closest inch (inch)	Type
*	32/90	16	<b>738 153 108</b>	0.108	97	72	36	11	1	A
*	40/110	16	<b>738 153 109</b>	0.162	117	76	40	11	1 ¼	A
*	50/110	16	<b>738 153 110</b>	0.218	117	82	44	13	1 ½	A
*	63/125	16	<b>738 153 111</b>	0.315	132	89	48	16	2	A
*	75/140	16	<b>738 153 112</b>	0.650	147	98	55	18	2 ½	A
*	90/160	16	<b>738 153 113</b>	1.030	168	117	62	30	3	A
*	110/180	16	<b>738 153 114</b>	1.270	188	138	72	41	4	A
	160/250	16	<b>738 153 117</b>	4.100	258	161	90	46	6	A
	225/315	16	<b>738 153 120</b>	17.603	324	278	110	143	8	A



### COOL-FIT 4.0 Tee 90° equal

**Model:**

- Pre-insulated PE100 SDR11, metric
  - Insulation made from GF HE foam
  - Outer jacket impact resistant. Color: black
  - A: Electrofusion Fitting with integrated sealing lip, for a water and vapour tight sealing
- \*d32/90 - d110/180 available as from Q4 2018



	d/D (mm)	PN (bar)	Code	Weight (kg)	D1 (mm)	L (mm)	L1 (mm)	z (mm)	z1 (mm)	closest inch (inch)	Type
*	32/90	16	<b>738 203 108</b>	0.161	97	79	36	18	118	1	A
*	40/110	16	<b>738 203 109</b>	0.257	117	87	40	22	132	1 ¼	A
*	50/110	16	<b>738 203 110</b>	0.342	117	94	44	25	138	1 ½	A
*	63/125	16	<b>738 203 111</b>	0.514	132	103	48	30	154	2	A
*	75/140	16	<b>738 203 112</b>	1.000	147	116	55	36	168	2 ½	A
*	90/160	16	<b>738 203 113</b>	1.400	1668	130	62	43	187	3	A
*	110/180	16	<b>738 203 114</b>	2.500	188	154	72	57	207	4	A
	160/250	16	<b>738 203 117</b>	5.600	258	192	90	77	263	6	A
	225/315	16	<b>738 203 120</b>	16.748	324	355	110	220	337	8	A

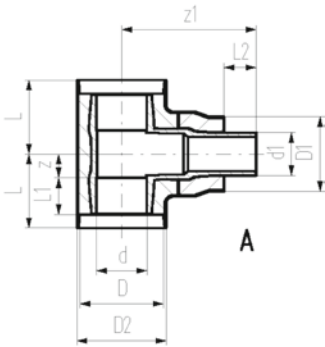


### COOL-FIT 4.0 Tee 90° reduced

**Model:**

- Pre-insulated PE100 SDR11, metric
  - Insulation made from GF HE foam
  - Outer jacket impact resistant. Color: black
  - A: Electrofusion Fitting with integrated sealing lip, for a water and vapour tight sealing
- \*d32/90 - d110/180 available as from Q4 2018

**A**



	d/D (mm)	d1/D1 (mm)	PN (bar)	Code	Weight (kg)
*	75/140	63/125	16	<b>738 203 218</b>	0.863
*	90/160	63/125	16	<b>738 203 222</b>	1.232
*	90/160	75/140	16	<b>738 203 223</b>	1.293
*	110/180	63/125	16	<b>738 203 227</b>	1.972
*	110/180	75/140	16	<b>738 203 228</b>	1.949
*	110/180	90/160	16	<b>738 203 229</b>	2.037
	160/250	63/125	16	<b>738 203 247</b>	5.150
	160/250	90/160	16	<b>738 203 249</b>	5.147
	160/250	110/180	16	<b>738 203 250</b>	5.220
	225/315	63/125	16	<b>738 203 264</b>	16.832
	225/315	90/160	16	<b>738 203 266</b>	16.889
	225/315	110/180	16	<b>738 203 267</b>	16.805
	225/315	160/250	16	<b>738 203 269</b>	18.500

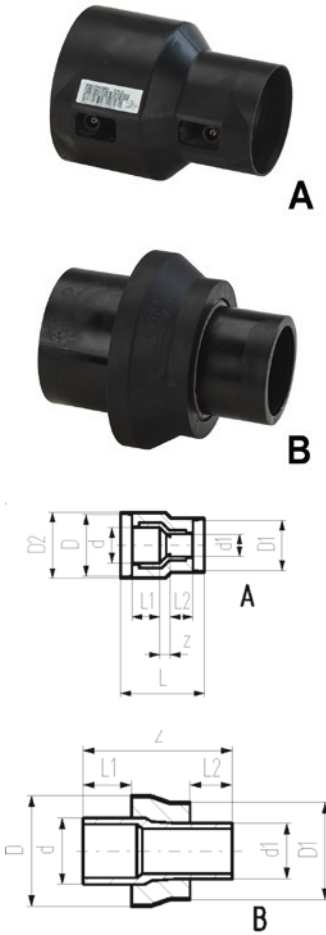
	d/D (mm)	d1/D1 (mm)	D2 (mm)	L (mm)	L1 (mm)	L2 (mm)	z (mm)	z1 (mm)	Closest inch (inch)	Type
*	75/140	63/125	147	116	55	48	36	228	2 ½	A
*	90/160	63/125	168	130	62	48	43	253	3 - 2	A
*	90/160	75/140	168	130	62	55	43	252	3 - 2 ½	A
*	110/180	63/125	188	154	72	48	57	267	4 - 2	A
*	110/180	75/140	188	154	72	55	57	268	4 - 2 ½	A
*	110/180	90/160	188	154	72	62	57	268	4 - 3	A
	160/250	63/125	258	192	90	48	77	327	6 - 2	A
	160/250	90/160	258	192	90	62	77	327	6 - 3	A
	160/250	110/180	258	192	90	72	77	325	6 - 5	A
	225/315	63/125	324	355	110	48	220	412	8 - 2	A
	225/315	90/160	324	355	110	62	220	412	8 - 3	A
	225/315	110/180	324	355	110	72	220	412	8 - 4	A
	225/315	160/250	324	355	110	90	220	396	8 - 5	A

## COOL-FIT 4.0 Reducer

### Model:

- Pre-insulated PE100 SDR11, metric
- Insulation made from GF HE foam
- Outer jacket impact resistant. Color: black
- A: Electrofusion Fitting with integrated sealing lip, for a water and vapour tight sealing
- B: Spigot Fitting with free end

\*d32/90 - d110/180 available as from Q4 2018



d/D (mm)	d1/D1 (mm)	PN (bar)	Code	Weight (kg)	D2 (mm)	L (mm)	L1 (mm)	L2 (mm)	z (mm)	Closest inch (inch)	Type
40/110	32/90	16	<b>738 903 206</b>	0.250	117	143	40	36	17	1 ½ - 1	A
50/110	32/90	16	<b>738 903 209</b>	0.280	117	151	44	36	21	1 ½ - 1	A
50/110	40/110	16	<b>738 903 210</b>	0.320	117	149	44	40	15	1 ½ - 1 ¼	A
63/125	32/90	16	<b>738 903 212</b>	0.217	132	160	48	36	26	2 - 1	A
63/125	40/110	16	<b>738 903 213</b>	0.232	132	159	48	40	21	2 - 1 ¼	A
63/125	50/110	16	<b>738 903 214</b>	0.243	132	159	48	44	17	2 - 1 ½	A
75/140	63/125	16	<b>738 903 318</b>	0.258			55	48	170	2 ½ - 2	B
90/160	63/125	16	<b>738 903 322</b>	0.381			62	48	190	3 - 2	B
90/160	75/140	16	<b>738 903 323</b>	0.416			62	55	189	3 - 2 ½	B
110/180	63/125	16	<b>738 903 327</b>	0.566			72	48	204	4 - 2	B
110/180	75/140	16	<b>738 903 328</b>	0.577			72	55	205	4 - 2 ½	B
110/180	90/160	16	<b>738 903 329</b>	0.644			72	62	205	4 - 3	B
160/250	63/125	16	<b>738 903 347</b>	1.298			90	48	244	6 - 2	B
160/250	90/160	16	<b>738 903 349</b>	1.323			90	62	244	6 - 3	B
160/250	110/180	16	<b>738 903 350</b>	1.362			90	72	242	6 - 5	B
225/315	63/125	16	<b>738 903 364</b>	2.960			110	48	295	8 - 2	B
225/315	90/160	16	<b>738 903 366</b>	3.018			110	62	295	8 - 3	B
225/315	110/180	16	<b>738 903 367</b>	3.079			110	72	295	8 - 4	B
225/315	160/250	16	<b>738 903 369</b>	3.550			110	90	279	8 - 5	B

## COOL-FIT 4.0 Installation fitting type 313



A

### Model:

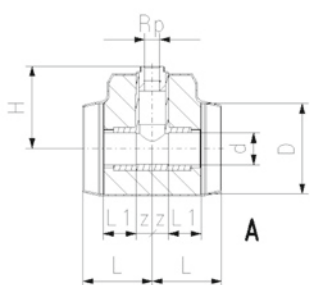
- Pre-insulated, PE100, SDR11, metric
- Insulation made from GF HE foam
- Impact resistant. Color: black
- With threaded branch for sensors (i.e temperature, pressure)
- A: Electrofusion Fitting with integrated sealing lip, for a water and vapour tight sealing
- B: Spigot Fitting with free end

### Note:

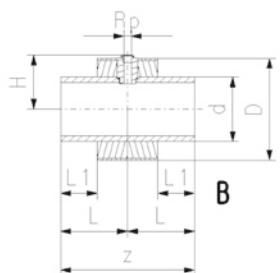
Available as from Q4 2018



B



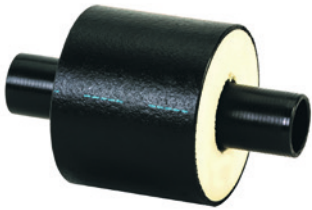
A



B

d/D (mm)	Rp (inch)	PN (bar)	Code	Weight (kg)	H (mm)	L (mm)	L1 (mm)	z (mm)	Type
32/90	½	16	<b>738 313 608</b>	0.169	92	79	36	18	A
40/110	½	16	<b>738 313 609</b>	0.267	102	87	40	22	A
40/110	¾	16	<b>738 313 659</b>	0.269	105	87	40	22	A
50/110	½	16	<b>738 313 610</b>	0.354	104	94	44	25	A
50/110	¾	16	<b>738 313 660</b>	0.356	107	94	44	25	A
63/125	½	16	<b>738 313 611</b>	0.537	117	103	48	30	A
63/125	¾	16	<b>738 313 661</b>	0.539	120	103	48	30	A
75/140	½	16	<b>738 313 612</b>	0.773	124	116	55	36	A
75/140	¾	16	<b>738 313 662</b>	0.774	127	116	55	36	A
90/160	½	16	<b>738 313 613</b>	1.164	136	130	62	43	A
90/160	¾	16	<b>738 313 663</b>	1.165	139	130	62	43	A
110/180	½	16	<b>738 313 614</b>	1.944	148	154	72	57	A
110/180	¾	16	<b>738 313 664</b>	1.944	151	154	72	57	A
160/250	½	16	<b>738 313 617</b>	2.496	134	165	90	330	B
160/250	¾	16	<b>738 313 667</b>	2.489	134	165	90	330	B
225/315	½	16	<b>738 313 620</b>	5.155	166	185	110	370	B
225/315	¾	16	<b>738 313 670</b>	5.146	169	185	110	370	B



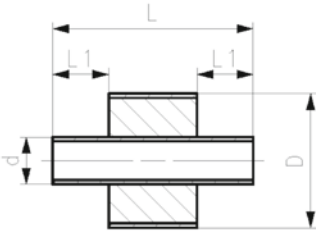


## COOL-FIT 4.0 Barrel nipple

### Model:

- Pre-insulated PE100 SDR11/17 metric
- Insulation made from GF HE foam
- Impact resistant. Color: black
- For short connections between COOL-FIT 4.0 Fittings Typ A

\*d32/90 - d110/180 available as from Q4 2018



	d/D (mm)	PN (bar)	SDR	Code	Weight (kg)	L1 (mm)	z (mm)	closest inch (inch)
*	32/90	16	11	<b>738 913 408</b>	0.126	36	151	1
*	40/110	16	11	<b>738 913 409</b>	0.188	40	155	1 ¼
*	50/110	16	11	<b>738 913 410</b>	0.226	44	163	1 ½
*	63/125	16	11	<b>738 913 411</b>	0.328	48	171	2
*	75/140	16	11	<b>738 913 412</b>	0.447	55	185	2 ½
*	90/160	16	11	<b>738 913 413</b>	0.631	62	199	3
*	110/180	16	11	<b>738 913 414</b>	0.929	72	219	4
	160/250	10	17	<b>738 913 417</b>	1.576	90	255	6
	225/315	10	17	<b>738 913 420</b>	3.254	110	295	8

# COOL-FIT 4.0 Transition Fittings



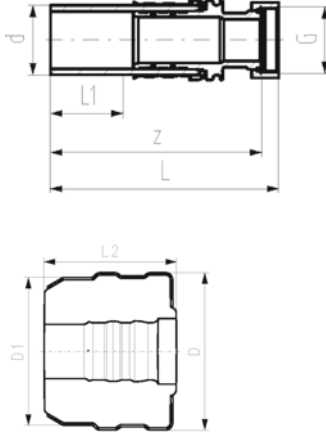
## COOL-FIT 4.0 Adaptor fitting PE/stainless steel with loose union nut G

### Model:

- Spigot fitting PE100 SDR11, metric with free end
- Stainless steel 1.4404 / 316L with female thread G
- Including flat seal EPDM
- Including insulation half shells

### Note:

Available as from Q4 2018



d (mm)	G (mm)	PN (bar)	Code	Weight (kg)	D (mm)	L (mm)	L1 (mm)	L12 (mm)	z (mm)
32	1/2"	16	<b>738 943 308</b>	0.250	104	133	36	101	126
32	3/4"	16	<b>738 943 318</b>	0.264	104	135	36	101	129
32	1"	16	<b>738 943 328</b>	0.296	104	135	36	101	129
40	1 1/4"	16	<b>738 943 309</b>	0.595	128	155	40	91	148
40	1 1/2"	16	<b>738 943 319</b>	0.655	128	157	40	91	148
50	1 1/2"	16	<b>738 943 310</b>	0.820	138	164	44	96	154
63	2"	16	<b>738 943 311</b>	1.307	149	186	48	103	170

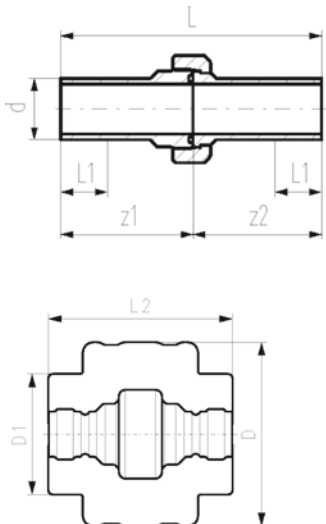
## COOL-FIT 4.0 Union PE/PE

### Model:

- Union bush: Spigot fitting PE100 SDR11, metric with free end
- Union End: Spigot fitting PE100 SDR11, metric with free end
- Gasket: O-ring EPDM Nr. 748 410 008-014
- Union Nut: PEGF25
- Including insulation half shells

### Note:

Available as from Q4 2018



d (mm)	PN (bar)	Code	Weight (kg)	D (mm)	D1 (mm)	L (mm)	L1 (mm)	L2 (mm)	z1 (mm)	z2 (mm)
32	16	<b>738 513 608</b>	0.223	139	90	211	36	139	107	104
40	16	<b>738 513 609</b>	0.363	153	110	234	40	158	118	116
50	16	<b>738 513 610</b>	0.437	165	110	247	44	163	124	123
63	16	<b>738 513 611</b>	0.584	185	125	268	48	176	136	132

### COOL-FIT 4.0 Adaptor Union PE/ABS

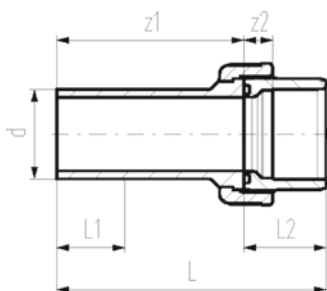


#### Model:

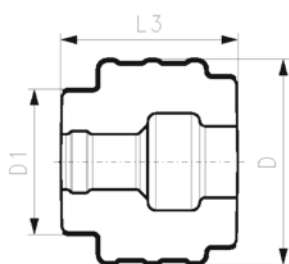
- Union bush: ABS Solvent cement socket
- Union End: Spigot fitting PE100 SDR11, metric with free end
- Gasket: O-ring EPDM Nr. 748 410 008-014
- Union Nut: ABS
- Including insulation half shells

#### Note:

Available as from Q4 2018



d (mm)	PN (bar)	Code	Weight (kg)	D (mm)	D1 (mm)	L (mm)	L1 (mm)	L2 (mm)	L3 (mm)	z1 (mm)	z2 (mm)
32	10	<b>738 513 708</b>	0.169	134	90	137	36	33	109	104	11
40	10	<b>738 513 709</b>	0.256	143	110	156	40	39	126	117	13
50	10	<b>738 513 710</b>	0.334	154	110	169	44	46	135	123	15
63	10	<b>738 513 711</b>	0.522	172	125	190	48	58	152	132	21
75	10	<b>738 513 712</b>	0.996	210	140	211	55	62	170	149	18
90	10	<b>738 513 713</b>	1.336	233	160	215	62	69	167	146	18
110	10	<b>738 513 714</b>	1.900	263	180	235	72	72	177	163	11



### COOL-FIT 4.0 Adaptor fitting PE/iFIT

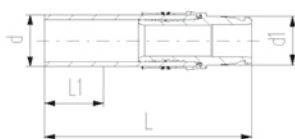


#### Model:

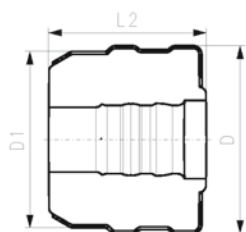
- Spigot fitting PE100 SDR11, metric with free end
- iFIT module stainless steel 1.4404 / 316L
- Including insulation half shells

#### Note:

Available as from Q4 2018



d (mm)	d1 (mm)	PN (bar)	Code	Weight (kg)	D (mm)	D1 (mm)	L (mm)	L1 (mm)	L2 (mm)
32	25-32	16	<b>738 943 108</b>	0.256	103	90	132	36	80





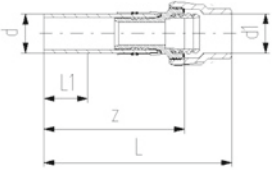
### COOL-FIT 4.0 Adaptor fitting PE/Sanipex MT

**Model:**

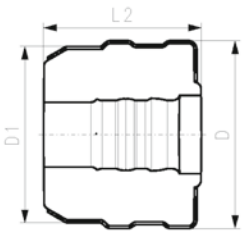
- Spigot fitting PE100 SDR11, metric with free end
- Sanipex MT Übergang Messing CuZn40Pb2
- Including insulation half shells

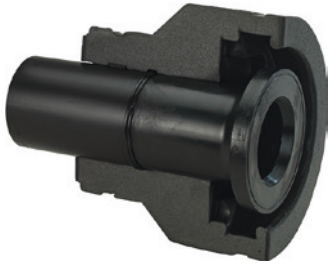
**Note:**

Available as from Q4 2018



d	d1	PN	Code	Weight	D	D1	L	L1	L2	z
(mm)	(mm)	(bar)		(kg)	(mm)	(mm)	(mm)	(mm)	(mm)	(mm)
32	32	10	<b>738 953 118</b>	0.476	104	90	174	36	101	135

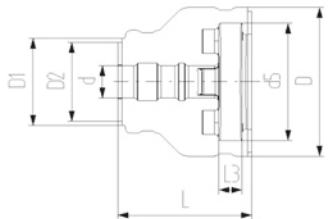
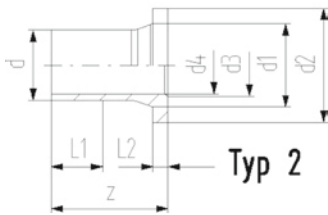
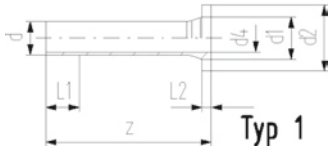




## COOL-FIT 2.0/4.0 Flange adaptor

### Model:

- PE100 SDR11, metric
- Suitable for flange connections to metric (from d110 also to ANSI/ASME B16.5)
- Gasket: Profile flange gasket NBR No. 45 44 07, EPDM No. 48 44 07
- Type 1 without chamfer, Type 2 with chamfer
- Separate Fittings type A needed for joining



d (mm)	DN (mm)	PN	Code	Weight (kg)
32	25	16	<b>738 710 008</b>	0.051
40	32	16	<b>738 710 009</b>	0.075
50	40	16	<b>738 710 010</b>	0.900
63	50	16	<b>738 710 011</b>	0.173
75	65	16	<b>738 710 012</b>	1.210
90	80	16	<b>738 710 013</b>	1.193
110	100	16	<b>738 710 014</b>	1.574
140	125	16	<b>738 710 016</b>	2.412
160	150	16	<b>738 710 017</b>	1.748
225	200	16	<b>738 710 020</b>	3.073

d (mm)	DN (mm)	D (mm)	D1 (mm)	D2 (mm)	L (mm)	L1 (mm)	L2 (mm)	L3 (mm)	z (mm)	d1 (mm)	d2 (mm)	d3 (mm)	d4 (mm)	d5 (mm)	Type
32	25	135	90	75	162	36	10	26	190	40	68		26	121	1
40	32	170	110	90	165	40	11	28	197	50	78		32	146	1
50	40	180	110	90	178	44	12	30	214	61	88		40	156	1
63	50	200	125	110	230	48	14	32	270	75	102		51	171	1
75	65	220	140	125	232	55	16	34	279	89	122		61	191	2
90	80	240	160	140	245	62	17	35	299	105	138	78	73	206	2
110	100	270	180	160	254	72	18	36	320	125	158	100	90	235	2
140	125	300	225	200	299	84	25	38	383	155	188	127	127	256	2
160	150	358	259		332	90	25	34	412	174	213	151	131	295	2
225	200	423	325		383	110	32	37	462	233	268	209	184	354	2

# COOL-FIT 4.0 Valves



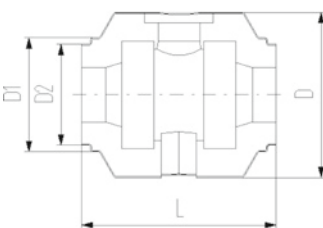
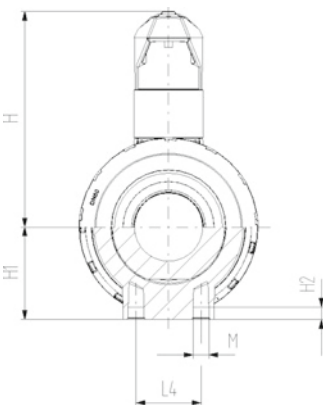
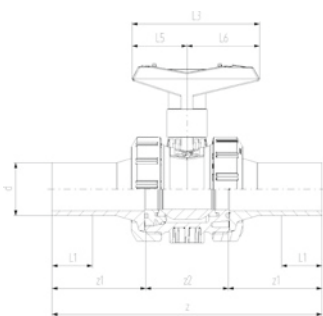
## COOL-FIT 4.0 Ball valve type 546, hand-operated

### Model:

- Material: ABS with spigot PE100 SDR11, metric
- Ball seals PTFE
- Integrated stainless steel mounting inserts
- Including insulation half shells
- Separate Fittings type A needed for joining

### Note:

Available as from Q4 2018



d (mm)	DN (mm)	PN	kv-value ( $\Delta p=1$ bar) (L/min)	EPDM Code	Weight (kg)
32	25	16	700	<b>138 546 108</b>	0.542
40	32	16	1000	<b>138 546 109</b>	0.887
50	40	16	1600	<b>138 546 110</b>	1.165
63	50	16	3100	<b>138 546 111</b>	2.100
75	65	16	5000	<b>138 546 112</b>	5.125
90	80	16	7000	<b>138 546 113</b>	7.173

d (mm)	DN (mm)	D (mm)	D1 (mm)	D2 (mm)	L (mm)	L1 (mm)	L3 (mm)	H (mm)	H1 (mm)	H2 (mm)	z (mm)	z1 (mm)	z2 (mm)	closest inch (inch)
32	25	135	97	82	152	36	97	98	36	12	223	76	76	1
40	32	157	117	97	170	40	128	119	44	15	249	82	82	1 ¼
50	40	169	117	97	184	44	128	125	51	15	271	91	91	1 ½
63	50	204	132	117	227	48	152	150	64	15	321	110	110	2
75	65	235	147	132	276	55	270	194	85	15	386	125	125	2 ½
90	80	255	168	147	297	62	270	200	105	15	421	140	140	3

## COOL-FIT 4.0 Ball valve type 179, electric

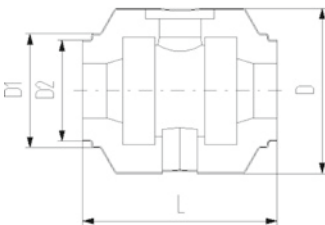
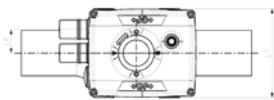
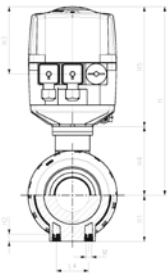
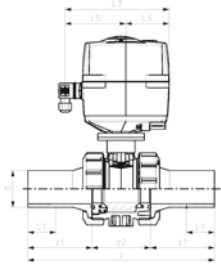


### Model:

- Material: ABS with spigot PE100 SDR11, metric
- Ball seals PTFE
- Integrated stainless steel mounting inserts
- Voltage 100-230V, 50-60Hz
- Factory set control range 90°
- Heating element, position feedback (Open/Close/ Middle)
- Including insulation half shells
- Separate Fittings type A needed for joining

### Note:

Available as from Q4 2018



d (mm)	DN (mm)	PN (bar)	kv-value (dp=1bar)	Code	Weight (kg)
32	25	16	700	<b>138 546 208</b>	2.838
40	32	16	1000	<b>138 546 209</b>	3.174
50	40	16	1600	<b>138 546 210</b>	3.452
63	50	16	3100	<b>138 546 211</b>	4.475
75	65	16	5000	<b>138 546 212</b>	7.156
90	80	16	7000	<b>138 546 213</b>	8.488

d (mm)	DN (mm)	D (mm)	D1 (mm)	D2 (mm)	L (mm)	L1 (mm)	L3 (mm)	L4 (mm)	H (mm)	H1 (mm)	H2 (mm)	z (mm)	z1 (mm)	z2 (mm)	M
32	25	135	97	82	152	36	190	25	228	36	12	223	76	71	M6
40	32	157	117	97	170	40	190	45	240	44	15	249	82	85	M8
50	40	169	117	97	184	44	190	45	246	51	15	271	91	89	M8
63	50	204	132	117	227	48	190	45	263	64	15	321	110	101	M8
75	65	235	147	132	276	55	190	70	322	85	15	386	125	136	M8
90	80	255	168	147	297	62	190	70	357	105	15	421	140	141	M8

d (mm)	DN (mm)	closest inch (inch)
32	25	1
40	32	1 ¼
50	40	1 ½
63	50	2
75	65	2 ½
90	80	3

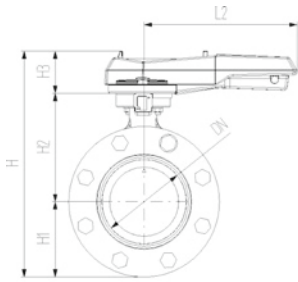


## COOL-FIT 4.0 Butterfly valve kit type 567, hand-operated

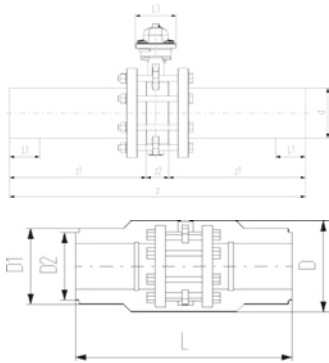
### Model:

- Material: ABS with spigot PE100 SDR11, metric
- Including flange adaptors, backing flanges PP-Steel, bolts and insulation half shells
- Separate Fittings type A needed for joining

\* d110 DN100 available as from Q4 2018



d (mm)	DN (mm)	PN	kv-value ( $\Delta p=1$ bar) (L/min)	EPDM Code	Weight (kg)
110	100	10	6500	<b>138 567 114</b>	8.950
160	150	10	16600	<b>138 567 117</b>	17.975
225	200	10	39600	<b>138 567 120</b>	28.316



d (mm)	DN (mm)	D (mm)	D1 (mm)	D2 (mm)	L (mm)	L1 (mm)	L2 (mm)	L3 (mm)	H (mm)	H1 (mm)	H2 (mm)	H3 (mm)	z (mm)	z1 (mm)	z2 (mm)
110	100	310	188	168	556	72	255	106	325	104	167	55	696	320	56
160	150	358	259		720	90	255	115	143	143	203	55	895	412	72
225	200	409	325		776	110	408	149	465	170	210	85	996	462	73

d (mm)	DN (mm)	closest inch (inch)
110	100	4
160	150	5
225	200	8



## COOL-FIT 4.0 Butterfly valve kit type 145, electric

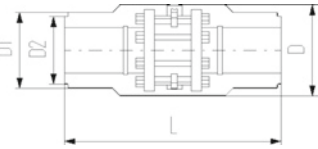
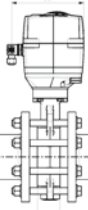
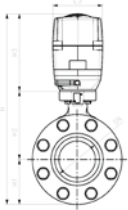


### Model:

- Material: ABS with spigot PE100 SDR11, metric
- Voltage 100-230V, 50-60Hz
- Factory set control range 90°
- Heating element, position feedback (Open/Close/ Middle)
- Including flange adaptors, backing flanges PP-Steel, bolts and insulation half shells
- Separate Fittings type A needed for joining

### Note:

\* d110 DN100 available as from Q4 2018



	d (mm)	DN (mm)	PN	kv-value ( $\Delta p=1$ bar) (l/min)	EPDM Code	Weight (kg)
*	110	100	10	6500	<b>138 567 214</b>	13.320
	160	150	10	16500	<b>138 567 217</b>	22.346
	225	200	10	39600	<b>138 567 220</b>	36.037

	d (mm)	DN (mm)	D (mm)	D1 (mm)	D2 (mm)	L (mm)	L1 (mm)	L2 (mm)	L3 (mm)	H (mm)	H1 (mm)	H2 (mm)	H3 (mm)	z (mm)	z1 (mm)
*	110	100	310	188	168	552	72	179	122	460	104	167	190	696	320
	160	150	358	259		720	90	179	122	535	143	203	190	895	412
	225	200	409	325		776	110	179	122	580	170	210	200	996	462

	d (mm)	DN (mm)	z2 (mm)	closest inch (inch)
*	110	100	56	4
	160	150	72	6
	225	200	73	8

# COOL-FIT 4.0 Accessories



## COOL-FIT 4.0 Assembly Aid-Kit

### Model:

- For simplified mounting of COOL-FIT 4.0 Fitting on COOL-FIT 4.0 Pipe
- \* d32-d110 available as from Q4 2018

	d (mm)	D (mm)	Code	Weight (kg)	pieces/kit
*	32 - 225	90 - 315	<b>799 738 501</b>	2.000	2 / Dimension
*	32	90	<b>799 738 511</b>	0.640	6
*	40 - 50	110	<b>799 738 512</b>	0.760	6
*	63	125	<b>799 738 513</b>	0.840	6
*	75	140	<b>799 738 514</b>	0.939	6
*	90	160	<b>799 738 515</b>	1.060	6
*	110	180	<b>799 738 516</b>	1.180	6
	160	250	<b>799 738 519</b>	0.775	4
	225	315	<b>799 738 522</b>	0.950	4



## COOL-FIT 4.0 Insulation for welding indicator-kit

### Model:

- Type A suitable for COOL-FIT 4.0 Fittings d32-d110
- Type B suitable for COOL-FIT 4.0 Fittings d160 and coupler d225
- Type C suitable for COOL-FIT 4.0 Fittings d225 except coupler

d (mm)	Code	Weight (kg)	Type	pieces/kit
32 - 110	<b>738 010 052</b>	0.090	A	20
160 - 225	<b>738 010 053</b>	0.200	B	10
225	<b>738 010 054</b>	0.033	C	10

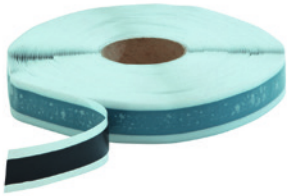


## COOL-FIT 4.0 Sealing clamp-kit

### Model:

- Supports the function of the top sealing lip of COOL-FIT 4.0 Fittings for vertical installations outdoor
- Material: stainless steel 304/V2A
- Color: black
- \* d32-d110 available as from Q4 2018

	d (mm)	D (mm)	Code	Weight (kg)	pieces/kit
*	32	90	<b>738 013 013</b>	0.100	6
*	40 - 50	110	<b>738 013 014</b>	0.050	6
*	63	125	<b>738 013 015</b>	0.050	6
*	75	140	<b>738 013 016</b>	0.050	6
*	90	160	<b>738 013 017</b>	0.050	6
*	110	180	<b>738 013 018</b>	0.050	6
	160	250	<b>738 013 021</b>	0.390	6
	225	315	<b>738 013 023</b>	0.450	6

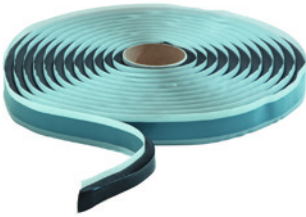


### COOL-FIT 4.0 Sealing tape

**Model:**

- Supports the function of the top sealing lip of COOL-FIT 4.0 Fittings for vertical installations outdoor
- 30m on a roll, 25mm width, buthylene rubber-based

d (mm)	D (mm)	Code	Weight (kg)
32 - 225	90 - 315	<b>738 013 031</b>	1.400



### COOL-FIT 4.0 Transition of Insulation

**Model:**

- For a moistur-proof and vapour tight transition of insulations from COOL-FIT 4.0 to COOL-FIT 2.0
- 4.5m on a roll, buthylene rubber-based

**Note:**

Available as from Q4 2018

d (mm)	D (mm)	Code	Weight (kg)
32-110	90-180	<b>738 013 041</b>	1.400



### Long adapters

- Adapters for Electrofusion units with 4 mm connectors.
- Longer version, suitable for all COOL-FIT 4.0 dimensions.

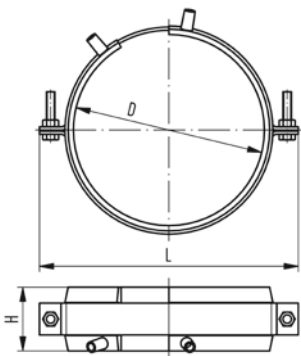
Type	Code	Weight (kg)	Description
4,0 mm	<b>790 128 035</b>	0.058	Angle adapters pair, black



### COOL-FIT 4.0 fixed point

**Model:**

- The product consists of two components namely electrofusion tapes and pipe brackets.
- Electrofusion welded tape as permanent connection to transmit the forces that occur in the pipe to the fixed point.
- The delivered pipe brackets are needed to deliver welding pressure during installtion and give stability during operation.
- For welding, use an MSA2.x, MSA4.x, MSA 250, 300, 350, 400 or commercially available 220 V fusion machines.
- If you use an MSA fusion machine from GF Piping Systems, use the 799 350 339 adapter or the 790 156 032 y-cable set.
- Please take note of the maximum allowed forces for this version in the table below.
- **Fixed point brackets and cross braces have to be calculated and obtained by the installer. They are not included in the fixed point set from GF.**



D (mm)	d (mm)	Code	Weight (kg)	L (mm)	H (mm)	max Force (kN)	Closest inch (inch)
90	32	<b>738 912 013</b>	0.895	170	60	2.0	1 ¼ - 1 ½
110	40 - 50	<b>738 912 014</b>	0.904	180	60	3.0 / 5.0	2
125	63	<b>738 912 015</b>	1.103	215	60	8.0	2 ½
140	75	<b>738 912 016</b>	1.188	220	60	10.0	3
160	90	<b>738 912 017</b>	1.177	255	60	10.0	4
180	110	<b>738 912 018</b>	1.530	255	60	10.0	4
250	160	<b>738 912 021</b>	1.957	335	60	10.0	6
315	225	<b>738 912 023</b>	2.388	400	60	10.0	8



### COOL-FIT Y cables kit

- The COOL-FIT Y cables are used to speed up the installation of the fixed points electrofusion tapes. The Y cables allow the welding in parallel of 2 E-Tapes, halving the total duration of the fusion process.
- Compatible with all MSA Units

Type	Code	Weight (kg)
4 leads cable with 2mm plugs in output	<b>790 156 032</b>	0.385



### Tangit KS Cleaner

- Special cleaner for plastic fusion connections in the material of PP, PE, PVDF and PB
- Suitable for Tangit Rapid. Must not be used for solvent cementing
- DVGW approved
- DW 5290 BR 0464

Size	Code	Weight (kg)
1 liter	<b>799 298 023</b>	0.872



### Marker

Type	Code	Weight (kg)
silver	<b>799 350 364</b>	0.010

# COOL-FIT 4.0 Tools



## COOL-FIT 2.0/4.0 Foam removal and peeling tool

### Model:

- Tool for foam removal and peeling of COOL-FIT 2.0 and 4.0 pipes

d (mm)	Code	Weight (kg)
32-90	<b>799 738 001</b>	10.500
110-225	<b>799 738 003</b>	16.500



## COOL-FIT 2.0/4.0 Powered foam removal and peeling tool

### Model:

- Tool for foam removal and peeling of COOL-FIT 2.0 and 4.0 pipes
- For usage in combination with drill drivers (not included)

d (mm)	Code	Weight (kg)
32-63	<b>799 738 201</b>	10.500



### MSA 2.1 Automatic Electrofusion Unit with protocols retrieval

The MSA 2.1 automatic electro fusion unit combines light weight and high efficiency, thanks to its inverter technology and furthermore provides fusion documentation in PDF. The unit is extremely fast and simple, with three basic operations required to operator: connect, scan, start the fusion. It is robust, safe and ergonomic.

All is meant to simplify the job: the barcode scanner, for long distance reading, the cooling system to joint in series, the icon system, to keep the interaction between user and machine intuitive. The entire welding process is controlled and regulated with energy output compensation depending on ambient temperature and the indication of cooling time.

The unit has 1000 protocols permanently stored in the internal memory. The user can copy the fusion reports in an USB stick to print them out in PDF format.

Scope of delivery includes: transport box, angle adapters (4.0 mm and 4.7 mm), operating instructions, START/STOP badge and USB memory stick with PC applications.

#### Technical Data:

- Operating temperature: -20°C to +50°C
- Mains voltage: 230V (190V - 265V)
- Mains frequency: 50-60 Hz
- Fusion voltage: 8-42 V (48 V)
- Fusion data input mode: bar code, manual
- Fusion current: 90 A (max)
- Suggested power generators: 3.5 kVA
- Fittings range: d20-1200 mm
- Protocols format: PDF and binary (compatible with mini Welding Book)
- USB Port: Type A
- Protection factor: Class 1 / IP 65
- Mains cable: 4 m
- Fusion cable: 4 m
- Weight: ca. 11.9 kg
- Display: Graphical LCD, adjustable contrast
- Independent from languages

	Type	Code	Weight (kg)
Barcode scanner, transport case, mini Welding Book		<b>790 156 003</b>	20.000
Barcode scanner, transport case, mini Welding Book, Swiss plug		<b>790 156 006</b>	20.000
Barcode scanner, transport case, mini Welding Book, 8m fusion cable		<b>790 156 010</b>	21.000



### Double clamp with universal link

- Recommended for the installation of fittings COOL-FIT and ELGEF Plus
- The clamping allows installation without tension and avoids movement during fusion and cooling time
- The centrally located adjustable universal link allows installation of electrofusion couplers, elbows and reducers
- Works above, below and alongside the joint
- Adaptor for use with Tee-pieces available (see accessories)

d (mm)	d1 (mm)	Code	Weight (kg)	Description	L (mm)	B (mm)	H (mm)
40	200	<b>799 301 490</b>	4.200	Scope of delivery: 2 x V-block, 2 x Straight bar, 1 x Universal link, Transport bag (600x380x250)	960	290	230
160	630	<b>799 301 496</b>	14.100	Scope of delivery: 2 x V-block, 2 x Straight bar, 1 x Universal link, Transport bag (780x780x580)	1300	670	550



### Quadruple clamp with universal link

- Recommended for the installation of fittings COOL-FIT and ELGEF Plus
- The clamping allows installation without tension and avoids movement during fusion and cooling time
- The centrally located adjustable universal link allows installation of electrofusion couplers, elbows and reducers
- Universal use; works above, below and alongside the joint
- Adaptor for use with Tee-pieces available (see accessories)

d (mm)	d1 (mm)	Code	Weight (kg)	Description	L (mm)	B (mm)	H (mm)
40	200	<b>799 301 489</b>	8.300	Scope of delivery: 4 x V-block, 2 x Straight bar, 1 x Universal link, Transport bag (600x380x250)	960	290	230
160	630	<b>799 301 495</b>	23.300	Scope of delivery: 4 x V-block, 2 x Straight bar, 1 x Universal link, Transport bag (780x780x580)	1300	670	550



### Tee adaptor

- Suitable for clamping tool (799301489 - 495)

d (mm)	d1 (mm)	Code	Weight (kg)	Description	L (mm)	B (mm)	H (mm)
40	200	<b>799 301 491</b>	0.610	Tee adaptor	600	50	40
160	630	<b>799 301 497</b>	3.500	Tee adaptor	1070	75	60



### V-block

- Suitable for clamping tool (799301489 - 495)

d (mm)	d1 (mm)	Code	Weight (kg)	Description	L (mm)	B (mm)	H (mm)
40	200	<b>799 301 492</b>	1.000	V-block complete	290	230	65
160	630	<b>799 301 498</b>	3.200	V-block complete	660	430	90



### Bar extension

- Suitable for clamping tool (799301489 - 495)

d (mm)	d1 (mm)	Code	Weight (kg)	Description	L (mm)	B (mm)	H (mm)
160	630	<b>799 301 499</b>	1.000	Bar extension	1000	40	40

# Worldwide at home

Our sales companies and representatives ensure local customer support in more than 100 countries.

[www.gfps.com](http://www.gfps.com)

## Argentina / Southern South America

Georg Fischer Central Plastics Sudamérica S.R.L.  
Buenos Aires / Argentina  
Phone +54 11 4512 02 90  
[gfccentral.ps.ar@georgfischer.com](mailto:gfccentral.ps.ar@georgfischer.com)  
[www.gfps.com/ar](http://www.gfps.com/ar)

## Australia

George Fischer Pty Ltd  
Riverwood NSW 2210  
Phone +61 (0) 2 9502 8000  
[australia.ps@georgfischer.com](mailto:australia.ps@georgfischer.com)  
[www.gfps.com/au](http://www.gfps.com/au)

## Austria

Georg Fischer Rohrleitungssysteme GmbH  
3130 Herzogenburg  
Phone +43 (0) 2782 856 43-0  
[austria.ps@georgfischer.com](mailto:austria.ps@georgfischer.com)  
[www.gfps.com/at](http://www.gfps.com/at)

## Belgium / Luxembourg

Georg Fischer NV/SA  
1600 Sint-Pieters-Leeuw / Belgium  
Phone +32 (0) 2 556 40 20  
Fax +32 (0) 2 524 34 26  
[be.ps@georgfischer.com](mailto:be.ps@georgfischer.com)  
[www.gfps.com/be](http://www.gfps.com/be)

## Brazil

Georg Fischer Sist. de Tub. Ltda.  
04571-020 São Paulo/SP  
Phone +55 (0) 11 5525 1311  
[br.ps@georgfischer.com](mailto:br.ps@georgfischer.com)  
[www.gfps.com/br](http://www.gfps.com/br)

## Canada

Georg Fischer Piping Systems Ltd  
Mississauga, ON L5T 2B2  
Phone +1 (905) 670 8005  
Fax +1 (905) 670 8513  
[ca.ps@georgfischer.com](mailto:ca.ps@georgfischer.com)  
[www.gfps.com/ca](http://www.gfps.com/ca)

## China

Georg Fischer Piping Systems Ltd  
Shanghai 201319  
Phone +86 21 3899 3899  
[china.ps@georgfischer.com](mailto:china.ps@georgfischer.com)  
[www.gfps.com/cn](http://www.gfps.com/cn)

## Denmark / Iceland

Georg Fischer A/S  
2630 Taastrup / Denmark  
Phone +45 (0) 70 22 19 75  
[info.dk.ps@georgfischer.com](mailto:info.dk.ps@georgfischer.com)  
[www.gfps.com/dk](http://www.gfps.com/dk)

## Finland

Georg Fischer AB  
01510 Vantaa  
Phone +358 (0) 9 586 58 25  
Fax +358 (0) 9 586 58 29  
[info.fi.ps@georgfischer.com](mailto:info.fi.ps@georgfischer.com)  
[www.gfps.com/fi](http://www.gfps.com/fi)

## France

Georg Fischer SAS  
95932 Roissy Charles de Gaulle Cedex  
Phone +33 (0) 1 41 84 68 84  
[fr.ps@georgfischer.com](mailto:fr.ps@georgfischer.com)  
[www.gfps.com/fr](http://www.gfps.com/fr)

## Germany

Georg Fischer GmbH  
73095 Albershausen  
Phone +49 (0) 7161 302 0  
[info.de.ps@georgfischer.com](mailto:info.de.ps@georgfischer.com)  
[www.gfps.com/de](http://www.gfps.com/de)

## India

Georg Fischer Piping Systems Pvt. Ltd  
400 083 Mumbai  
Phone +91 22 4007 2000  
Fax +91 22 4007 2020  
[branchoffice@georgfischer.com](mailto:branchoffice@georgfischer.com)  
[www.gfps.com/in](http://www.gfps.com/in)

## Indonesia

PT Georg Fischer Indonesia  
Karawang 41371, Jawa Barat  
Phone +62 267 432 044  
Fax +62 267 431 857  
[indonesia.ps@georgfischer.com](mailto:indonesia.ps@georgfischer.com)  
[www.gfps.com/id](http://www.gfps.com/id)

## Italy

Georg Fischer S.p.A.  
20063 Cernusco S/N (MI)  
Phone +39 02 921 861  
[it.ps@georgfischer.com](mailto:it.ps@georgfischer.com)  
[www.gfps.com/it](http://www.gfps.com/it)

## Japan

Georg Fischer Ltd  
530-0003 Osaka  
Phone +81 (0) 6 6341 2451  
[jp.ps@georgfischer.com](mailto:jp.ps@georgfischer.com)  
[www.gfps.com/jp](http://www.gfps.com/jp)

## Korea

Georg Fischer Korea Co. Ltd  
Unit 2501, U-Tower  
120 Heungdeok Jungang-ro  
(Yeongdeok-dong)  
Giheung-gu, Yongin-si, Gyeonggi-do  
Phone +82 31 8017 1450  
Fax +82 31 217 1454  
[kor.ps@georgfischer.com](mailto:kor.ps@georgfischer.com)  
[www.gfps.com/kr](http://www.gfps.com/kr)

## Malaysia

George Fischer (M) Sdn. Bhd.  
41200 Klang, Selangor Darul Ehsan  
Phone +60 (0) 3 3122 5585  
Fax +60 (0) 3 3122 5575  
[my.ps@georgfischer.com](mailto:my.ps@georgfischer.com)  
[www.gfps.com/my](http://www.gfps.com/my)

## Mexico / Northern Latin America

Georg Fischer S.A. de C.V.  
CP 66636 Apodaca, Nuevo Leon / Mexico  
Phone +52 (81) 1340 8586  
Fax +52 (81) 1522 8906  
[mx.ps@georgfischer.com](mailto:mx.ps@georgfischer.com)  
[www.gfps.com/mx](http://www.gfps.com/mx)

## Middle East

Georg Fischer Piping Systems (Switzerland) Ltd  
Dubai / United Arab Emirates  
Phone +971 4 289 49 60  
[gcc.ps@georgfischer.com](mailto:gcc.ps@georgfischer.com)  
[www.gfps.com/int](http://www.gfps.com/int)

## Netherlands

Georg Fischer N.V.  
8161 PA Epe  
Phone +31 (0) 578 678 222  
[nl.ps@georgfischer.com](mailto:nl.ps@georgfischer.com)  
[www.gfps.com/nl](http://www.gfps.com/nl)

## New Zealand

Georg Fischer Ltd  
5018 Upper Hutt  
Phone +04 527 9813  
Fax +04 527 9834  
[nz.ps@georgfischer.com](mailto:nz.ps@georgfischer.com)  
[www.gfps.com/nz](http://www.gfps.com/nz)

## Norway

Georg Fischer AS  
1351 Rud  
Phone +47 67 18 29 00  
[no.ps@georgfischer.com](mailto:no.ps@georgfischer.com)  
[www.gfps.com/no](http://www.gfps.com/no)

## Philippines

George Fischer Pte Ltd  
Representative Office  
1604 Pasig City  
Phone +632 571 2365  
Fax +632 571 2368  
[spp.ps@georgfischer.com](mailto:spp.ps@georgfischer.com)  
[www.gfps.com/sg](http://www.gfps.com/sg)

## Poland

Georg Fischer Sp. z o.o.  
05-090 Sekocin Nowy  
Phone +48 (0) 22 31 31 0 50  
[poland.ps@georgfischer.com](mailto:poland.ps@georgfischer.com)  
[www.gfps.com/pl](http://www.gfps.com/pl)

## Romania

Georg Fischer Piping Systems (Switzerland) Ltd  
020257 Bucharest - Sector 2  
Phone +40 (0) 21 230 53 80  
[ro.ps@georgfischer.com](mailto:ro.ps@georgfischer.com)  
[www.gfps.com/int](http://www.gfps.com/int)

## Russia

Georg Fischer Piping Systems (Switzerland) Ltd  
Moscow 125040  
Phone +7 495 748 11 44  
[ru.ps@georgfischer.com](mailto:ru.ps@georgfischer.com)  
[www.gfps.com/ru](http://www.gfps.com/ru)

## Singapore

Georg Fischer Pte Ltd  
528 872 Singapore  
Phone +65 6747 0611  
Fax +65 6747 0577  
[sgp.ps@georgfischer.com](mailto:sgp.ps@georgfischer.com)  
[www.gfps.com/sg](http://www.gfps.com/sg)

## Spain / Portugal

Georg Fischer S.A.  
28046 Madrid / Spain  
Phone +34 (0) 91 781 98 90  
[es.ps@georgfischer.com](mailto:es.ps@georgfischer.com)  
[www.gfps.com/es](http://www.gfps.com/es)

## Sweden

Georg Fischer AB  
117 43 Stockholm  
Phone +46 (0) 8 506 775 00  
[info.se.ps@georgfischer.com](mailto:info.se.ps@georgfischer.com)  
[www.gfps.com/se](http://www.gfps.com/se)

## Switzerland

Georg Fischer Rohrleitungssysteme (Schweiz) AG  
8201 Schaffhausen  
Phone +41 (0) 52 631 3026  
[ch.ps@georgfischer.com](mailto:ch.ps@georgfischer.com)  
[www.gfps.com/ch](http://www.gfps.com/ch)

## Taiwan

Georg Fischer Co. Ltd  
San Chung Dist., New Taipei City  
Phone +886 2 8512 2822  
Fax +886 2 8512 2823  
[www.gfps.com/tw](http://www.gfps.com/tw)

## United Kingdom / Ireland

Georg Fischer Sales Limited  
Coventry, CV2 2ST / United Kingdom  
Phone +44 (0) 2476 535 535  
[uk.ps@georgfischer.com](mailto:uk.ps@georgfischer.com)  
[www.gfps.com/uk](http://www.gfps.com/uk)

## USA / Caribbean

Georg Fischer LLC  
92618 Irvine, CA / USA  
Phone +1 714 731 8800  
Fax +1 714 731 6201  
[us.ps@georgfischer.com](mailto:us.ps@georgfischer.com)  
[www.gfps.com/us](http://www.gfps.com/us)

## Vietnam

Georg Fischer Pte Ltd  
Representative Office  
Ho Chi Minh City  
Phone +84 28 3948 4000  
Fax +84 28 3948 4010  
[sgp.ps@georgfischer.com](mailto:sgp.ps@georgfischer.com)  
[www.gfps.com/vn](http://www.gfps.com/vn)

## International

Georg Fischer Piping Systems (Switzerland) Ltd  
8201 Schaffhausen / Switzerland  
Phone +41 (0) 52 631 3003  
Fax +41 (0) 52 631 2893  
[info.export@georgfischer.com](mailto:info.export@georgfischer.com)  
[www.gfps.com/int](http://www.gfps.com/int)

The information and technical data (altogether "Data") herein are not binding, unless explicitly confirmed in writing. The Data neither constitutes any expressed, implied or warranted characteristics, nor guaranteed properties or a guaranteed durability. All Data is subject to modification. The General Terms and Conditions of Sale of Georg Fischer Piping Systems apply.